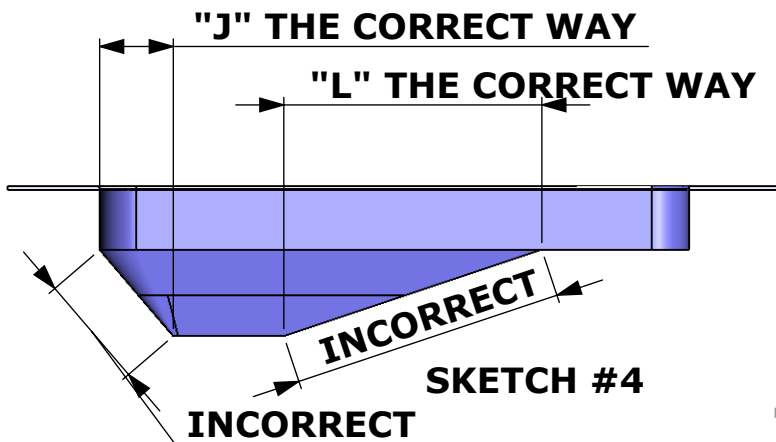
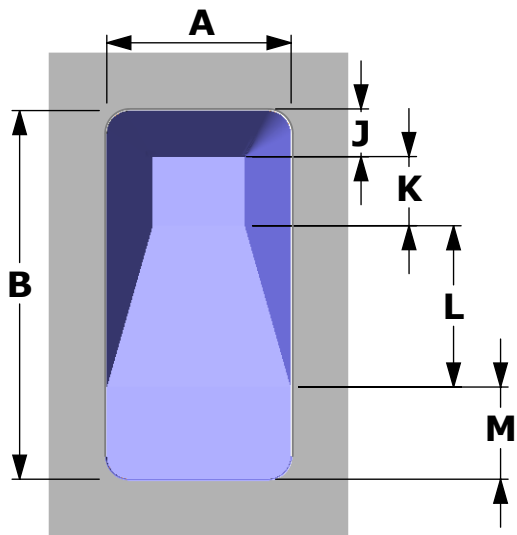
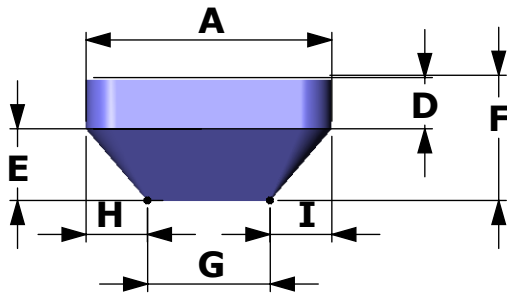
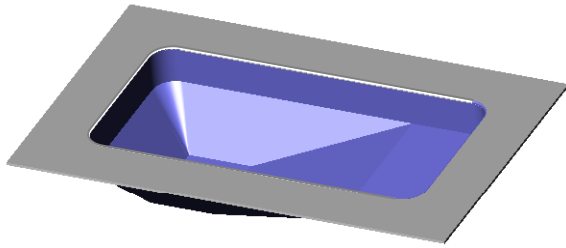


MEASURING A LINER



SKETCH #4

- You will need :
1. Measuring Tape (at least 50')
 2. Chalk
 3. Level
 4. Order form

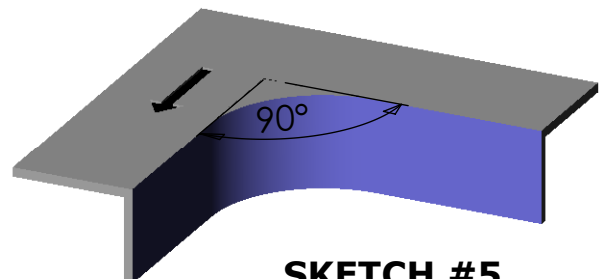
1. Start by measuring the overall Length(A) and Width(B)
 2. Measure the shallow end (M)
 3. Measure the slope(L)(See Sketch #4).
 4. Measure the hopper bottom (K).
 5. Measure the back slope(J).
 6. Measure the hopper width(G).
 7. Measure the hopper slopes(H&I).
- If the pool has water you can measure the hopper using a level and telepole, see hopper page. ALL SLOPES ARE MEASURED HORIZONTALLY /DO NOT MEASURE DOWN THE SLOPE.

Remember G,H and I have to equal A.
J,K,L,and M have to equal B.

This is a guide for basic pool shapes. For Free Form shapes YOU WILL NEED A POINT TO POINT ORDER FORM.

CORNERS

1. Radius corners can be determined by finding the square corner and measuring to the end of the radius. See Sketch #5
2. Grecian corners are measured along the diagonal of the pool corner.
3. Ovals do not have corners the radius is half of the Width. (18' equals a 9' radius).



SKETCH #5