



www.inter-fab.com

X-stream Slide



Assembly and Installation Instructions



Assembly/Installation Instructions for X-stream Slide

The following Assembly and Installation instructions are listed in the correct sequence for a straightforward assembly of the X-stream Slide. Please read and understand all instructions before beginning installation. A two-person crew is recommended for best results, as the assembled slide is very long, and unwieldy for one person to handle. The Footprint Template is for reference only, and it is strongly recommended that the slide not be permanently anchored to deck until the proper time in the assembly order.

Choose the Water Stub-up Location and Footprint Template for the the applicable X-stream slide from the following figures.

Fig. A-1: Water Stub-up Location, Left Hand Slide

Fig. A-2: X-stream Footprint, Left Hand Slide

**Fig. A-3 Water Stub-up Location, Right Hand Slide,
and X-stream Footprint, Right Hand Slide**

For List of Parts, and Required Tools, See Fig. B, and Schedule One

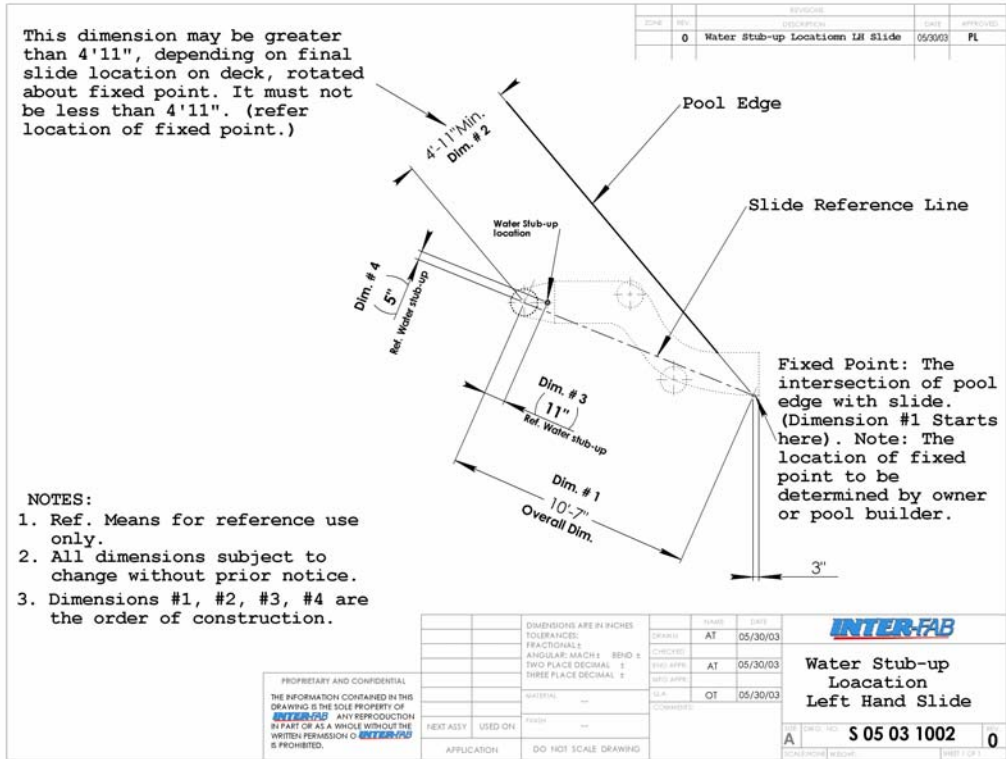
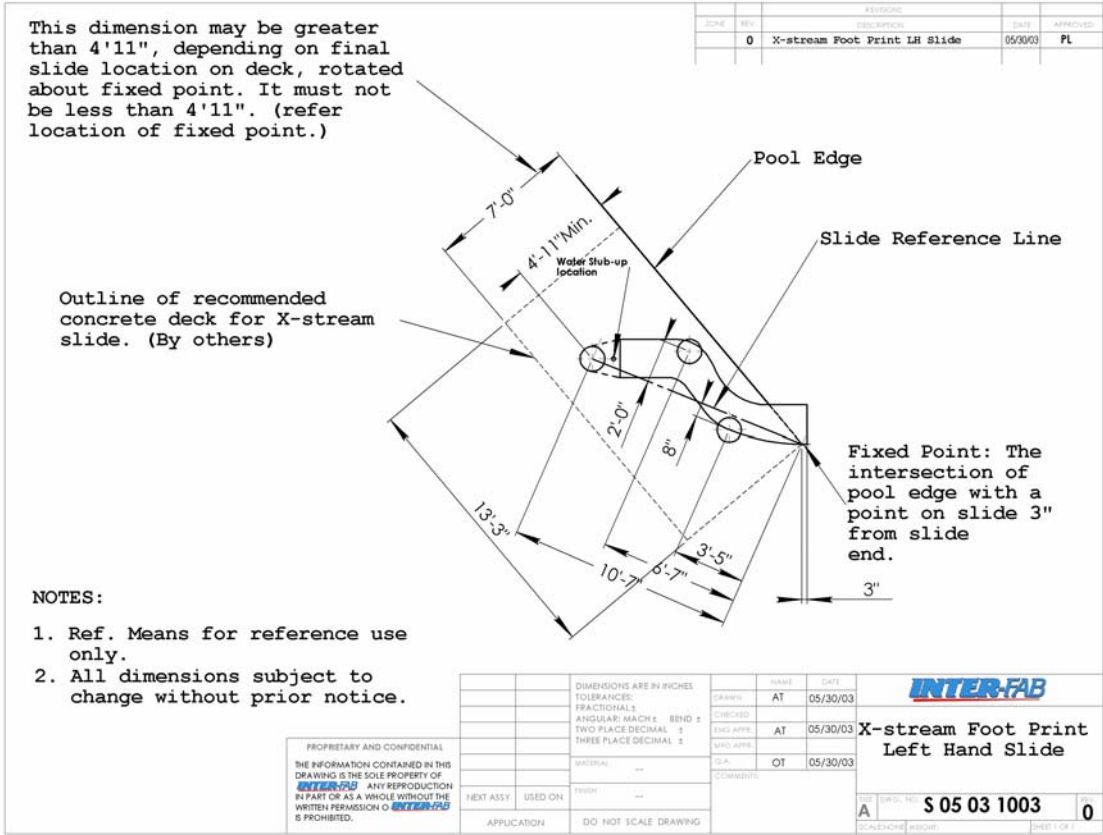


Fig. A-1



A-2

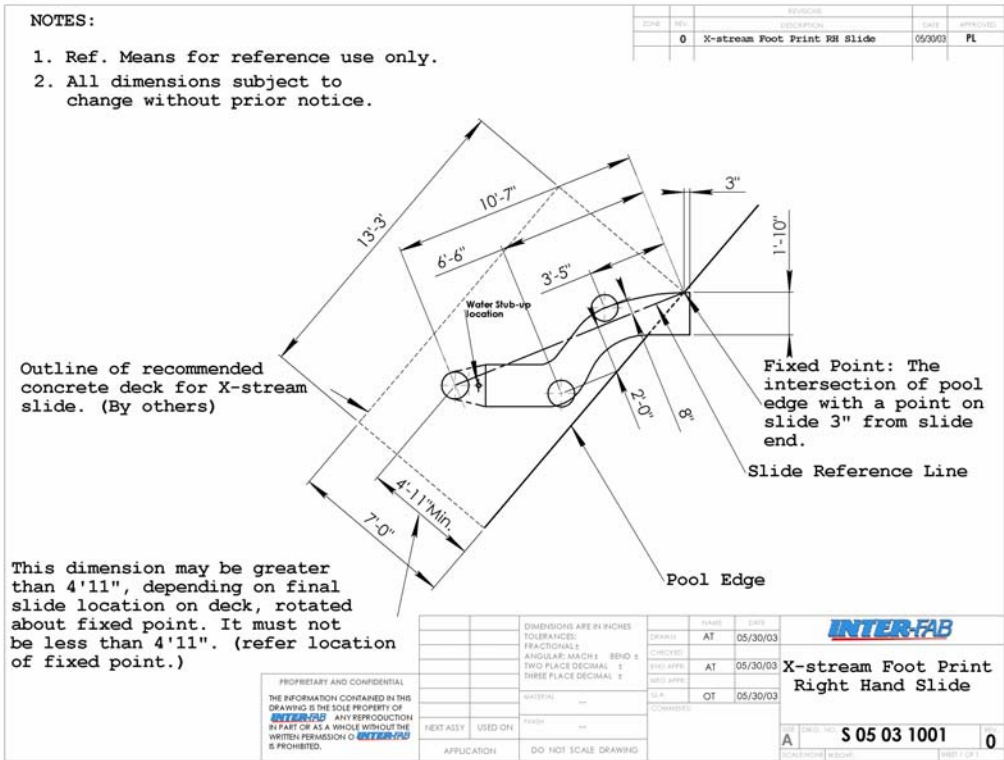
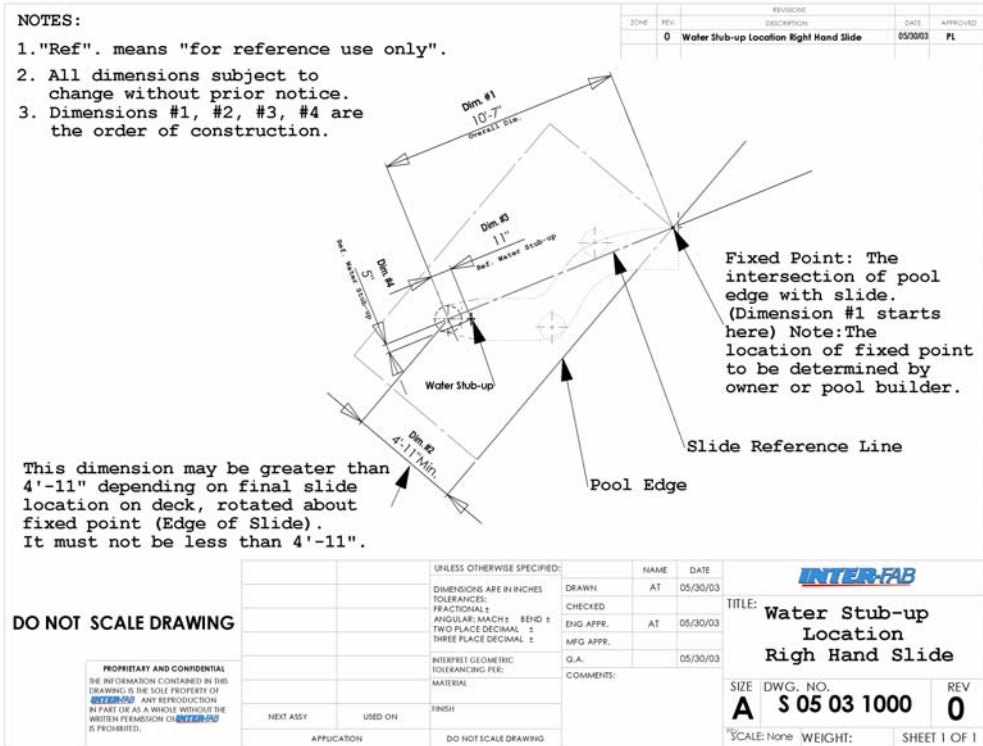


Fig A-3

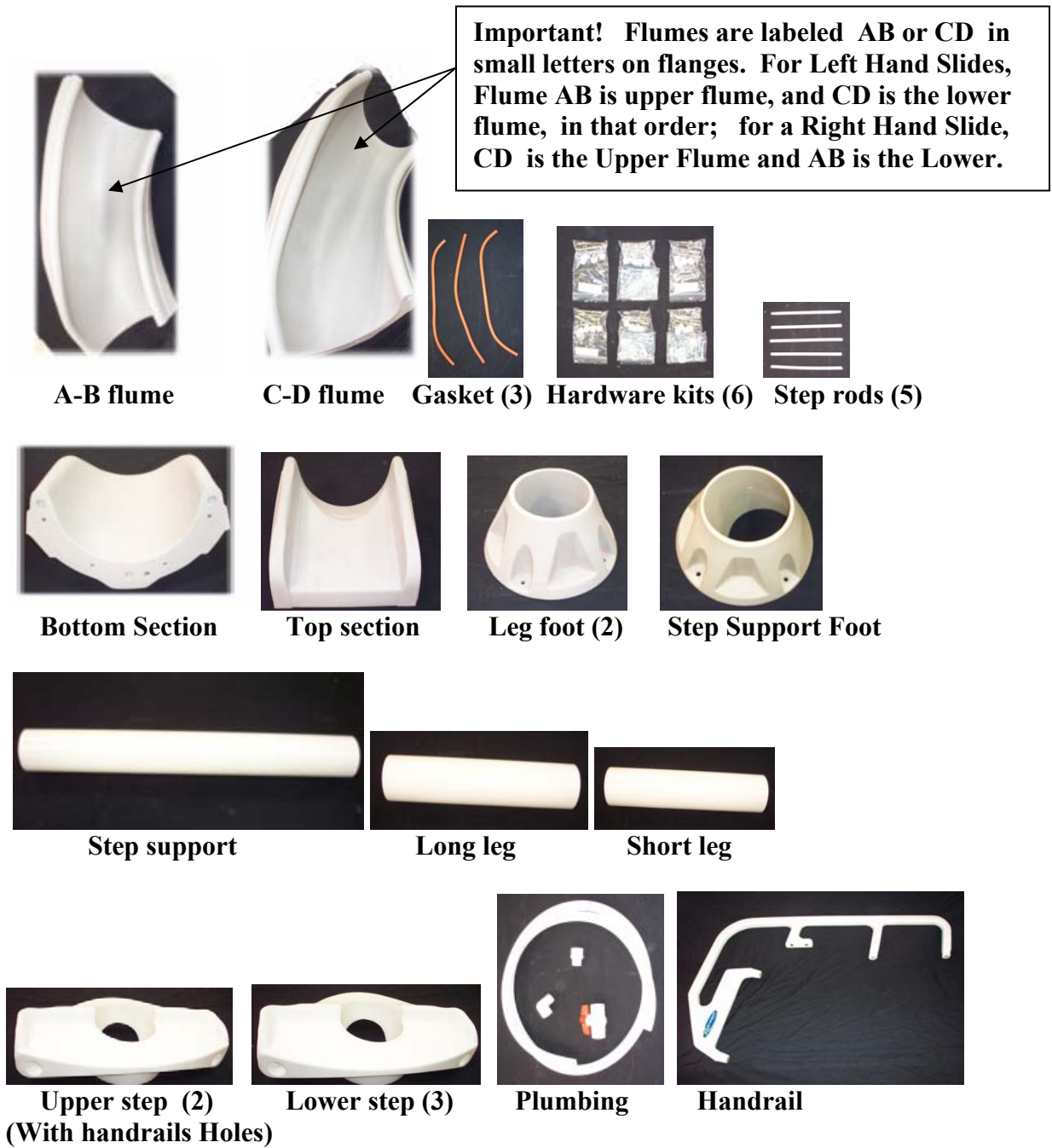


Fig. B: Parts Required

List of Tools

Tools required for assembly and installation of X-stream slide

1. Hammer
2. 3/8" drive ratchet
3. 3/8" x 6" ratchet extension
4. 1/2" socket
5. 9/16" socket
6. 9/16" box end ratchet wrench
7. Drill with 3/8" masonry bit
8. Tape measure
9. PVC Pipe Cutter

Schedule One Required Tools

ASSEMBLY AND INSTALLATION INSTRUCTIONS

Step One: *Preparation of Ladder Step Support System Sub-Assembly*

- Note: Steps must be installed one at a time, starting with bottom step, and continuing upward until all steps are installed; note that only the top two steps have holes for handrail attachment.
- Using the longest PVC pipe, push the lower three steps onto pipe from the bottom end, so that they all clear the bottom dowel holes. Bottom end of PVC pipe is the end with the slanted cut. Note: Front of steps (treads) are oriented so that they are on opposite side of the two oversized holes in PVC pipe for flex hose.

Insert the bottom step supporting dowel thru holes provided, so that it protrudes equally on each side of the 6" PVC pipe. Use a hammer to tap it into position. Now slide the first step down until it snaps onto dowel; this may take some effort or extra force. (See Fig. 2).



Fig. 2: Back side of Step (Front Object is a 12" rule)

- Next, install the second step supporting dowel thru holes provided, so that it protrudes equally on each side of 6" PVC pipe; then slide the second step down and snap it onto this dowel as before. Do the same for the third step.
- The two steps with holes for handrail may be pushed in from the top of the PVC pipe and snapped onto dowels inserted as before. (Fig 3 shows all five steps installed in position.)

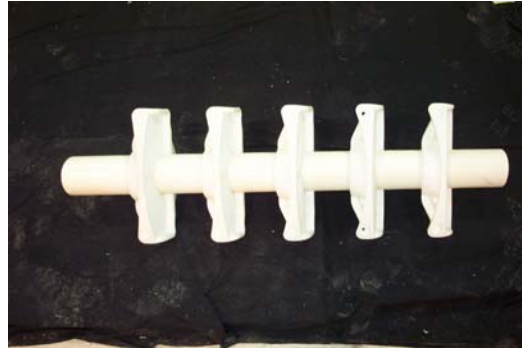


Fig. 3: Step Support Assembly

- Install water hose inside 6" PVC pipe Step Support Assembly, inserting first at oversized hole provided at bottom, then threading through and inside the PVC pipe, behind the step dowels until the upper oversized hole is reached. Thread and pull hose through the top oversized hole. Make sure equal amounts of hose protrude at both top and bottom of PVC pipe step support. This activity will take two persons, one to push, and one to pull, gently, the flexible hose (Fig. 4)
- Install foot receiver on 6" PVC pipe Step Support Assembly, using 3/8" x 2" bolts at two locations, and 2-1/2" bolt for the location directly underneath the Step Support Assembly Column. Push bolt thru 3/8" lock washer, thru 3/8" flat washer, thru pre-drilled holes in PVC and Foot Receiver, thru 3/8" flat washer, and thru 3/8" nylon locking nut. This foot receiver contains only three holes for complete attachment. (Fig. 4) Use Hardware Set #1. Tighten all connections.



Fig. 4 (Note: The short item at the bottom is 12" rule)

- Connect Step Support Assembly to Top Section.** This assembly may be done with Top Section on ground, on its side. Insert 6" PVC Step Support Assembly into receiver in Top Section. Using 3/8"x2" bolts provided in Hardware Set #3, push bolt thru 3/8" lock washer, thru 3/8" flat washer, thru pre-drilled hole in PVC pipe, and into pre-inserted nut in the receiver in Top Section. Make sure orientation of Top Section is such that Handrail will connect to both Top Section and Step Section. Tighten connections slightly.

Connect Handrail to the Top Section of the slide and to steps before attaching the Top Section to the Upper Flume. Note: Handrails must be installed with X-stream label out. Use the 5/16" bolts x required length (see Schedule Two) and washers from Hardware set #5 to connect the Top Section to insert nuts in the Handrail. A ratchet extension will be required for bolts through flange of Top Section. Push bolt thru Lock washer, thru flat washers, thru hole provided in Top Section or Steps, into pre-inserted nuts in handrail, and tighten all these connections. The Ladder Step Support Sub Assembly is now complete. (Fig. 5.)

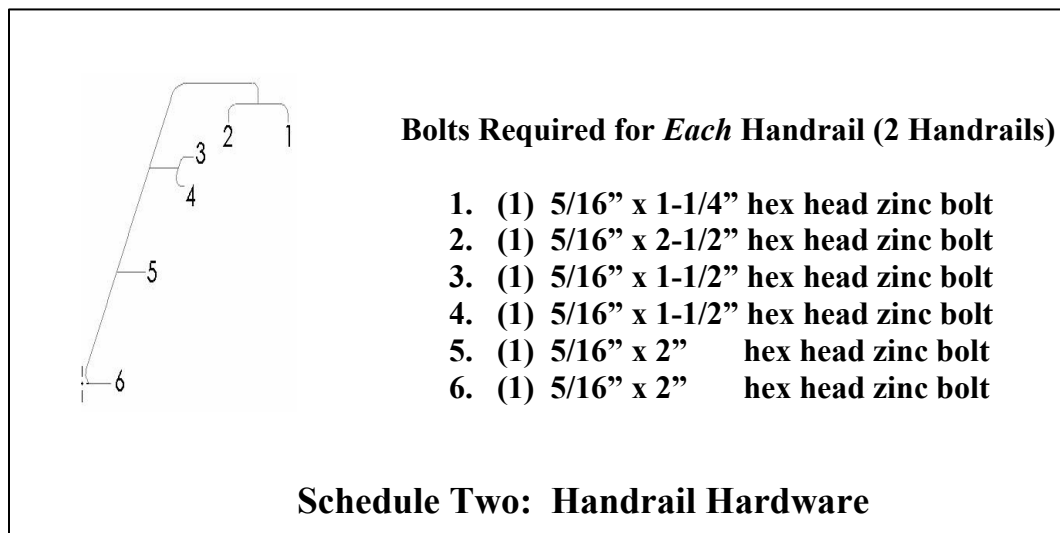




Fig. 5.: Ladder Step Support Sub-Assembly

Step Two: *Slide Legs*

- **Install remaining foot receivers on the long and short legs, using 3/8" x 2" bolts in four locations. Push PVC pipe all the way to the bottom of the foot receiver. Push 3/8"x 2" bolt thru 3/8" lockwasher, thru 3/8" flat washer, thru pre-drilled holes provided in PVC pipe and foot receiver, through 3/8" flat washer, and thru 3/8" nylon locking nut. Note: Do not confuse the four Foot receiver holes in PVC pipe with the four Flume receiver holes at top. (Foot receiver holes can be seen through 6" PVC pipe after pipe is pushed all the way down to bottom of Foot receiver). Tighten all connections. (Fig. 6, 7) Use Hardware Set #1**



**Figs. 6, 7
Short Leg and Long Leg with Foot Attached**

Step Three: Main Slide Assembly

(Note: This section may be assembled on the ground, with parts upside down or on their sides).

- Connect Lower Flume Section to Upper flume Section, using 3/8" x 2-3/4" thru bolts in four locations, ensuring a flexible gasket is in place in the recess provided between the flanges. (Fig. 8) Use Hardware Set #2. Push 3/8" bolt thru lock washer, thru flat washer, thru pre-drilled holes in flanges of both flumes, thru flat washer, thru 3/8" nuts. **IMPORTANT NOTE:** *There is enough tolerance in the flange connections to provide a smooth and even transition between flumes on the sliding surface of the slide; usually, it will take the efforts of two persons to ensure this: one to pull or push up or down on either of the two flumes at the flange connection, and one to tighten the bolts when the top surfaces are even. It is recommended that the two center bolts be tightened first when this is done, and that the two outer connections be tightened when the sides are aligned, in a similar manner to the center ones. Tighten all connections.* NOTE: Make sure AB/CD or CD/AB orientation is correct for Left or Right Hand slide as required.



Fig. 8

Connect exit section to lower flume, using 3/8" x 2-3/4" thru bolts in four locations ensuring a flexible gasket is installed in recess provided for that purpose. Push 3/8" bolt thru lock washer, thru flat washer, thru pre-drilled holes provided in both flanges, thru flat washers, thru 3/8" nut (Fig. 9). **IMPORTANT NOTE** above applies here also! Use Hardware Set #2. Tighten all connections.



Fig. 9

Step Four: *Erection of Assembled Slide*

- **Install loosely, legs to flumes as required: long leg to upper flume, short leg to lower flume, using 3/8" X 2" bolts from Hardware Set #3. Push bolt thru lock washer, thru flat washer, thru pre-drilled hole provided in PVC pipe, into pre-inserted nuts in flume leg receiver. Do not tighten completely at this time. (Fig. 10) Use Hardware Set #3.**



Fig. 10

- **Turn slide assembly upright, resting it momentarily on the two legs. Now connect the Ladder Step Support Sub Assembly to the Upper Flume by bolting to the Top Section with hardware in Hardware Set #2, ensuring a flexible gasket is installed in recess provided in the flange for that purpose. Push 3/8" x 1-3/4" bolt thru lock washer, thru flat washer, thru pre-drilled hole provided in Upper Flume, into pre-inserted nut in Top Section. (Fig. 11). Tighten all connections when there is a smooth top surface at the connection (see IMPORTANT NOTE in step three.)**



**Flexible Gasket
required between
all flanges.**

Fig. 11

When long and short legs are completely plumb (ensure each leg is vertical by checking each leg at two points 90 deg. from each other), tighten *all* connections. Note: Slide Step Support System is designed for 16 deg. slope which must be installed correctly for proper functioning of slide. (Fig. 12)

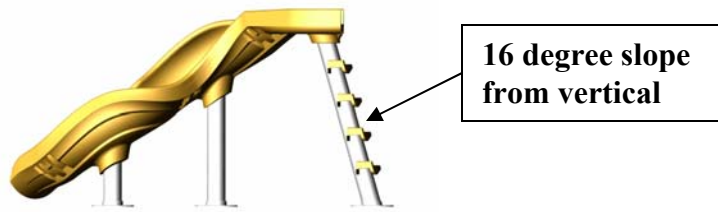


Fig. 12

Step Five: *Anchoring to Deck*

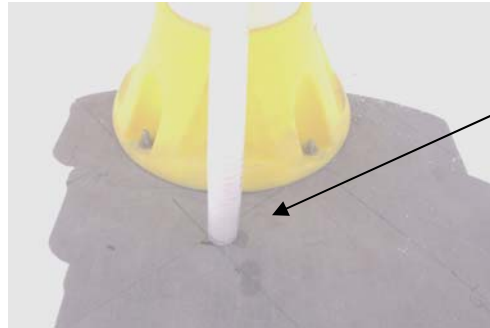
- Position all foot receivers on deck in the correct location, checking to insure the legs are vertical, then carefully mark the locations of all anchor bolts. If proper care is exercised, drilling of leg anchor bolt holes may be done with leg foot receivers in position; in this case, mark the location of holes for the slanted Step Support anchor bolts before moving slide aside (holes may not be drilled with this piece in position due to interference with the steps).
- Move the slide aside to drill the slanted Step Support anchor bolt holes.
- Install Anchor Bolts at correct locations. Anchor bolt thread must protrude 1-1/2 inches above the deck. Use Hardware Set #4.
- Install foot receivers onto deck on anchor bolts previously installed. (Fig. 13)
- Tighten all connections.



Fig. 13

Step Six: Connect Water Supply System

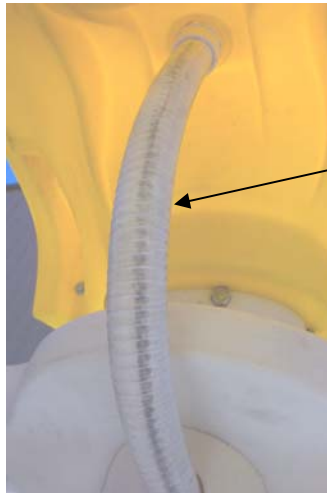
- Connect bottom hose to water system as required, using proper connectors (by others) and in-line valve (furnished) as required. (Fig. 14)



Owner or Installer to provide Stub-Up or water supply as req'd.

Fig. 14

- Install top hose section, cutting piping to fit as required, and connecting to male adaptor which attaches to Top Section. Use PVC primer and glue (not included) as required. (Fig. 15) Use Hardware Set #6.



Note: In-line valve may also be installed in this location, as there is ample space on hose.

Fig. 15

Step Seven: Finish

- Install all protective caps at exposed bolts.
- Turn water supply on and check water flow.
- Clean Slide and dispose of all debris caused by the installation.

Note: It is recommended that after several days' use, all visible bolted connections be re-tightened as needed.

