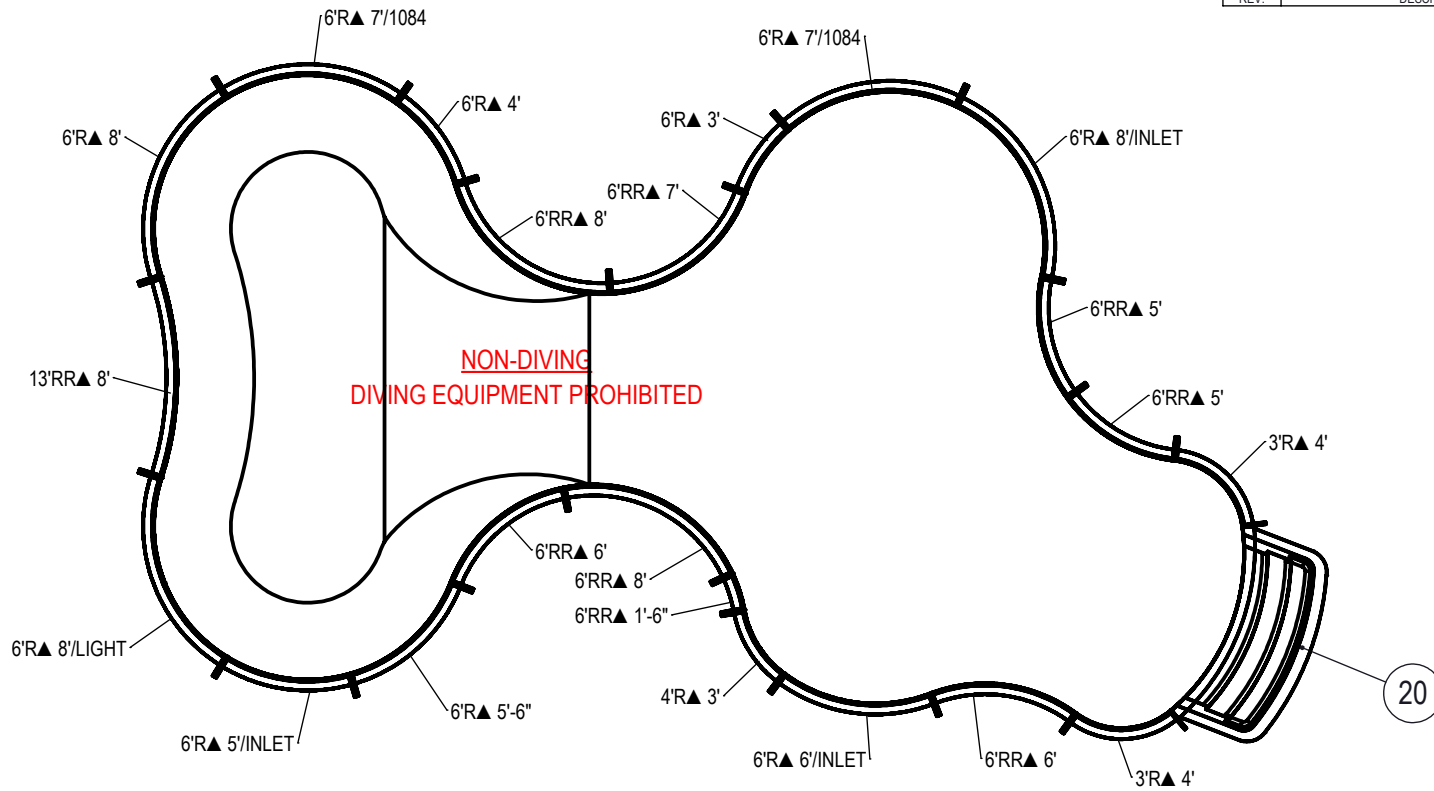


REVISION HISTORY				
REV.	DESCRIPTION	DATE	ECO	BY



NOTES:

- THESE ARE FINISHED DIMENSIONS READY FOR THE LINER.
- DIMENSIONS ARE FROM INSIDE POOL PANELS.
- ROPE AND FLOAT ASSEMBLY SHOULD BE INSTALLED IN ACCORDANCE WITH CURRENT ANSI/ASPS/ICC REGULATIONS
- HYDRA LINER TRACK FOR STEPS IS INSTALLED WITH THE BARB FACING THE RISER WALL ON THE STEP.

EXCAVATION NOTES:

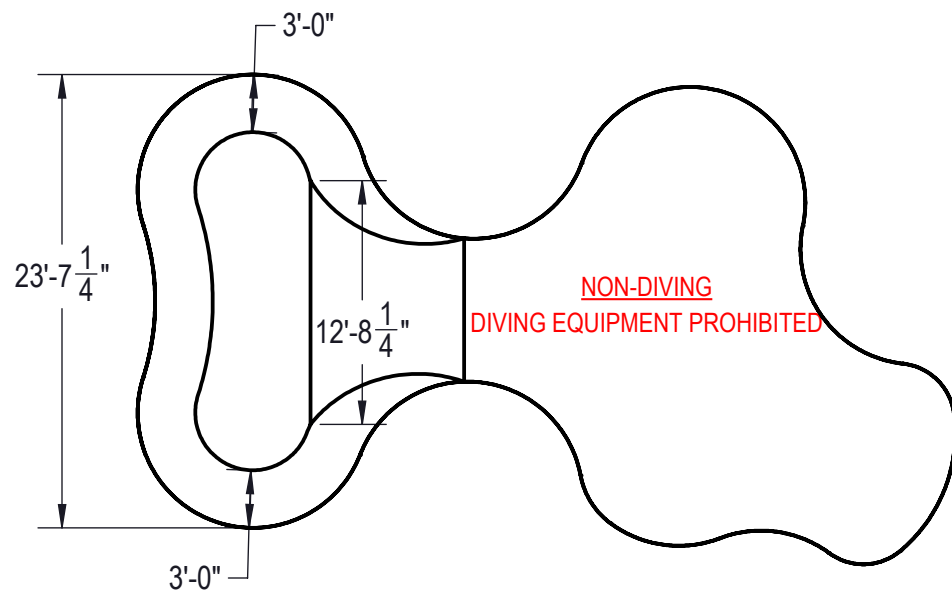
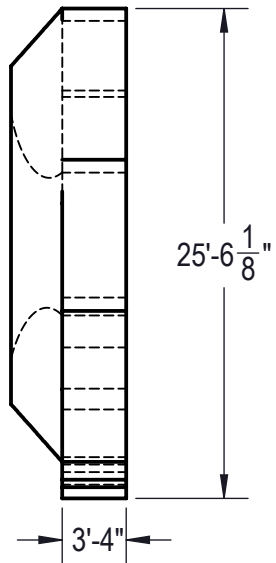
- ROUGH EXCAVATION SHOULD BE 2" DEEPER IN EACH INSTANCE.
- SOIL TO HAVE MINIMUM BEARING CAPACITY OF 1500 PSF.
- LOCATE TOP OF POOL AT LEAST 6" ABOVE THE SURROUNDING LAND ELEVATION.
- SEE "OVER DIG DETAIL" FOR EXCAVATION AROUND POOL.
- FILL VOIDS UNDER BASE OF PANELS AND TAMP WELL.
- BACK FILL WITH NON-EXPANSIVE MATERIAL.
- FOLLOW ALL CURRENT ANSI / APSP / ICC GUIDELINES FOR RESIDENTIAL POOLS

IMPORTANT NOTES:

THIS DOCUMENT IS FOR ILLUSTRATIVE PURPOSES ONLY. THE DEALER OR CONTRACTOR WHO SELLS OR INSTALLS YOUR POOL IS AN INDEPENDENT CONTRACTOR AND IS NOT AN AGENT OF THE MANUFACTURER. THE CONSTRUCTION METHODS ILLUSTRATED HERE ARE SUGGESTIONS AND APPLY ONLY TO NORMAL GROUND CONDITIONS. THERE MAY BE ADDITIONAL PRECAUTIONS AND/OR METHODS OF CONSTRUCTION. PROPER INSTALLATION IS THE RESPONSIBILITY OF THE DEALER/BUILDER/CONTRACTOR.

ITEM	FILE NAME	DESCRIPTION	CUSTOMER DRAWING #	VENDOR PART #	QTY.
1	BOLT, PACK	BOLT, FLANGE, 3/8-16 X 1", PACK (50)	HPS1916	HPS1916	6
2	SBRACE	BRACE, FOLD OVER WITH TURNBUCKLE, STEEL, HPSFOB	HPSFOB	HPSFOB	23
3	PANEL, RR	PANEL, 13' REVERSE RADIUS, 8' LONG, 600 SERIES	HPSD13RR8	00001238	1
4	PANEL, RADIUS	PANEL, 3' RADIUS, 4' LONG, 600 SERIES	HPSCR5	00007783	2
5	PANEL, RADIUS	PANEL, 4' RADIUS, 3' LONG, 600 SERIES	HPS4R3	00000487	1
6	PANEL, RADIUS	PANEL, 6' RADIUS, 3' LONG, 600 SERIES	HPSD6R3	00001409	1
7	PANEL, RADIUS	PANEL, 6' RADIUS, 4' LONG, 600 SERIES	HPSD6R4	00001180	1
8	PANEL, RADIUS	PANEL, 6' RADIUS, 5' LONG, INLET, 600 SERIES	HPS6R6	00006489	1
9	PANEL, RADIUS	PANEL, 6' RADIUS, 5'-6" LONG, 600 SERIES	HPSD6R56	00001127	1
10	PANEL, RADIUS	PANEL, 6' RADIUS, 6' LONG, INLET, 600 SERIES	HPSD6R6I	00000242	1
11	PANEL, RADIUS	PANEL, 6' RADIUS, 7' LONG, 1084, 600 SERIES	HSPCR8	00009724	2
12	PANEL, RADIUS	PANEL, 6' RADIUS, 8' LONG, 600 SERIES	HPSD6R8	00000301	1
13	PANEL, RADIUS	PANEL, 6' RADIUS, 8' LONG, INLET, 600 SERIES	HPS6R8I	00000752	1
14	PANEL, RADIUS	PANEL, 6' RADIUS, 8' LONG, LIGHT, 600 SERIES	HPSD6R8L	00000302	1
15	PANEL, RR	PANEL, 6' REVERSE RADIUS, 1'-6" LONG, 600 SERIES	HPSCR22	00007784	1
16	PANEL, RR	PANEL, 6' REVERSE RADIUS, 5' LONG, 600 SERIES	HPS6RR5	00000131	2
17	PANEL, RR	PANEL, 6' REVERSE RADIUS, 6' LONG, 600 SERIES	HPSD6RR6	00002209	2
18	PANEL, RR	PANEL, 6' REVERSE RADIUS, 7' LONG, 600 SERIES	HPSD6RR7	00000484	1
19	PANEL, RR	PANEL, 6' REVERSE RADIUS, 8' LONG, 600 SERIES	HPSD6RR8	00000327	2
20	HS106N	STEP, 8' RADIUS, 3 TREAD	HS106N	HS106N	1

ENGINEERING DRAWING NUMBER: 00017439	WEIGHT:	UNLESS OTHERWISE SPECIFIED DIMENSIONS ARE IN INCHES TOLERANCES DECIMALS: X ± .1 XX ± .01 XXX ± .001 XXXX ± .0005 ANGULAR: X ± 0.5 THIRD ANGLE PROJECTION	DESIGNED BY:	CREATION DATE:	HYDRA POOLS
	lbs		BUMPHREY	7/11/2013	
	VOLUME:		DETAILED BY:	DETAILED DATE:	
	Inch ³		BUMPHREY	1/30/2018	
COLOR:	LAST REVISED BY:	LAST REVISED DATE:	TITLE: LAYOUT, 23'-8" X 42'-7", DUBAI, 6' DEEP, HS106N, LIGHT, 2-1084, 3-INLET, 600 SERIES		
NA	bumphrey	1/30/2018			
HEAT TREAT:	MATERIAL:				
NA					
FINISH:			PART NUMBER:		
NA			00017439		
TEXTURE:			SCALE:	SHEET:	SIZE:
NA			1:256	1 OF 4	A



NON-DIVING
DIVING EQUIPMENT PROHIBITED

Area: 685.83ft ^2
Perimeter: 134.99ft
Volume = 20858 US gallons

NOTES:

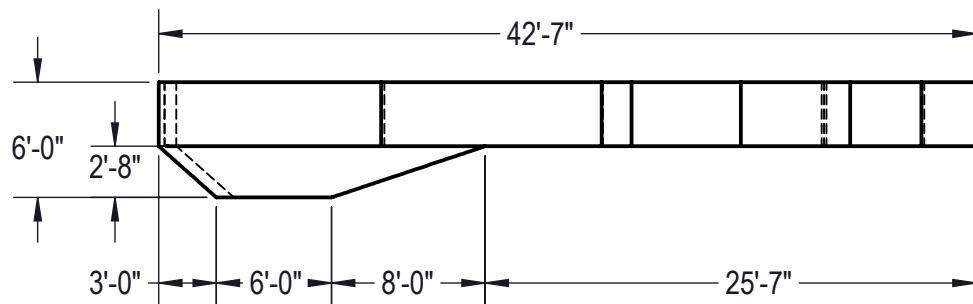
1. THESE ARE FINISHED DIMENSIONS READY FOR THE LINER.
2. DIMENSIONS ARE FROM INSIDE POOL PANELS.
3. ROPE AND FLOAT ASSEMBLY SHOULD BE INSTALLED IN ACCORDANCE WITH CURRENT ANSI/ASPS/ICC REGULATIONS
4. HYDRA LINER TRACK FOR STEPS IS INSTALLED WITH THE BARB FACING THE RISER WALL ON THE STEP.

EXCAVATION NOTES:

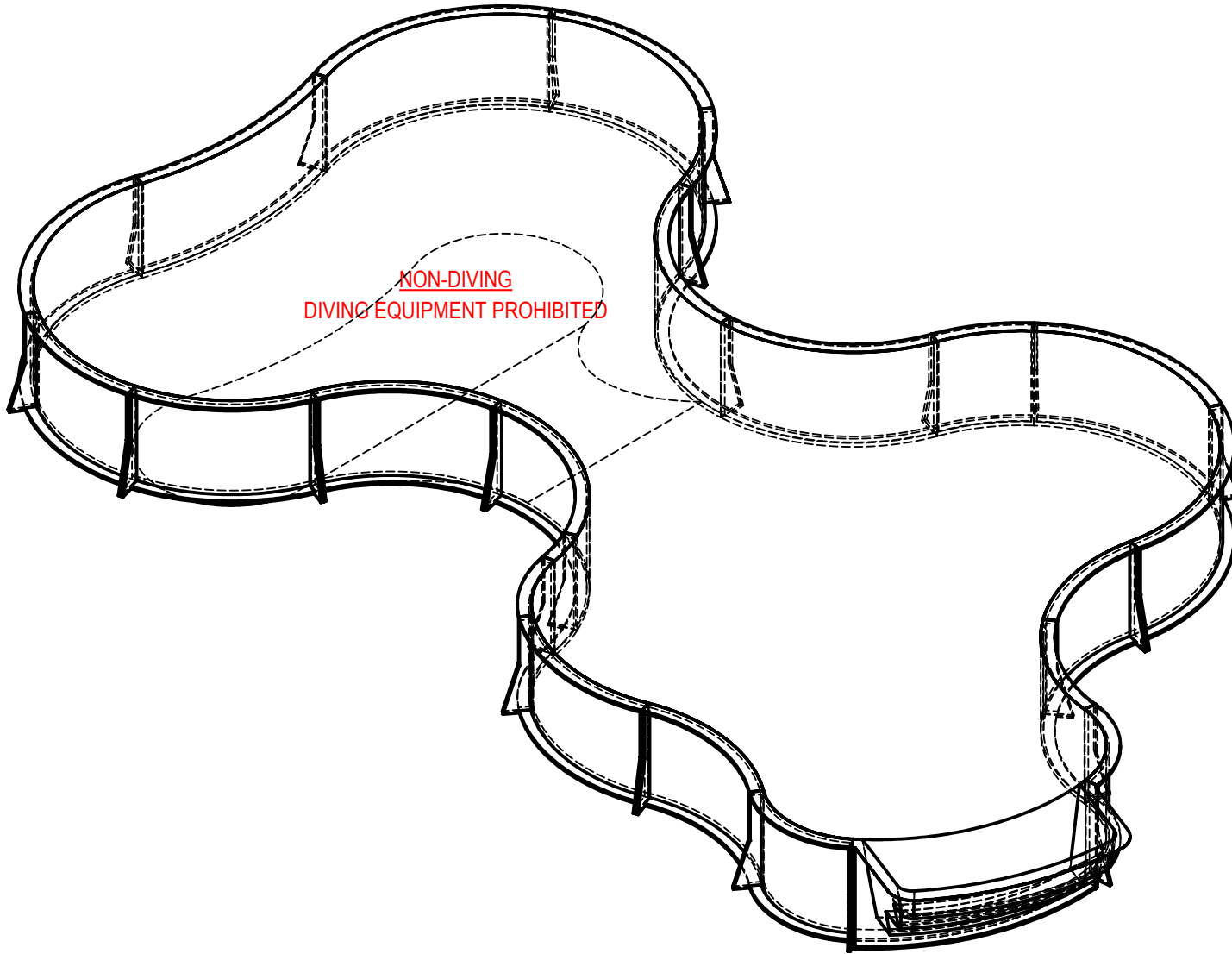
5. ROUGH EXCAVATION SHOULD BE 2" DEEPER IN EACH INSTANCE.
6. SOIL TO HAVE MINIMUM BEARING CAPACITY OF 1500 PSF.
7. LOCATE TOP OF POOL AT LEAST 6" ABOVE THE SURROUNDING LAND ELEVATION.
8. SEE "OVER DIG DETAIL" FOR EXCAVATION AROUND POOL.
9. FILL VOIDS UNDER BASE OF PANELS AND TAMP WELL.
10. BACK FILL WITH NON-EXPANSIVE MATERIAL.
11. FOLLOW ALL CURRENT ANSI / APSP / ICC GUIDELINES FOR RESIDENTIAL POOLS

IMPORTANT NOTES:


THIS DOCUMENT IS FOR ILLUSTRATIVE PURPOSES ONLY. THE DEALER OR CONTRACTOR WHO SELLS OR INSTALLS YOUR POOL IS AN INDEPENDENT CONTRACTOR AND IS NOT AN AGENT OF THE MANUFACTURER. THE CONSTRUCTION METHODS ILLUSTRATED HERE ARE SUGGESTIONS AND APPLY ONLY TO NORMAL GROUND CONDITIONS. THERE MAY BE ADDITIONAL PRECAUTIONS AND/OR METHODS OF CONSTRUCTION. PROPER INSTALLATION IS THE RESPONSIBILITY OF THE DEALER/BUILDER/CONTRACTOR.

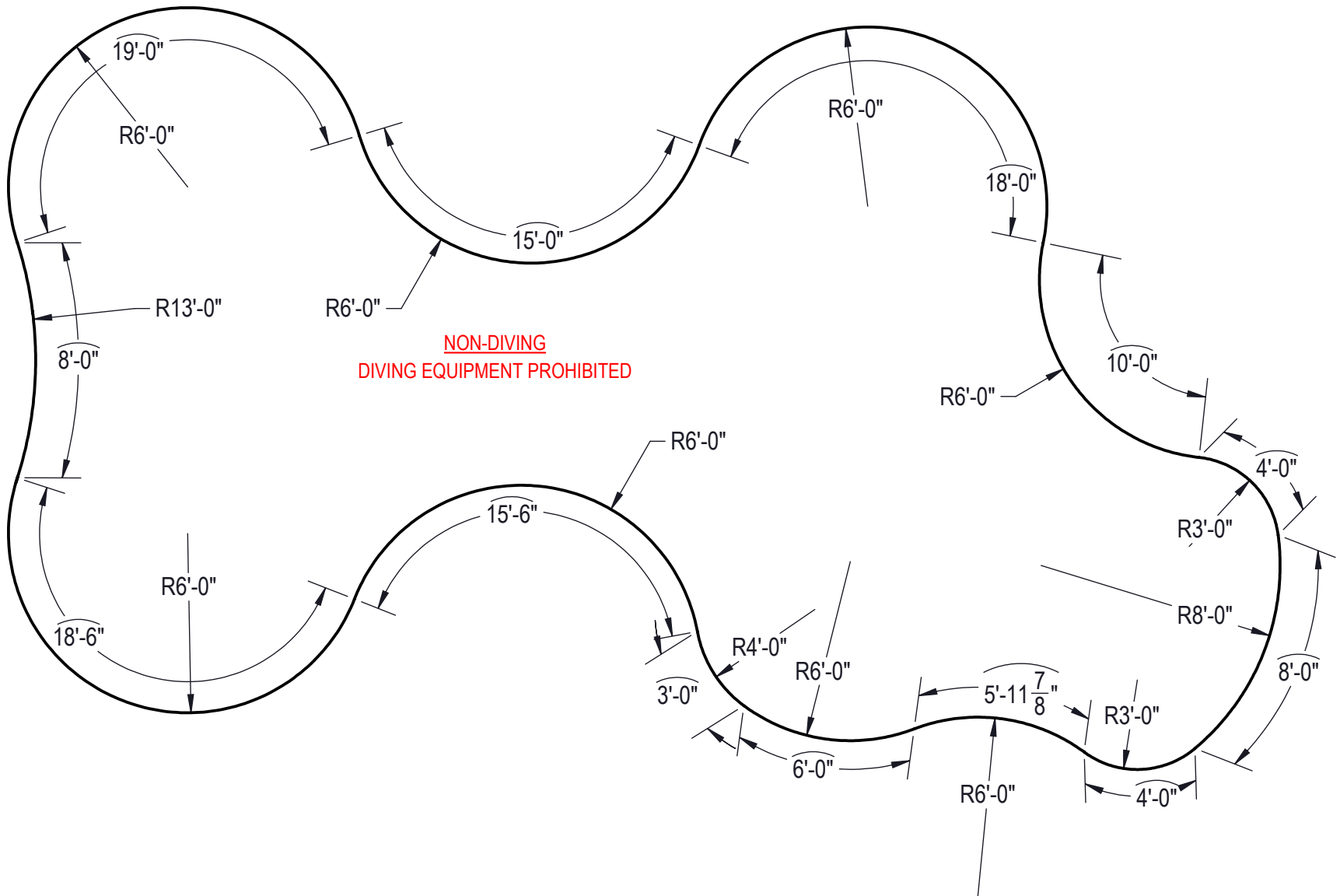


ENGINEERING DRAWING NUMBER: 00017439	WEIGHT:	UNLESS OTHERWISE SPECIFIED DIMENSIONS ARE IN INCHES TOLERANCES DECIMALS: X ± .1 XX ± .01 XXX ± .001 XXXX ± .0005 ANGULAR: X ± 0.5 THIRD ANGLE PROJECTION	DESIGNED BY:	CREATION DATE:	HYDRA POOLS TITLE: LAYOUT, 23'-8" X 42'-7", DUBAI, 6' DEEP, HS106N, LIGHT, 2-1084, 3-INLET, 600 SERIES
	lbs		BUMPHREY	7/11/2013	
	VOLUME:		DETAILED BY:	DETAILED DATE:	
	Inch ³		BUMPHREY	1/30/2018	
	NA		LAST REVISED BY:	LAST REVISED DATE:	
COLOR:	bumphrey	1/30/2018	PART NUMBER:	SCALE:	SIZE:
NA	MATERIAL:		00017439	1:256	A
HEAT TREAT:				SHEET:	
NA				2 OF 4	
FINISH:					
NA					
TEXTURE:					
NA					



**NON-DIVING
DIVING EQUIPMENT PROHIBITED**

ENGINEERING DRAWING NUMBER: 00017439	WEIGHT:	UNLESS OTHERWISE SPECIFIED DIMENSIONS ARE IN INCHES TOLERANCES DECIMALS: X ± .1 XX ± .01 XXX ± .001 XXXX ± .0005 ANGULAR: X ± 0.5 THIRD ANGLE PROJECTION 	DESIGNED BY:	CREATION DATE:	HYDRA POOLS TITLE: LAYOUT, 23'-8" X 42'-7", DUBAI, 6' DEEP, HS106N, LIGHT, 2-1084, 3-INLET, 600 SERIES
	lbs		BUMPHREY	7/11/2013	
	VOLUME:		DETAILED BY:	DETAILED DATE:	
	Inch ³		BUMPHREY	1/30/2018	
	COLOR:		LAST REVISED BY:	LAST REVISED DATE:	
	NA		bumphrey	1/30/2018	
HEAT TREAT:	MATERIAL:	PART NUMBER:	SCALE:	SIZE:	
NA		00017439	1:60	A	
FINISH:			SHEET:		
NA			3 OF 4		
TEXTURE:					
NA					



**NON-DIVING
DIVING EQUIPMENT PROHIBITED**

ENGINEERING DRAWING NUMBER: 00017439	WEIGHT:	UNLESS OTHERWISE SPECIFIED DIMENSIONS ARE IN INCHES TOLERANCES DECIMALS: X ± .1 XX ± .01 XXX ± .001 XXXX ± .0005 ANGULAR: X ± 0.5 THIRD ANGLE PROJECTION 	DESIGNED BY:	CREATION DATE:	HYDRA POOLS TITLE: LAYOUT, 23'-8" X 42'-7", DUBAI, 6' DEEP, HS106N, LIGHT, 2-1084, 3-INLET, 600 SERIES
	lbs		BUMPHREY	7/11/2013	
	VOLUME:		DETAILED BY:	DETAILED DATE:	
	Inch ³		BUMPHREY	1/30/2018	
	COLOR:		LAST REVISED BY:	LAST REVISED DATE:	
	NA		bumphrey	1/30/2018	
HEAT TREAT:	MATERIAL:	PART NUMBER:	SCALE:	SIZE:	
NA		00017439	1:60	A	
FINISH:			SHEET:		
NA			4 OF 4		
TEXTURE:					
NA					