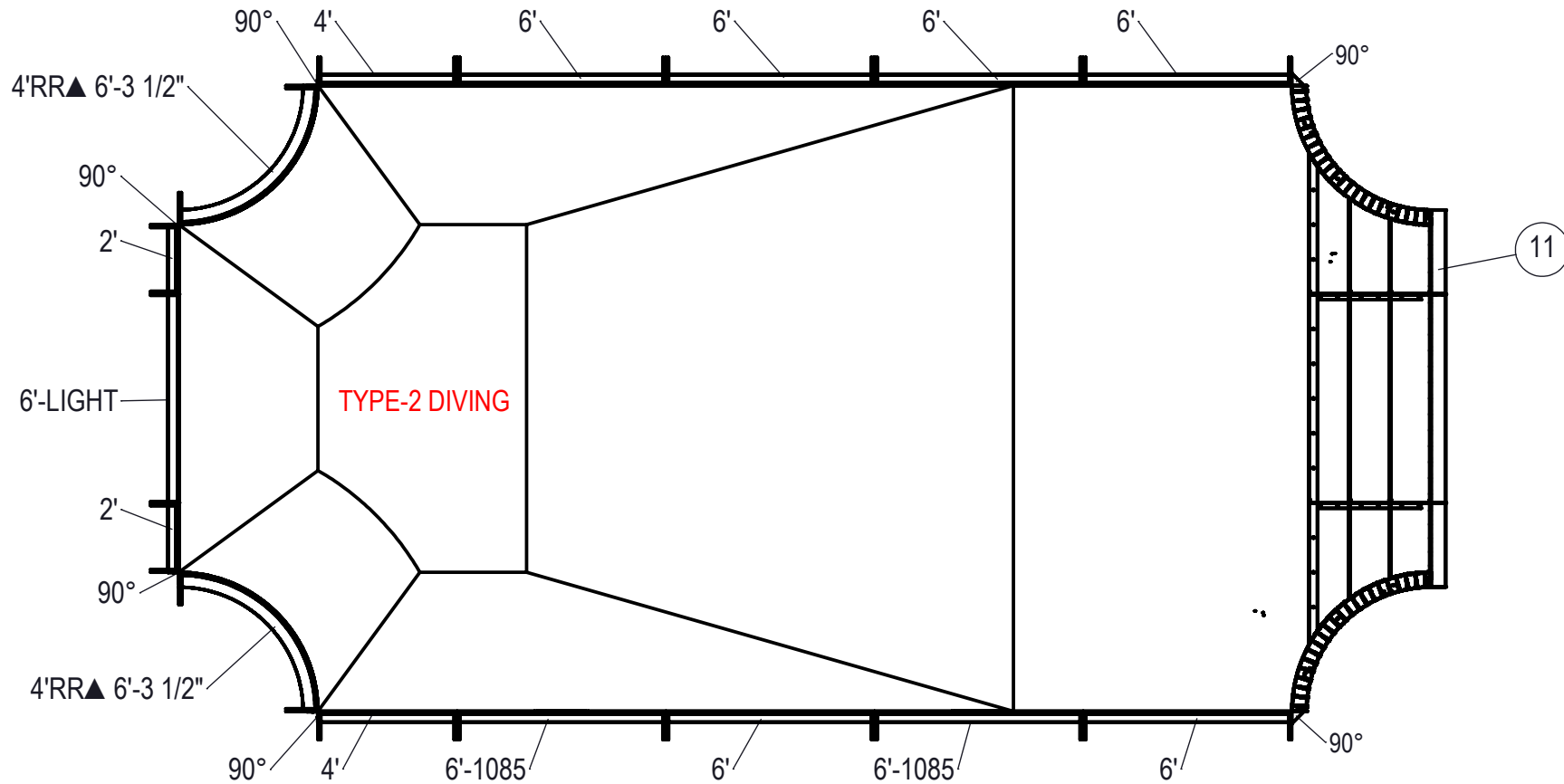


| REVISION HISTORY | | | |
|------------------|--------------------|-----------|--------------|
| REV. | DESCRIPTION | DATE | BY |
| A | RELEASED FOR QUOTE | 2/13/2019 | JRITTENHOUSE |



NOTES:

- THESE ARE FINISHED DIMENSIONS READY FOR THE LINER.
- DIMENSIONS ARE FROM INSIDE POOL PANELS.
- ROPE AND FLOAT ASSEMBLY SHOULD BE INSTALLED IN ACCORDANCE WITH CURRENT ANSI/ASPS/ICC REGULATIONS
- HYDRA LINER TRACK FOR STEPS IS INSTALLED WITH THE BARB FACING THE RISER WALL ON THE STEP.

EXCAVATION NOTES:

- ROUGH EXCAVATION SHOULD BE 2" DEEPER IN EACH INSTANCE.
- SOIL TO HAVE MINIMUM BEARING CAPACITY OF 1500 PSF.
- LOCATE TOP OF POOL AT LEAST 6" ABOVE THE SURROUNDING LAND ELEVATION.
- SEE "OVER DIG DETAIL" FOR EXCAVATION AROUND POOL.
- FILL VOIDS UNDER BASE OF PANELS AND TAMP WELL.
- BACK FILL WITH NON-EXPANSIVE MATERIAL.
- FOLLOW ALL CURRENT ANSI / APSP / ICC GUIDELINES FOR RESIDENTIAL POOLS

IMPORTANT NOTES:

THIS DOCUMENT IS FOR ILLUSTRATIVE PURPOSES ONLY. THE DEALER OR CONTRACTOR WHO SELLS OR INSTALLS YOUR POOL IS AN INDEPENDENT CONTRACTOR AND IS NOT AN AGENT OF THE MANUFACTURER. THE CONSTRUCTION METHODS ILLUSTRATED HERE ARE SUGGESTIONS AND APPLY ONLY TO NORMAL GROUND CONDITIONS. THERE MAY BE ADDITIONAL PRECAUTIONS AND/OR METHODS OF CONSTRUCTION. PROPER INSTALLATION IS THE RESPONSIBILITY OF THE DEALER/BUILDER/CONTRACTOR.

| ITEM | FILE NAME | DESCRIPTION | CUSTOMER DRAWING # | VENDOR PART # | QTY. |
|------|--------------------------------|--|--------------------|---------------|------|
| 1 | BRACE | BRACE, 4 TAB, HYDRA - 200 SERIES | HP299 | HP299 | 16 |
| 2 | SBRACE | BRACE, ADJUSTABLE, DEAD MAN, STEEL, HPSTBBRCE | HPSTBBRCE | HPSTBBRCE | 4 |
| 3 | BRACE, STEEL CORNER, 90° HYDRA | BRACE, STEEL, CORNER, 90° HYDRA | H00125 | H00125 | 4 |
| 4 | PANEL, 2' LONG | PANEL, 2' LONG - 200 SERIES | HP202 | HP202 | 2 |
| 5 | PANEL, 4' LONG | PANEL, 4' LONG - 200 SERIES | HP204 | HP204 | 2 |
| 6 | PANEL, RR | PANEL, 4' REVERSE RADIUS, 6'-3 1/2" LONG, 600 SERIES | HPSD4RR | 0000290 | 2 |
| 7 | PANEL, 6' LONG | PANEL, 6' LONG - 200 SERIES | HP206 | HP206 | 6 |
| 8 | PANEL, 6' LONG WITH 1085 | PANEL, 6' LONG WITH 1085 SKIMMER - 200 SERIES | HP2065 | HP2065 | 2 |
| 9 | PANEL, 6' LONG WITH LIGHT | PANEL, 6' LONG WITH LIGHT - 200 SERIES | HP206L | HP206L | 1 |
| 10 | STAKE | STAKE, 14 GA | HPSSTAKE | 00003484 | 4 |
| 11 | 00008634 | STEP, 18', 3 TREAD, 4' REVERSE RADIUS, LINER TRACK | HSS08634 | | 1 |
| 12 | PANEL, WEDGE | WEDGE, 2 1/2" X 2 1/2" X 90°, 600 SERIES | HPSD90C | 00000051 | 2 |

| | |
|--|------------------------------|
| ENGINEERING DRAWING NUMBER: 00023143 | WEIGHT: 275963.7 lbs |
| | VOLUME: Inch ³ |
| | COLOR: |
| | HEAT TREAT: |
| | FINISH: |
| | TEXTURE: |

UNLESS OTHERWISE SPECIFIED
 DIMENSIONS ARE IN INCHES
 TOLERANCES
 DECIMALS: X ± .1
 XX ± .01
 XXX ± .001
 XXXX ± .0005
 ANGULAR: X ± 0.5
 THIRD ANGLE PROJECTION

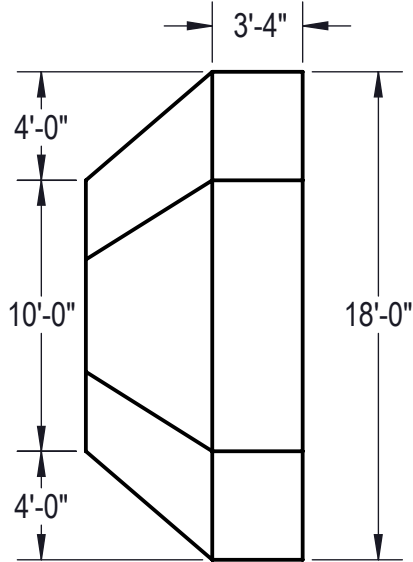
| | |
|---|---------------------------------|
| DESIGNED BY: JRITTENHOUSE | CREATION DATE: 12/11/2014 |
| DETAILED BY: JRITTENHOUSE | DETAILED DATE: 2/13/2019 |
| LAST REVISED BY: JRITTENHOUSE | LAST REVISED DATE: 2/13/2019 |
| MATERIAL: | |

HYDRA POOLS

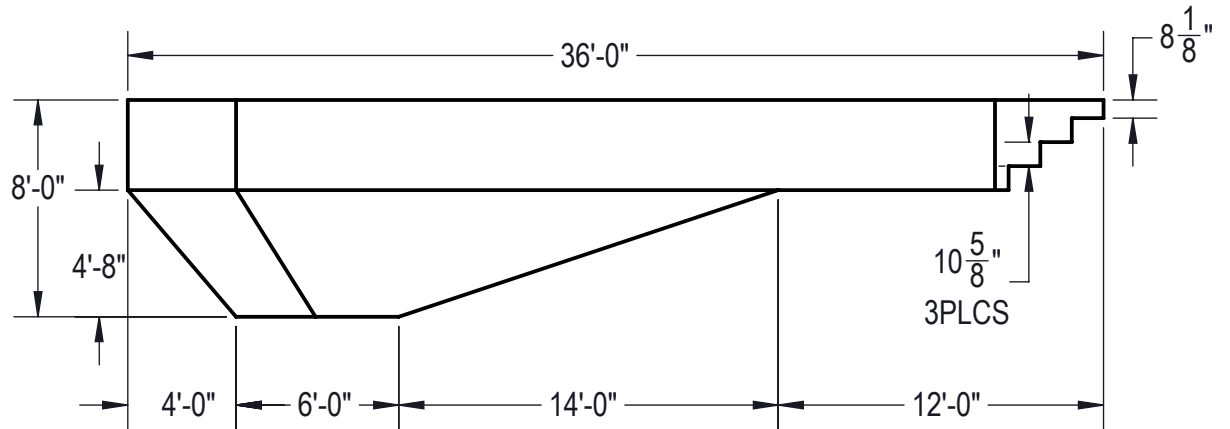
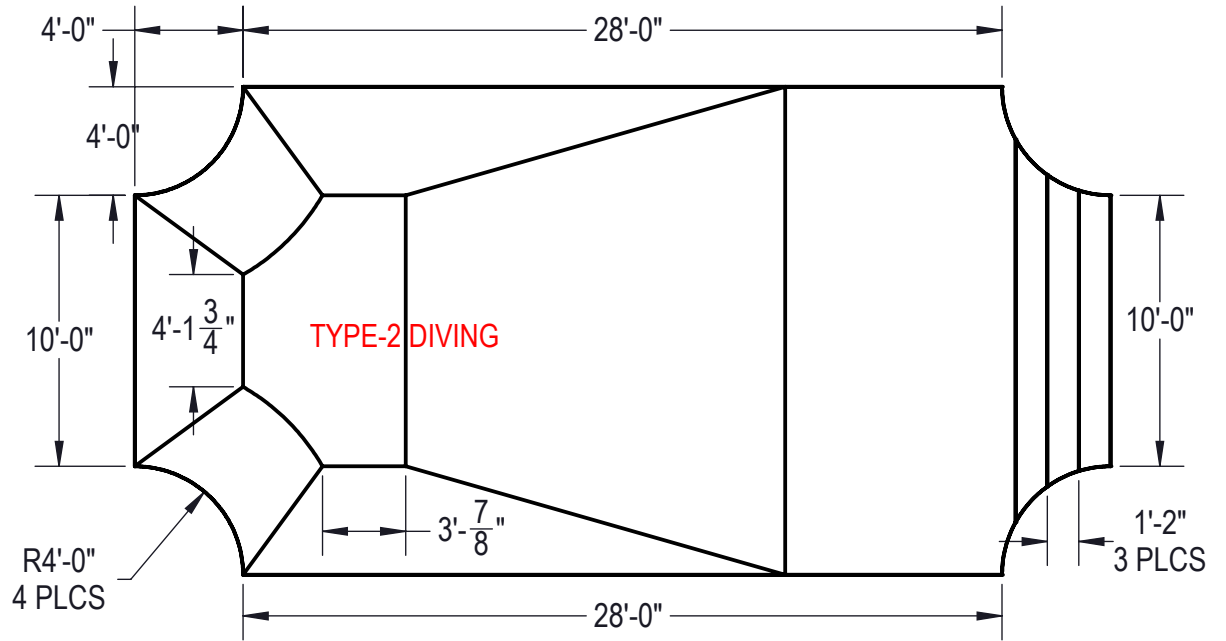
TITLE: LAYOUT, 18' X 36' HAMPTON, 4' RADIUS, 8' DEEP, 00008634, 1-LIGHT, 3- INLET, 2- 1085, 200 SERIES

PART NUMBER: **00023143**

SCALE: 1:60
SHEET: 1 OF 5
SIZE: **A**



Area: 597.73ft ^2
Perimeter: 101.13ft
Volume = 21559 US gallons



NOTES:

1. THESE ARE FINISHED DIMENSIONS READY FOR THE LINER.
2. DIMENSIONS ARE FROM INSIDE POOL PANELS.
3. ROPE AND FLOAT ASSEMBLY SHOULD BE INSTALLED IN ACCORDANCE WITH CURRENT ANSI/ASPS/ICC REGULATIONS
4. HYDRA LINER TRACK FOR STEPS IS INSTALLED WITH THE BARB FACING THE RISER WALL ON THE STEP.

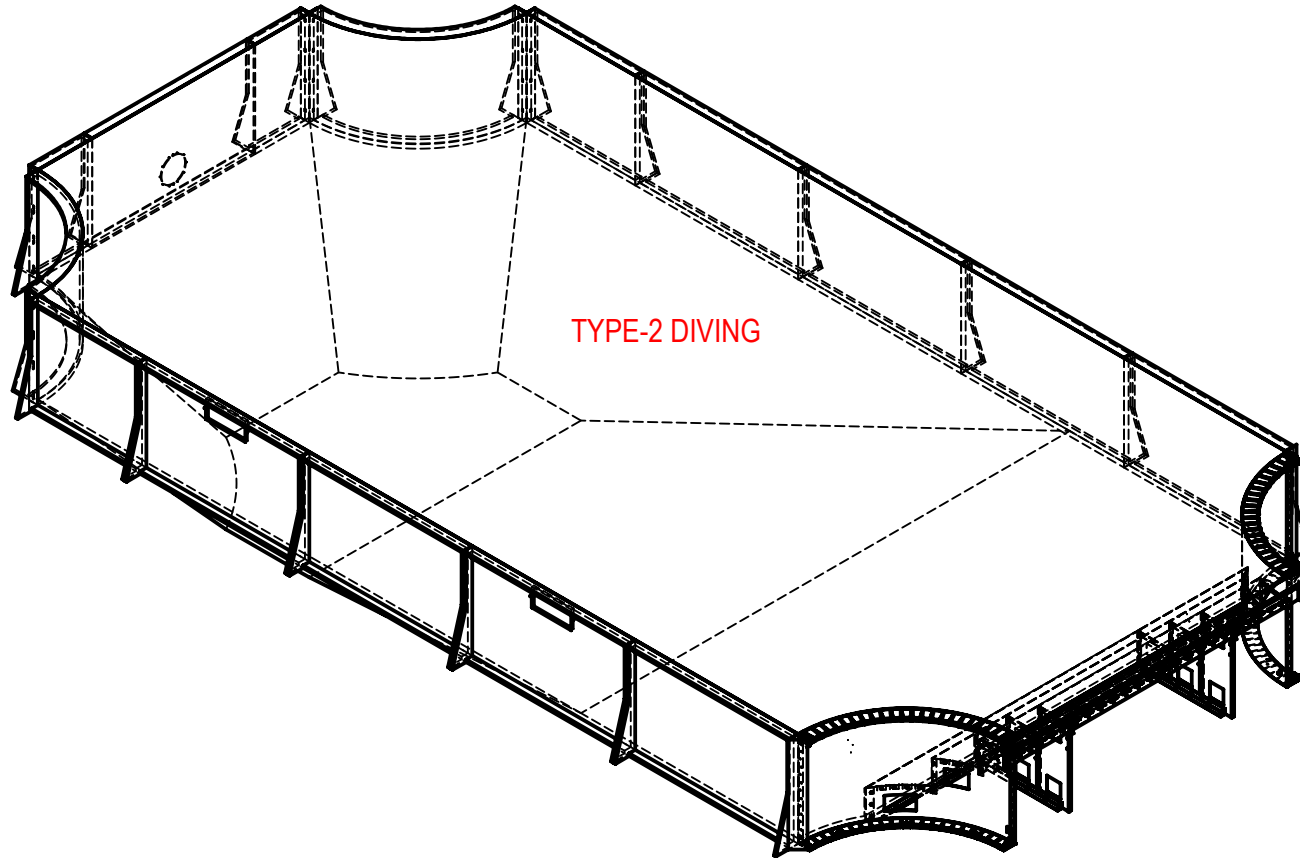
EXCAVATION NOTES:

5. ROUGH EXCAVATION SHOULD BE 2" DEEPER IN EACH INSTANCE.
6. SOIL TO HAVE MINIMUM BEARING CAPACITY OF 1500 PSF.
7. LOCATE TOP OF POOL AT LEAST 6" ABOVE THE SURROUNDING LAND ELEVATION.
8. SEE "OVER DIG DETAIL" FOR EXCAVATION AROUND POOL.
9. FILL VOIDS UNDER BASE OF PANELS AND TAMP WELL.
10. BACK FILL WITH NON-EXPANSIVE MATERIAL.
11. FOLLOW ALL CURRENT ANSI / APSP / ICC GUIDELINES FOR RESIDENTIAL POOLS


IMPORTANT NOTES:

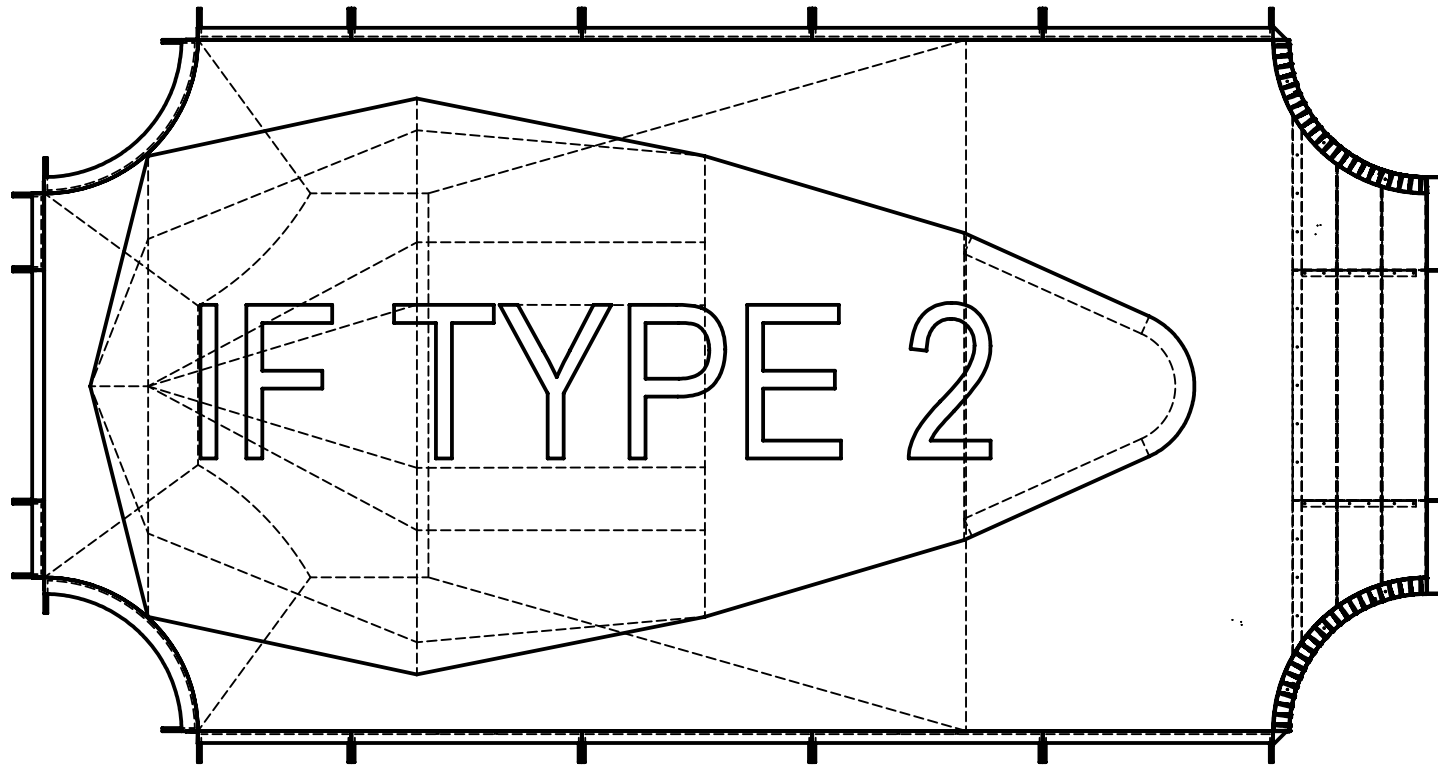
THIS DOCUMENT IS FOR ILLUSTRATIVE PURPOSES ONLY. THE DEALER OR CONTRACTOR WHO SELLS OR INSTALLS YOUR POOL IS AN INDEPENDENT CONTRACTOR AND IS NOT AN AGENT OF THE MANUFACTURER. THE CONSTRUCTION METHODS ILLUSTRATED HERE ARE SUGGESTIONS AND APPLY ONLY TO NORMAL GROUND CONDITIONS. THERE MAY BE ADDITIONAL PRECAUTIONS AND/OR METHODS OF CONSTRUCTION. PROPER INSTALLATION IS THE RESPONSIBILITY OF THE DEALER/BUILDER/CONTRACTOR.

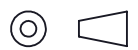
| | | | | | | |
|--|------------------------------|---|----------------------------------|---------------------------------|---|--|
| ENGINEERING DRAWING NUMBER: 00023143 | WEIGHT: lbs | UNLESS OTHERWISE SPECIFIED DIMENSIONS ARE IN INCHES TOLERANCES DECIMALS: X ± .1 XX ± .01 XXX ± .001 XXXX ± .0005 ANGULAR: X ± 0.5 THIRD ANGLE PROJECTION | DESIGNED BY: JRITTENHOUSE | CREATION DATE: 4/16/2013 | HYDRA POOLS | |
| | VOLUME: Inch ³ | | DETAILED BY: JRITTENHOUSE | DETAILED DATE: 2/13/2019 | | |
| | COLOR: NA | | LAST REVISED BY: Jrittenhouse | LAST REVISED DATE: 2/13/2019 | TITLE: LAYOUT, 18' X 36' HAMPTON, 4' RADIUS, 8' DEEP, 00008634, 1-LIGHT, 3- INLET, 2- 1085, 200 SERIES | |
| | HEAT TREAT: NA | | MATERIAL: | | | |
| FINISH: NA | | | | | SHEET: 2 OF 5 | |
| TEXTURE: NA | | | | | | |



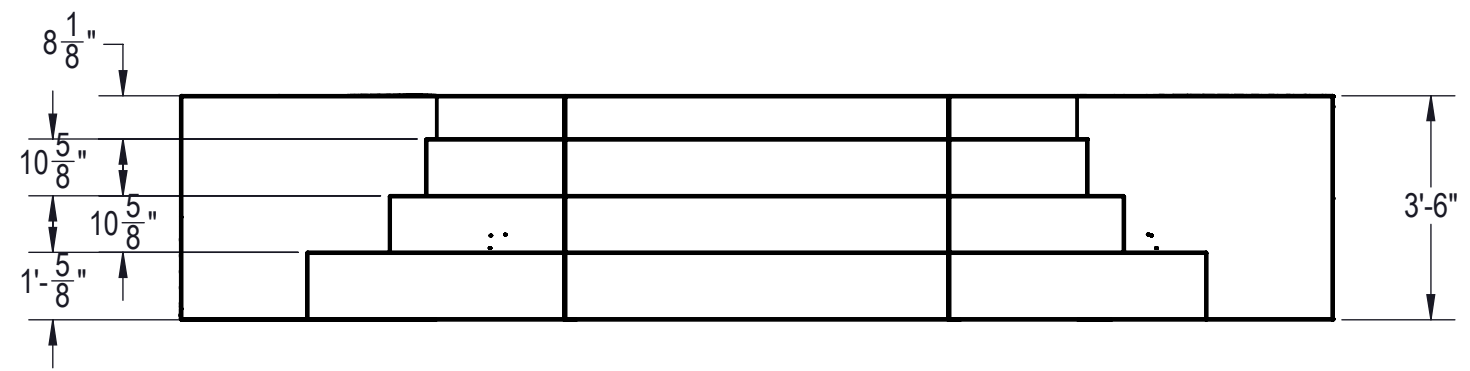
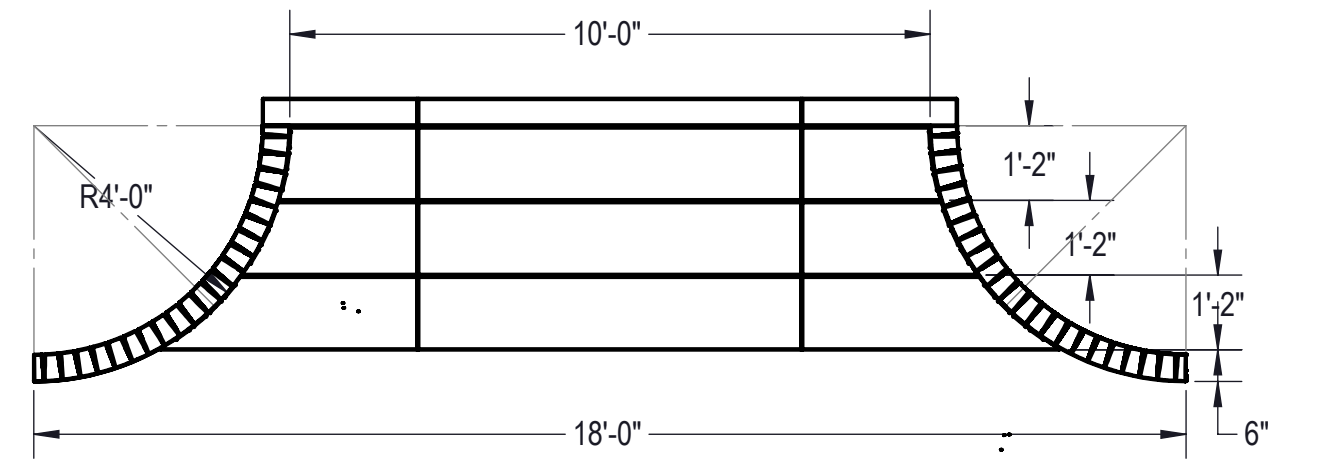
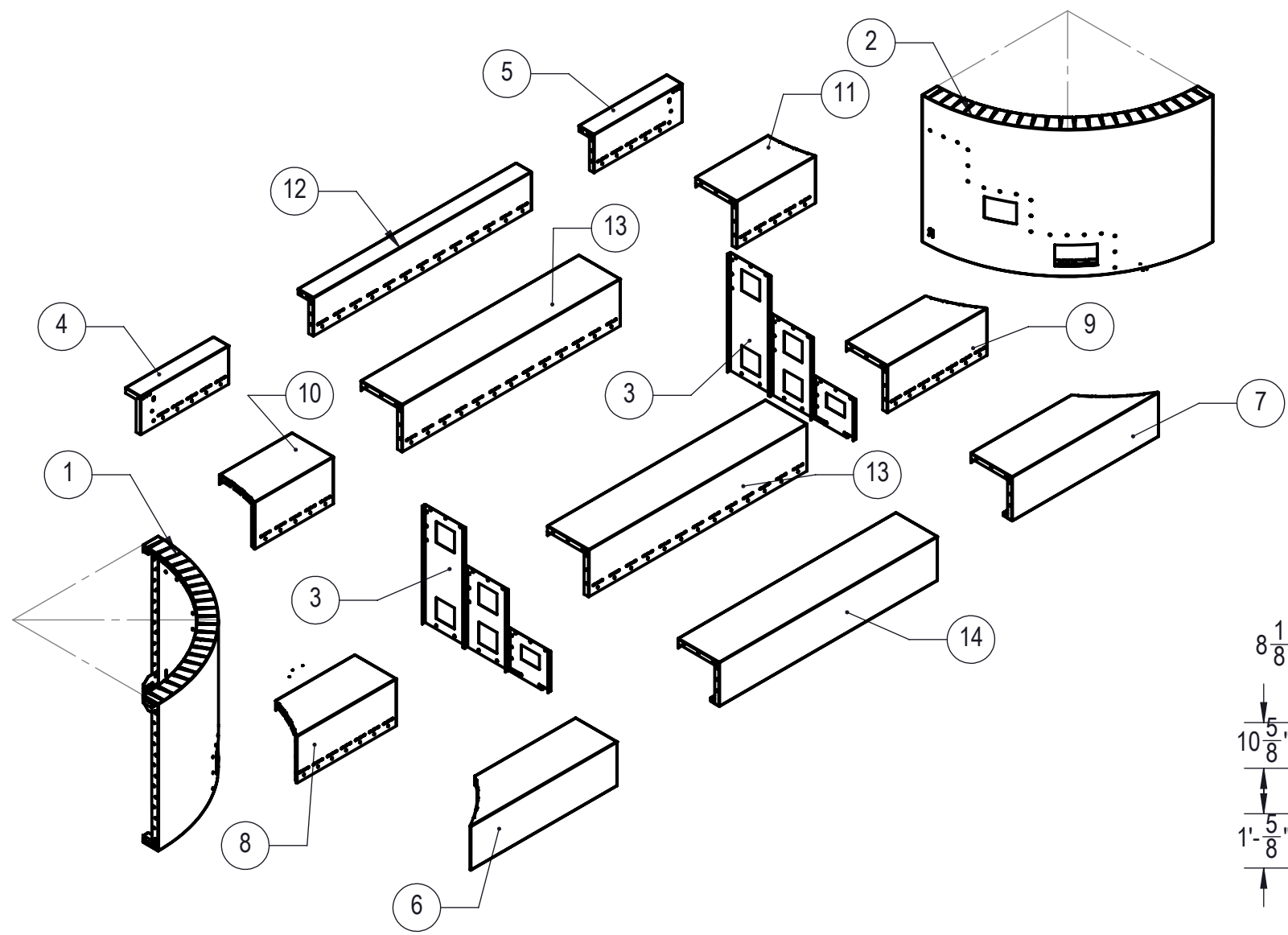
TYPE-2 DIVING

| | | | | | | |
|--|------------------------------|---|----------------------------------|---------------------------------|---|--|
| ENGINEERING DRAWING NUMBER: 00023143 | WEIGHT: 275963.7 lbs | UNLESS OTHERWISE SPECIFIED DIMENSIONS ARE IN INCHES TOLERANCES DECIMALS: X ± .1 XX ± .01 XXX ± .001 XXXX ± .0005 ANGULAR: X ± 0.5 THIRD ANGLE PROJECTION  | DESIGNED BY: JRITTENHOUSE | CREATION DATE: 12/11/2014 | HYDRA POOLS | |
| | VOLUME: Inch ³ | | DETAILED BY: JRITTENHOUSE | DETAILED DATE: 2/13/2019 | | |
| | COLOR: | | LAST REVISED BY: jrittenhouse | LAST REVISED DATE: 2/13/2019 | | |
| | HEAT TREAT: | | MATERIAL: | | TITLE: LAYOUT, 18' X 36' HAMPTON, 4' RADIUS, 8' DEEP, 00008634, 1-LIGHT, 3- INLET, 2- 1085, 200 SERIES | |
| | FINISH: | | | | | |
| | TEXTURE: | | | | | |
| | | PART NUMBER: | | SCALE: 1:60 | SIZE: A | |
| | | 00023143 | | SHEET: 3 OF 5 | | |



| | | | | | | | | | | |
|--|------------------------------|---|----------------------------------|---------------------------------|---|--|--|----------------|---------------------------------|-----------------|
| ENGINEERING DRAWING NUMBER: 00023143 | WEIGHT: 275963.7 lbs | UNLESS OTHERWISE SPECIFIED DIMENSIONS ARE IN INCHES TOLERANCES DECIMALS: X ± .1 XX ± .01 XXX ± .001 XXXX ± .0005 ANGULAR: X ± 0.5 THIRD ANGLE PROJECTION  | DESIGNED BY: JRITTENHOUSE | CREATION DATE: 12/11/2014 | HYDRA POOLS | | | | | |
| | VOLUME: Inch ³ | | DETAILED BY: JRITTENHOUSE | DETAILED DATE: 2/13/2019 | | | | | | |
| | COLOR: | | LAST REVISED BY: jrittenhouse | LAST REVISED DATE: 2/13/2019 | TITLE: LAYOUT, 18' X 36' HAMPTON, 4' RADIUS, 8' DEEP, 00008634, 1-LIGHT, 3- INLET, 2- 1085, 200 SERIES | | | | | |
| | HEAT TREAT: | | MATERIAL: | | | | | | | |
| | FINISH: | | SIZE: A | SHEET: 4 OF 5 | | | | SCALE: 1:60 | PART NUMBER: 00023143 | REV A |
| | TEXTURE: | | | | | | | | | |

| REVISION HISTORY | | | | |
|------------------|---|-----------|-----|-----------|
| REV. | DESCRIPTION | DATE | ECO | BY |
| A | RELEASED FOR QUOTE | 3/23/2015 | | LNELSON |
| B | STEP PROJECT: UPDATED DIG NOTES & TITLE BLOCK | 4/25/2018 | | RHOUSTON |
| C | ADDED TEXTURE | 06/06/18 | | MWILLIAMS |



NOTES:

- THESE ARE FINISHED DIMENSIONS READY FOR THE LINER.
- DIMENSIONS ARE FROM INSIDE POOL PANELS.
- ROPE AND FLOAT ASSEMBLY SHOULD BE INSTALLED IN ACCORDANCE WITH CURRENT ANSI/APSP/ICC REGULATIONS
- HYDRA LINER TRACK FOR STEPS IS INSTALLED WITH THE BARB FACING THE RISER WALL ON THE STEP.

EXCAVATION NOTES:

- ROUGH EXCAVATION SHOULD BE 2" DEEPER IN EACH INSTANCE.
- SOIL TO HAVE MINIMUM BEARING CAPACITY OF 1500 PSF.
- LOCATE TOP OF POOL AT LEAST 6" ABOVE THE SURROUNDING LAND ELEVATION.
- SEE "OVER DIG DETAIL" FOR EXCAVATION AROUND POOL.
- FILL VOIDS UNDER BASE OF PANELS AND TAMP WELL.
- BACK FILL WITH NON-EXPANSIVE MATERIAL.
- FOLLOW ALL CURRENT ANSI / APSP / ICC GUIDELINES FOR RESIDENTIAL POOLS

IMPORTANT NOTES:

THIS DOCUMENT IS FOR ILLUSTRATIVE PURPOSES ONLY. THE DEALER OR CONTRACTOR WHO SELLS OR INSTALLS YOUR POOL IS AN INDEPENDENT CONTRACTOR AND IS NOT AN AGENT OF THE MANUFACTURER. THE CONSTRUCTION METHODS ILLUSTRATED HERE ARE SUGGESTIONS AND APPLY ONLY TO NORMAL GROUND CONDITIONS. THERE MAY BE ADDITIONAL PRECAUTIONS AND/OR METHODS OF CONSTRUCTION. PROPER INSTALLATION IS THE RESPONSIBILITY OF THE DEALER/BUILDER/CONTRACTOR.

| ITEM | FILE NAME | DESCRIPTION | CUSTOMER DRAWING # | VENDOR PART # | QTY. | VENDOR NAME | MATERIAL |
|------|------------|---|--------------------|---------------|------|--------------|--------------|
| 1 | 00008578 | PANEL, 4' RR, LEFT SIDE, FITS 8576, ASSEMBLY | | | 1 | | |
| 2 | 00008577 | PANEL, 4' RR, RIGHT SIDE, FITS 8576, ASSEMBLY | | | 1 | | |
| 3 | 00004115 | SUPPORT, CENTER, 3 TREAD STEP, ASSEMBLY | | | 2 | | |
| 4 | 00008620 | TOP BACK, LEFT SIDE, FITS 8618 | | | 1 | SAMSON STEEL | G- 235,14 GA |
| 5 | 00008619 | TOP BACK, RIGHT SIDE, FITS 8618 | | | 1 | SAMSON STEEL | G- 235,14 GA |
| 6 | 00008626 | TREAD, BOTTOM, LEFT SIDE, FITS 8618 | | | 1 | SAMSON STEEL | G- 235,14 GA |
| 7 | 00008625 | TREAD, BOTTOM, RIGHT SIDE, FITS 8618 | | | 1 | SAMSON STEEL | G- 235,14 GA |
| 8 | 00008624 | TREAD, MIDDLE, LEFT SIDE, FITS 8618 | | | 1 | SAMSON STEEL | G- 235,14 GA |
| 9 | 00008623 | TREAD, MIDDLE, RIGHT SIDE, FITS 8618 | | | 1 | SAMSON STEEL | G- 235,14 GA |
| 10 | 00008622 | TREAD, TOP, LEFT SIDE, FITS 8618 | | | 1 | SAMSON STEEL | G- 235,14 GA |
| 11 | 00008621 | TREAD, TOP, RIGHT SIDE, FITS 8618 | | | 1 | SAMSON STEEL | G- 235,14 GA |
| 12 | 00004219 | TREAD, STEP, 3 TREAD, "A", 6' LONG | 00004219 | 00004219 | 1 | SAMSON STEEL | G- 235,14 GA |
| 13 | 00004220 | TREAD, STEP, 3 TREAD, "B", 6' LONG | 00004220 | 00004220 | 2 | SAMSON STEEL | G- 235,14 GA |
| 14 | 00004221 | TREAD, STEP, 3 TREAD, "C", 6' LONG | 00004221 | 00004221 | 1 | SAMSON STEEL | G- 235,14 GA |
| 15 | BOLT, PACK | BOLT, FLANGE, 3/8-16 X 1", PACK (50) | HPS1916 | HPS1916 | 4 | | AISI 1020 |

| | | | | | |
|--|--|--|---|--|------------------------------|
| DESIGNER'S DRAWING NUMBER 00008634 | WEIGHT: 408.9 lbs VOLUME: Inch ³ | UNLESS OTHERWISE SPECIFIED DIMENSIONS ARE IN INCHES TOLERANCES DECIMALS: X ± .1 XX ± .01 XXX ± .001 XXXX ± .0005 ANGLAR: X ± 0.5 THIRD ANGLE PROJECTION | DESIGNED BY: LNELSON DETAILED BY: JRITTENHOUSE LAST REVISED BY: JRITTENHOUSE MATERIAL: | CREATION DATE: 3/18/2015 DETAILED DATE: 2/13/2019 LAST REVISED DATE: 2/13/2019 | SAMSON STEEL |
| | TITLE: STEP, 18', 3 TREAD, 4' REVERSE RADIUS, LINER TRACK | | | | SCALE: 1:48 SHEET: 5 OF 5 |
| | PART NUMBER: HSS08634 | | | | SIZE: B |
| | REV. LEVEL: A-REV. DATE: JULY 29, 2015-DOCUMENT ID: CF7310, ANSI B | | | | |

CHECK IN DATE/TIME: Wednesday, February 13, 2019 2:07:56 PM
 MADE FROM: 00019310