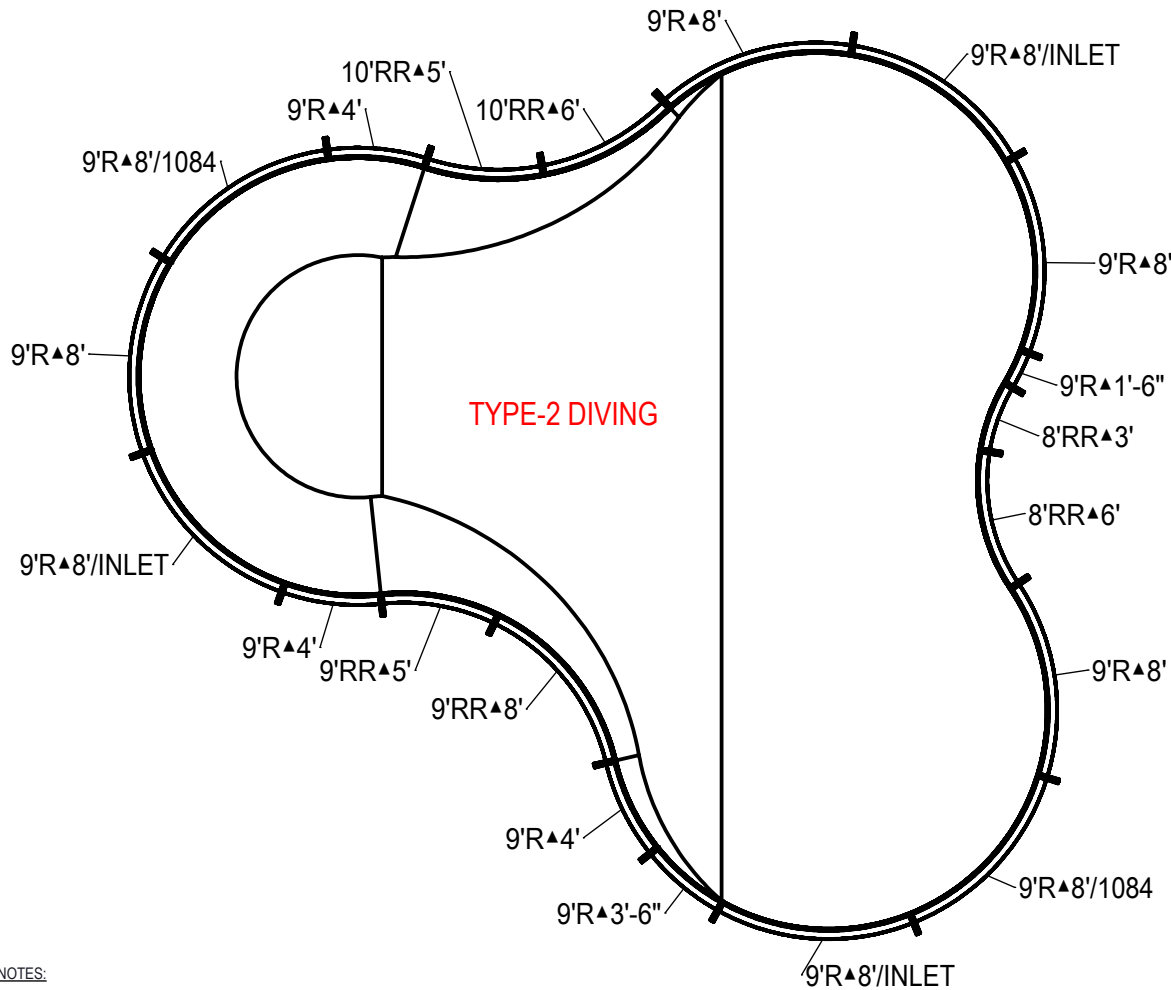


REVISION HISTORY				
REV.	DESCRIPTION	DATE	ECO	BY
A	RELEASED FOR QUOTE	10/27/2020		adold

MIRROR NUMBER

MADE FROM:

CHECK IN DATE/TIME: Tuesday, October 27, 2020 2:28:52 PM



NOTES:

- THESE ARE FINISHED DIMENSIONS READY FOR THE LINER.
- DIMENSIONS ARE FROM INSIDE POOL PANELS.
- ROPE AND FLOAT ASSEMBLY SHOULD BE INSTALLED IN ACCORDANCE WITH CURRENT ANSI/ASPS/ICC REGULATIONS
- HYDRA LINER TRACK FOR STEPS IS INSTALLED WITH THE BARB FACING THE RISER WALL ON THE STEP.

EXCAVATION NOTES:

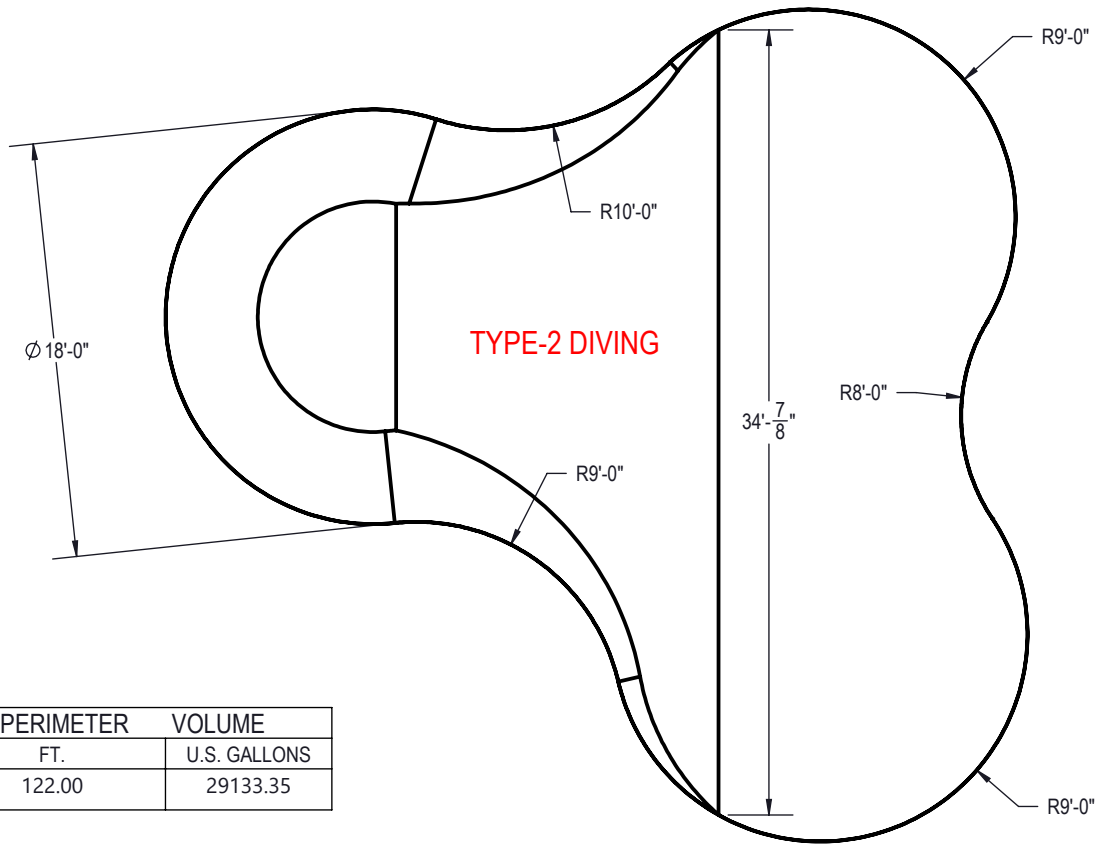
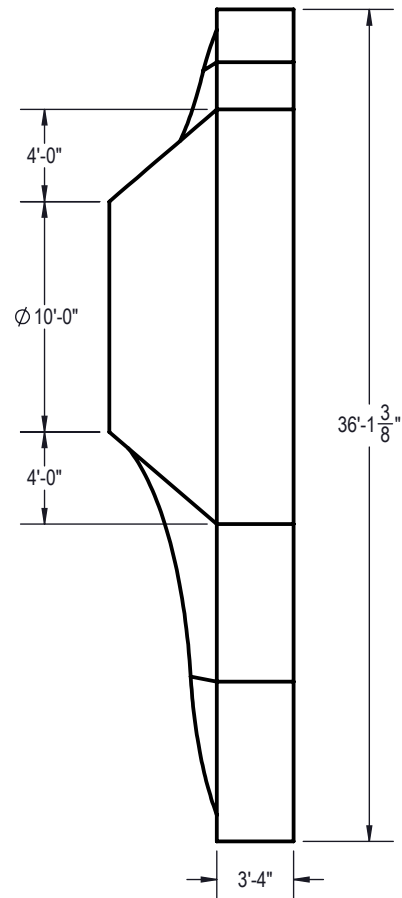
- ROUGH EXCAVATION SHOULD BE 2" DEEPER IN EACH INSTANCE.
- SOIL TO HAVE MINIMUM BEARING CAPACITY OF 1500 PSF.
- LOCATE TOP OF POOL AT LEAST 6" ABOVE THE SURROUNDING LAND ELEVATION.
- SEE "OVER DIG DETAIL" FOR EXCAVATION AROUND POOL.
- FILL VOIDS UNDER BASE OF PANELS AND TAMP WELL.
- BACK FILL WITH NON-EXPANSIVE MATERIAL.
- FOLLOW ALL CURRENT ANSI / APSP / ICC GUIDELINES FOR RESIDENTIAL POOLS

IMPORTANT NOTES:

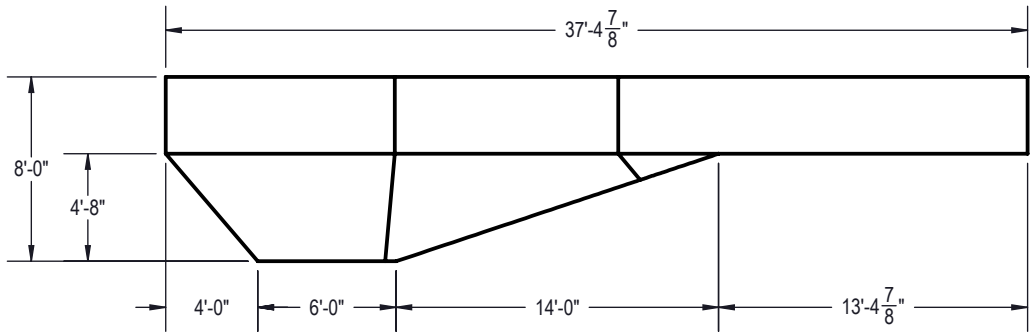
THIS DOCUMENT IS FOR ILLUSTRATIVE PURPOSES ONLY. THE DEALER OR CONTRACTOR WHO SELLS OR INSTALLS YOUR POOL IS AN INDEPENDENT CONTRACTOR AND IS NOT AN AGENT OF THE MANUFACTURER. THE CONSTRUCTION METHODS ILLUSTRATED HERE ARE SUGGESTIONS AND APPLY ONLY TO NORMAL GROUND CONDITIONS. THERE MAY BE ADDITIONAL PRECAUTIONS AND/OR METHODS OF CONSTRUCTION. PROPER INSTALLATION IS THE RESPONSIBILITY OF THE DEALER/BUILDER/CONTRACTOR.

ITEM	FILE NAME	DESCRIPTION	CUSTOMER DRAWING #	VENDOR PART #	QTY.
1	BOLT, PACK	BOLT, FLANGE, 3/8-16 X 1", PACK (50)	HPS1916	HPS1916	8
2	SBRACE	BRACE, FOLD OVER WITH TURNBUCKLE, STEEL, HPSFOB	HPSFOB	HPSFOB	20
3	PANEL, RR	PANEL, 10' REVERSE RADIUS, 5' LONG, 700 SERIES	HPSE10RR5	00020651	1
4	PANEL, RR	PANEL, 10' REVERSE RADIUS, 6' LONG, 700 SERIES	HPSE10RR6	00020652	1
5	PANEL, RR	PANEL, 8' REVERSE RADIUS, 3' LONG, 700 SERIES	HPSE8RR3	00020728	1
6	PANEL, RR	PANEL, 8' REVERSE RADIUS, 6' LONG, 700 SERIES	HPSE8RR6	00020731	1
7	PANEL, RADIUS	PANEL, 9' RADIUS, 1'-6" LONG, 700 SERIES	HPSE9R16	00020679	1
8	PANEL, RADIUS	PANEL, 9' RADIUS, 3'-6" LONG, 700 SERIES	HPSE9R36	00033291	1
9	PANEL, RADIUS	PANEL, 9' RADIUS, 4' LONG, 700 SERIES	HPSE9R4	00020683	3
10	PANEL, RADIUS	PANEL, 9' RADIUS, 8' LONG, 1084, 700 SERIES	HPSE9R884	00020704	2
11	PANEL, RADIUS	PANEL, 9' RADIUS, 8' LONG, 700 SERIES	HPSE9R8	00020703	4
12	PANEL, RADIUS	PANEL, 9' RADIUS, 8', INLET, 700 SERIES	HPSE9R8I	00020705	3
13	PANEL, RR	PANEL, 9' REVERSE RADIUS, 5' LONG, 700 SERIES	HPSE9RR5	00021816	1
14	PANEL, RR	PANEL, 9' REVERSE RADIUS, 8' LONG, 700 SERIES	HPSE9RR8	00020714	1
15	STAKE	STAKE, 14 GA	HPSSTAKE	00003484	20

ENGINEERING DRAWING NUMBER: 00033552	WEIGHT: lbs	UNLESS OTHERWISE SPECIFIED DIMENSIONS ARE IN INCHES TOLERANCES DECIMALS: X ± .1 XX ± .01 XXX ± .001 XXXX ± .0005 ANGULAR: X ± 0.5 THIRD ANGLE PROJECTION 	DESIGNED BY: ADOLD	CREATION DATE: 7/1/2013	ATLAS STEEL TITLE: LAYOUT, 18' X 37' X 36', AMEBA, RIGHT, 8' DEEP, 3- INLETS, 2- 1084, 700 SERIES		
	VOLUME: Inch³		DETAILED BY: adold	DETAILED DATE: 10/27/2020			
	COLOR:		LAST REVISED BY: adold	LAST REVISED DATE: 10/27/2020	PART NUMBER: 00033552		
	HEAT TREAT:		MATERIAL:			REV A	
	FINISH:		SIZE: A	SHEET: 1 OF 4			SCALE: 1:192
TEXTURE:							



AREA	PERIMETER	VOLUME
SQ. FT.	FT.	U.S. GALLONS
875.38	122.00	29133.35



NOTES:

- THESE ARE FINISHED DIMENSIONS READY FOR THE LINER.
- DIMENSIONS ARE FROM INSIDE POOL PANELS.
- ROPE AND FLOAT ASSEMBLY SHOULD BE INSTALLED IN ACCORDANCE WITH CURRENT ANSI/ASPS/ICC REGULATIONS
- HYDRA LINER TRACK FOR STEPS IS INSTALLED WITH THE BARB FACING THE RISER WALL ON THE STEP.

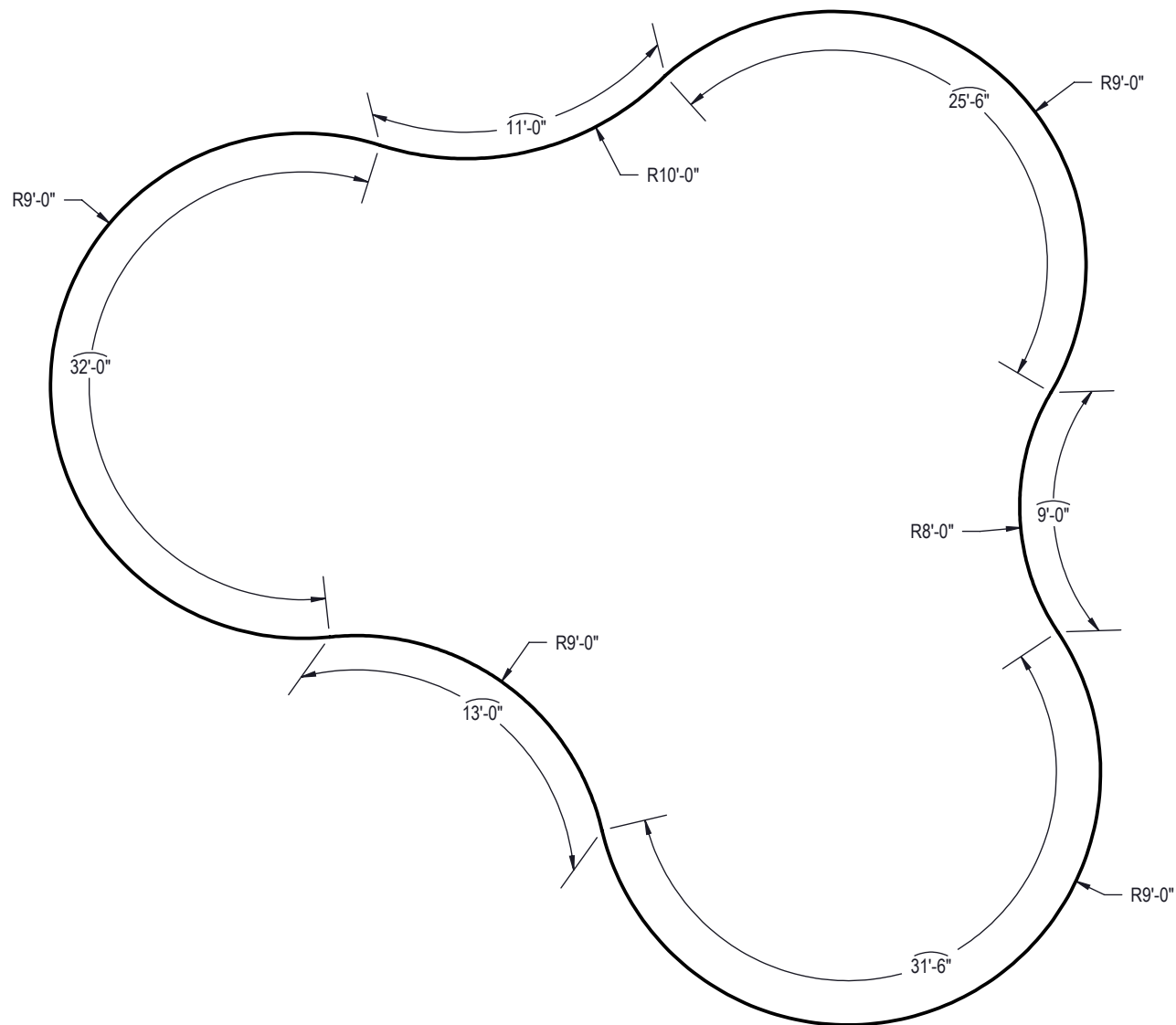
EXCAVATION NOTES:

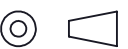
- ROUGH EXCAVATION SHOULD BE 2" DEEPER IN EACH INSTANCE.
- SOIL TO HAVE MINIMUM BEARING CAPACITY OF 1500 PSF.
- LOCATE TOP OF POOL AT LEAST 6" ABOVE THE SURROUNDING LAND ELEVATION.
- SEE "OVER DIG DETAIL" FOR EXCAVATION AROUND POOL.
- FILL VOIDS UNDER BASE OF PANELS AND TAMP WELL.
- BACK FILL WITH NON-EXPANSIVE MATERIAL.
- FOLLOW ALL CURRENT ANSI / APSP / ICC GUIDELINES FOR RESIDENTIAL POOLS

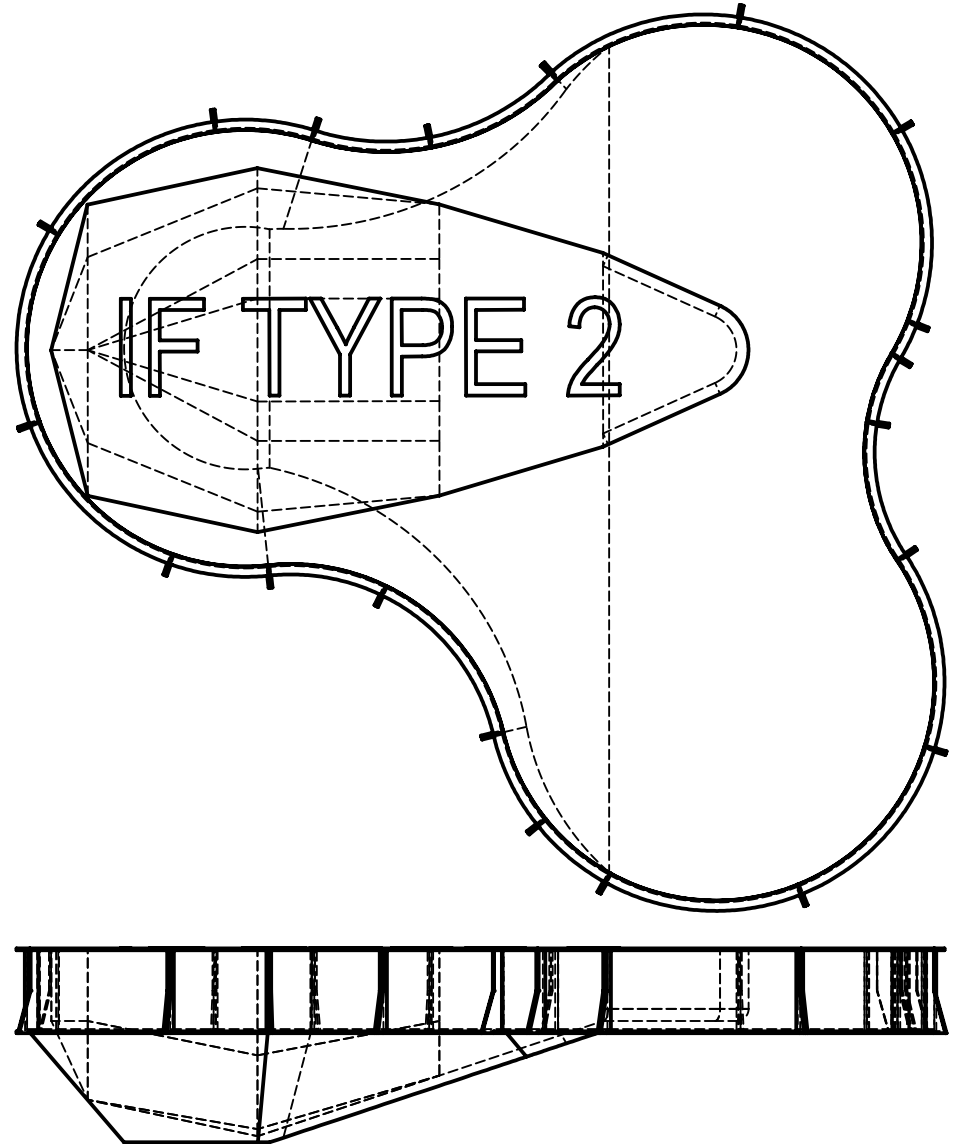
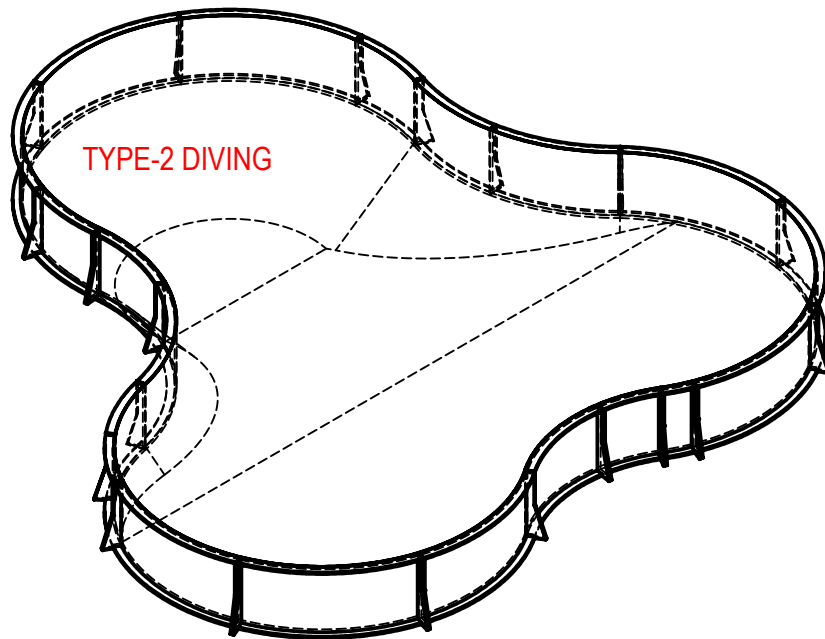
IMPORTANT NOTES:

THIS DOCUMENT IS FOR ILLUSTRATIVE PURPOSES ONLY. THE DEALER OR CONTRACTOR WHO SELLS OR INSTALLS YOUR POOL IS AN INDEPENDENT CONTRACTOR AND IS NOT AN AGENT OF THE MANUFACTURER. THE CONSTRUCTION METHODS ILLUSTRATED HERE ARE SUGGESTIONS AND APPLY ONLY TO NORMAL GROUND CONDITIONS. THERE MAY BE ADDITIONAL PRECAUTIONS AND/OR METHODS OF CONSTRUCTION. PROPER INSTALLATION IS THE RESPONSIBILITY OF THE DEALER/BUILDER/CONTRACTOR.

ENGINEERING DRAWING NUMBER: 00033552	WEIGHT: lbs	UNLESS OTHERWISE SPECIFIED DIMENSIONS ARE IN INCHES TOLERANCES DECIMALS: X ± .1 XX ± .01 XXX ± .001 XXXX ± .0005 ANGULAR: X ± 0.5 THIRD ANGLE PROJECTION 	DESIGNED BY: ADOLD	CREATION DATE: 7/1/2013	ATLAS STEEL		
	VOLUME: 29133.35 Inch³		DETAILED BY: adold	DETAILED DATE: 10/27/2020			
	COLOR:		LAST REVISED BY: adold	LAST REVISED DATE: 10/27/2020	TITLE: LAYOUT, 18' X 37' X 36', AMEBA, RIGHT, 8' DEEP, 3- INLETS, 2- 1084, 700 SERIES		
	HEAT TREAT:		MATERIAL:				
	FINISH:		SIZE: A	SHEET: 2 OF 4			
TEXTURE:							



ENGINEERING DRAWING NUMBER: 00033552	WEIGHT: lbs	UNLESS OTHERWISE SPECIFIED DIMENSIONS ARE IN INCHES TOLERANCES DECIMALS: X ± .1 XX ± .01 XXX ± .001 XXXX ± .0005 ANGULAR: X ± 0.5 THIRD ANGLE PROJECTION 	DESIGNED BY: ADOLD	CREATION DATE: 7/1/2013	ATLAS STEEL							
	VOLUME: 29133.35 Inch³		DETAILED BY: adold	DETAILED DATE: 10/27/2020								
	COLOR:		LAST REVISED BY: adold	LAST REVISED DATE: 10/27/2020	TITLE: LAYOUT, 18' X 37' X 36', AMEBA, RIGHT, 8" DEEP, 3- INLETS, 2- 1084, 700 SERIES							
	HEAT TREAT:		MATERIAL:									
	FINISH:		SIZE: A					SHEET: 3 OF 4	SCALE: 1:192	PART NUMBER: 00033552	REV	A
	TEXTURE:											



ENGINEERING DRAWING NUMBER: 00033552	WEIGHT: lbs	UNLESS OTHERWISE SPECIFIED DIMENSIONS ARE IN INCHES TOLERANCES DECIMALS: X ± .1 XX ± .01 XXX ± .001 XXXX ± .0005 ANGULAR: X ± 0.5 THIRD ANGLE PROJECTION 	DESIGNED BY: ADOLD	CREATION DATE: 7/1/2013	ATLAS STEEL						
	VOLUME: Inch³		DETAILED BY: adold	DETAILED DATE: 10/27/2020							
	COLOR:		LAST REVISED BY: adold	LAST REVISED DATE: 10/27/2020	TITLE: LAYOUT, 18' X 37' X 36", AMEBA, RIGHT, 8" DEEP, 3- INLETS, 2- 1084, 700 SERIES						
	HEAT TREAT:		MATERIAL:								
	FINISH:		SIZE: A					SHEET: 4 OF 4	SCALE: 1:192	PART NUMBER: 00033552	REV A
	TEXTURE:										