



Pool Seat



30" Sun Shelf Table
shown with optional cup holder



Pool or Spa Table

DESTINATION SERIES TABLES & SEATING

Make the most of a sun shelf with tables and seating that allows you to cool off without splashing around. Bring your book, your favorite beverage and a snack to spend hours relaxing in your personal destination space.

- 16" & 30" Round Tables
- 30" Round Tables available with optional cup holders
- Tables with integrated umbrella support feature
- 16" Round Seats
- Tables and Seats anchor into 6" anchors
- Adapter Kits available to allow tables to fit most umbrella anchors on sun shelves
- Perfect for gunite and vinyl pools
- Products are easily removable without tools
- Salt pool friendly
- Made in the USA

	Surface Diameter	Height from Pool Floor**	Cup Holders	Pool Type
Pool Seat*	16"	36"	No	Gunite, Vinyl
Sun Shelf Table	16"	12"-18"	No	Gunite, Vinyl
	30"		Yes	
Pool or Spa Table	30"	48"	Yes	Gunite, Vinyl

* Not recommended for use with Sun Shelf or Spa Tables.

** When inserted into the available 6" (1.90) bronze anchors.



DESTINATION SERIES

IN-POOL FURNITURE DESIGNS FROM S.R.SMITH

COLOR & VISUAL TEXTURE OPTIONS

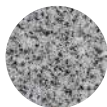
Pool owners with discerning taste will appreciate the subtle yet dramatic impact of color options that incorporate a visual texture.



TAN
-51



GRAY
-52



MONT BLANC
-54



PEBBLE
-55



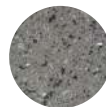
FASHION GRAY
-56



CAPPUCCINO
-57



AUTUMN SUN
-58



STARRY NIGHT
-60



SEASHELL
-61

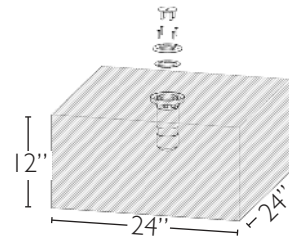
GUNITE NEW CONSTRUCTION

PART #	DESCRIPTION
POOL TABLES	
WS-POOLTABLE-XX-C	30" Round Pool / Spa Table w/ umbrella hole w/ clear cap and 1.90 Bronze Anchor
WS-PT NO ANC-XX-C	30" Round Pool / Spa Table w/umbrella hole w/ clear cap and no Anchor
WS-POOLTABLE-CH-XX-C	30" Round Pool / Spa Table featuring cup holders w/ umbrella hole w/ clear cap and 1.90 Bronze Anchor
WS-PT NO ANC-CH-XX-C	30" Round Pool / Spa Table featuring cup holders w/ umbrella hole w/ clear cap and no Anchor
WS-16 TABLE-XX-C	16" Round Sun Shelf Table w/ umbrella hole w/ clear cap and 1.90 Bronze Anchor
WS-16 NOANC-XX-C	16" Round Sun Shelf Table w/ umbrella hole w/ clear cap and no Anchor



ANCHOR FOR GUNITE POOLS
Tables and seats install in pools w/6" bronze anchor
WS-POOL-ANCHOR

MINIMUM CONCRETE POUR DIMENSIONS



ANCHOR FOR VINYL POOL LINER
Tables and seats install in vinyl liner pools
VL-ANCHOR 1.90

POOL SEATING

WS-POOLSEAT-XX-C	16" Pool / Spa Seat incl. Anchor
WS-PS NOANC-XX-C	16" Pool / Spa Seat no Anchor

GUNITE RETROFIT FOR UMBRELLA ANCHORS*

PART #	DESCRIPTION
POOL TABLES	
PL-30 UMB TABLE-XX	30" Round Sun Shelf Table for umbrella
PL-30 UMB TABLE-CH-XX	30" Round Sun Shelf Table w/ cup holders for umbrella
PL-16 BEV TABLE-XX	16" Round Sun Shelf Table for umbrella

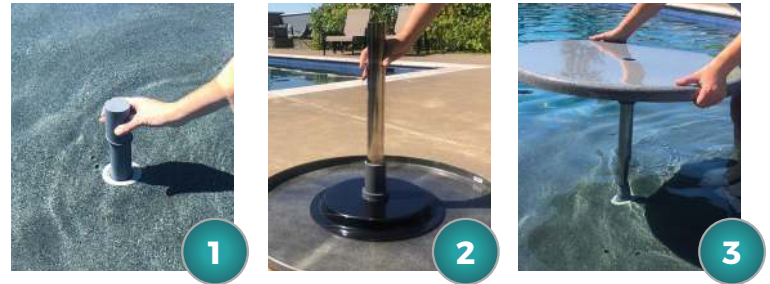
*Retrofit Umbrella Anchor Upgrade Installation Notes: Most common umbrella anchors are typically 1.5" diameter and either 6" or 4" depth. Sun shelf depth typically range from 8" – 14" depth. Confirm the depth of the sun shelf and umbrella anchor and cut support pole as required for specific application.

ANCHORS

PART #	DESCRIPTION
WS-POOL-ANCHOR	6" (1.90) Bronze Anchor w/ Cap
VL-ANCHOR 1.90	6" Vinyl Liner Anchor w/ Cap

RETROFIT SUN SHELF TABLE KITS

Select the 16" or 30" table you want to add to your sun shelf and your kit will come complete with everything you need to retrofit your existing umbrella sleeve. You can upgrade your shade in **3 easy steps!**



*Adapter designed for 7 1/4" anchor sleeves; may be cut down to size for shorter umbrella anchor sleeves.

- 1 - Place adapter into existing anchor*
- 2 - Slide support pole into the table
- 3 - Place table and pole onto adapter and place umbrella in

ADAPTER KITS

PART #	DESCRIPTION
PL-ADAPTER-I	Adapter Kit for 1.5" umbrella sleeve anchor

REPLACE THE **XX** IN THE PART NUMBERS TO INDICATE COLOR CODE WHEN ORDERING.

To ensure you have the most current version of this publication, please visit our website.



S.R.Smith, LLC
Canby, Oregon | 800.824.4387
Tucson, Arizona | 800.737.5386
srsmith.com