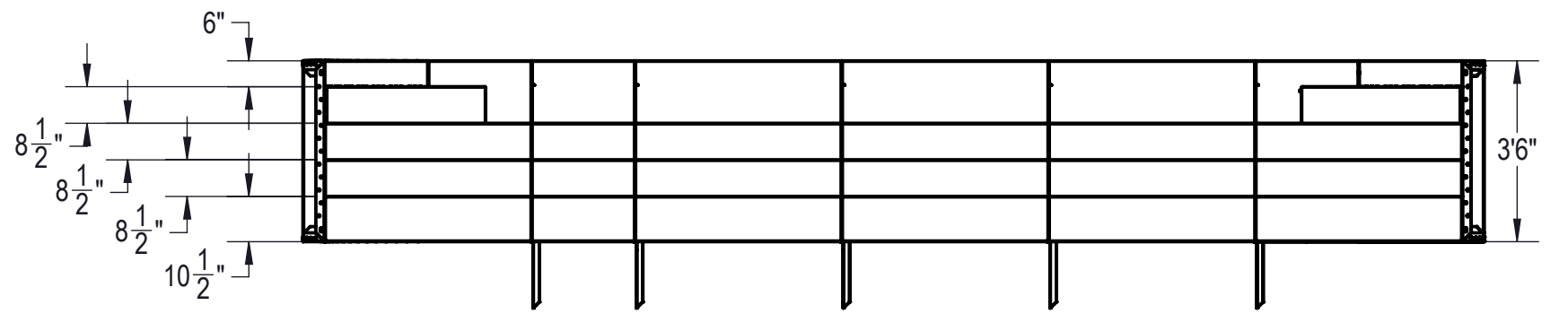
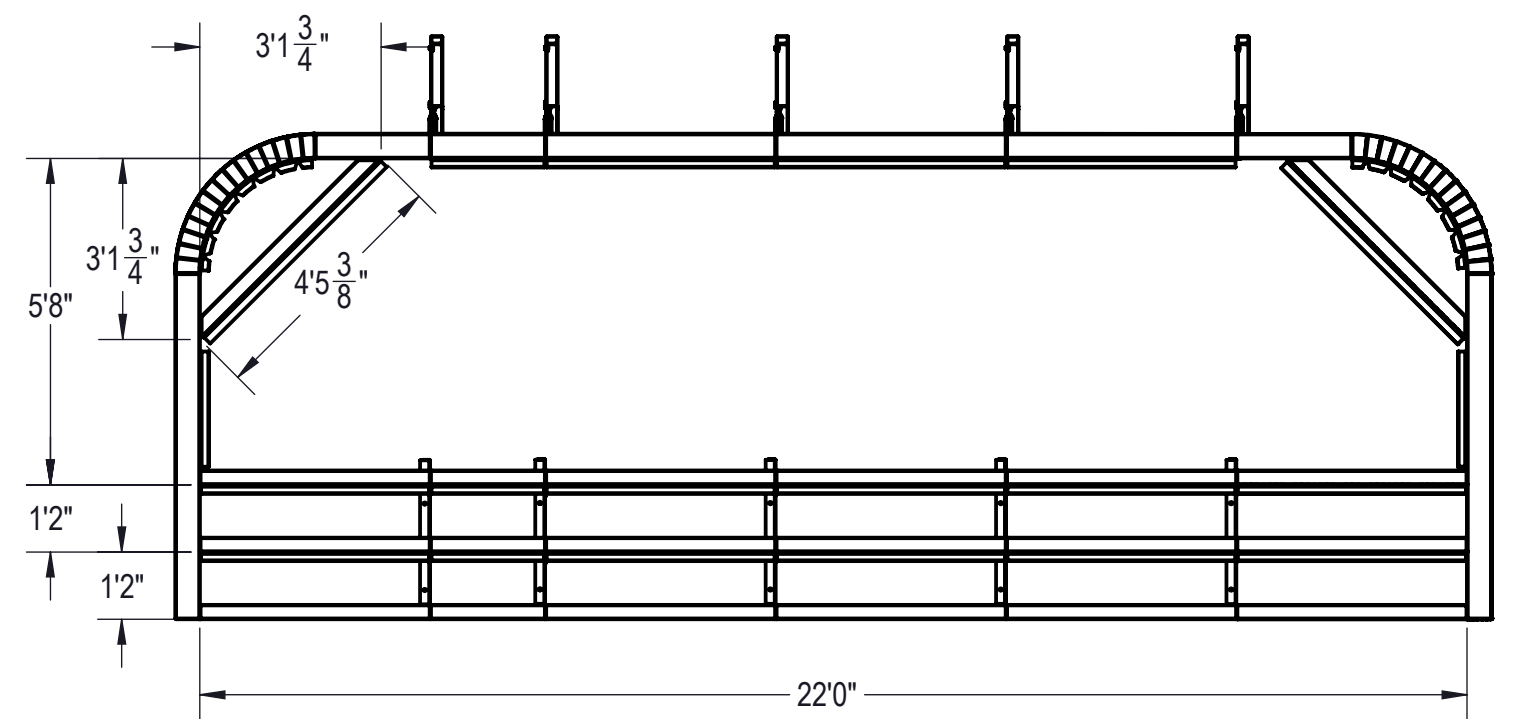
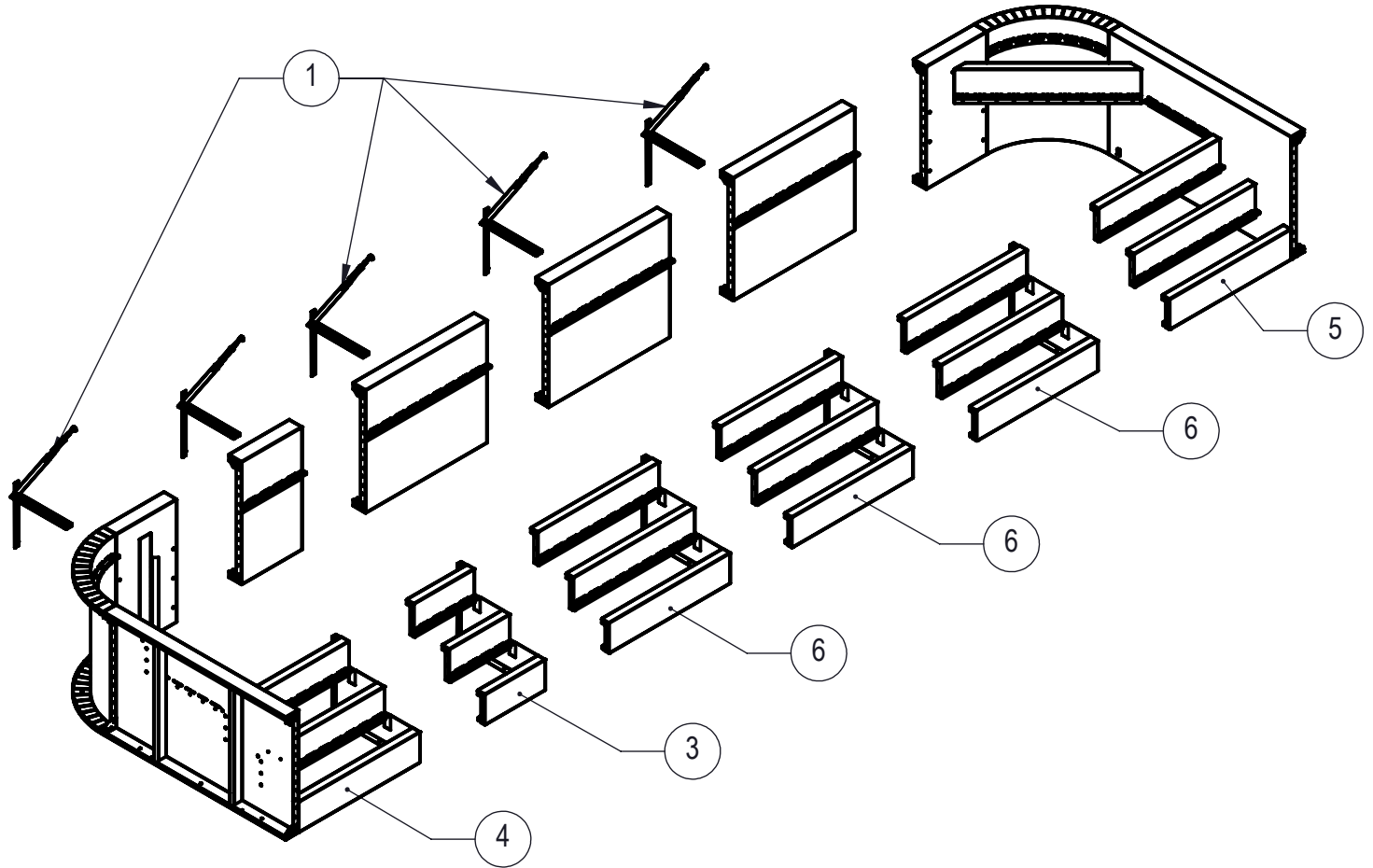


REVISION HISTORY				
REV.	DESCRIPTION	DATE	ECO	BY
A	RELEASED FOR PRODUCTION	2/2/2021		adold



- NOTES:**
- THESE ARE FINISHED DIMENSIONS READY FOR THE LINER.
 - DIMENSIONS ARE FROM INSIDE POOL PANELS.
 - ROPE AND FLOAT ASSEMBLY SHOULD BE INSTALLED IN ACCORDANCE WITH CURRENT ANSII/ASPS/ICC REGULATIONS
 - HYDRA LINER TRACK FOR STEPS IS INSTALLED WITH THE BARB FACING THE RISER WALL ON THE STEP.
- EXCAVATION NOTES:**
- ROUGH EXCAVATION SHOULD BE 2" DEEPER IN EACH INSTANCE.
 - SOIL TO HAVE MINIMUM BEARING CAPACITY OF 1500 PSF.
 - LOCATE TOP OF POOL AT LEAST 6" ABOVE THE SURROUNDING LAND ELEVATION.
 - SEE "OVER DIG DETAIL", IN INSTALLATION MANUAL, FOR EXCAVATION AROUND POOL.
 - FILL VOIDS UNDER BASE OF PANELS AND TAMP WELL.
 - BACK FILL WITH NON-EXPANSIVE MATERIAL.
 - FOLLOW ALL CURRENT ANSI / APSP / ICC GUIDELINES FOR RESIDENTIAL POOLS

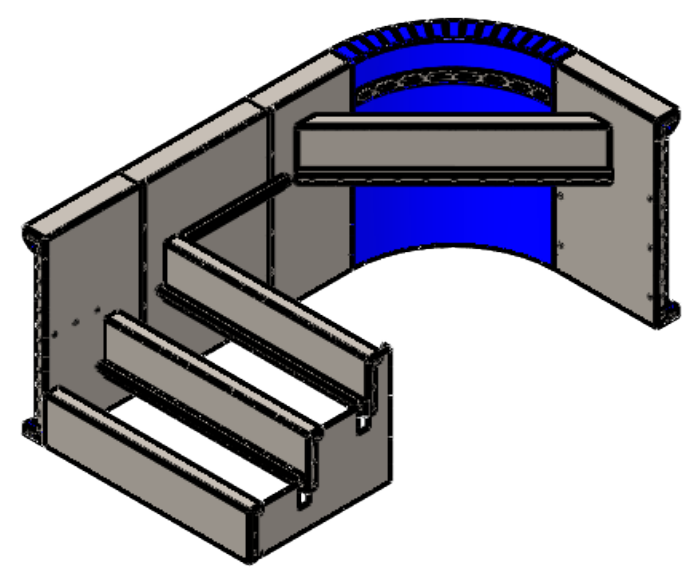
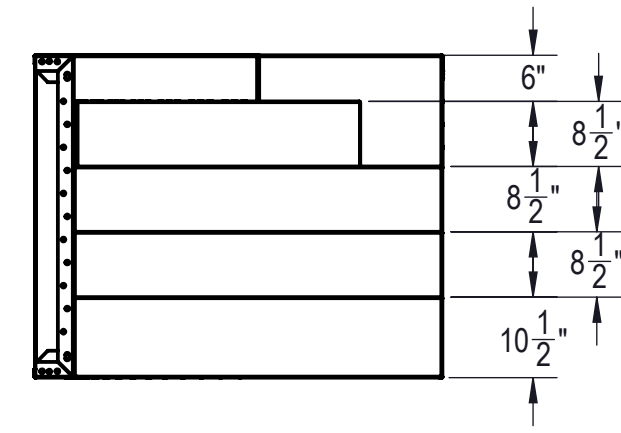
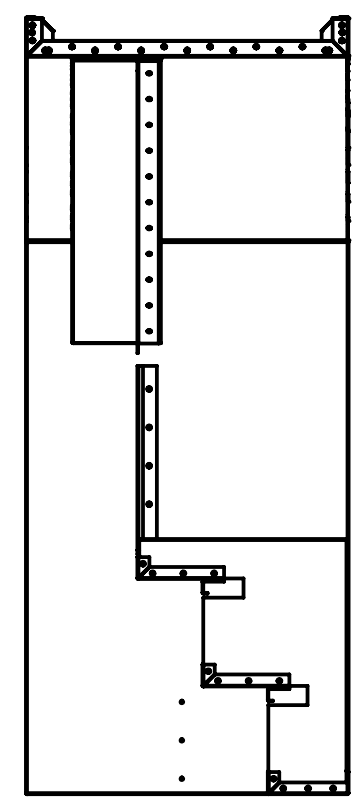
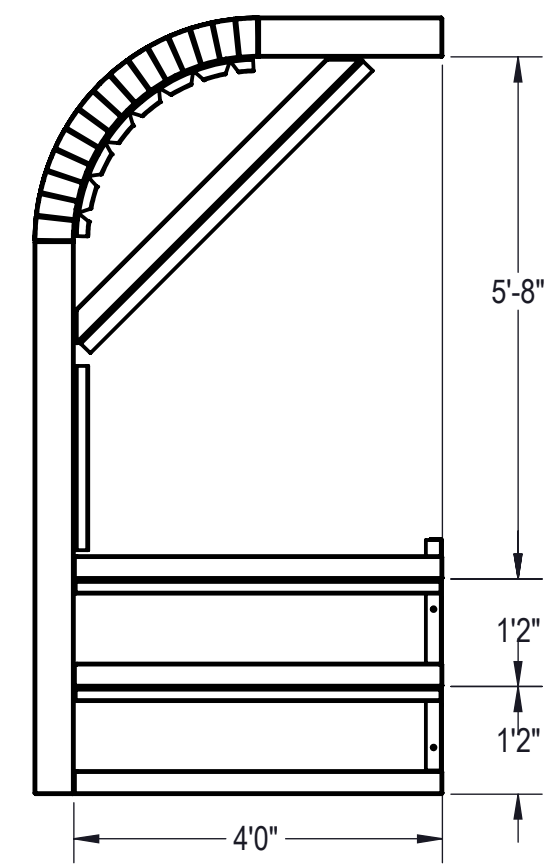
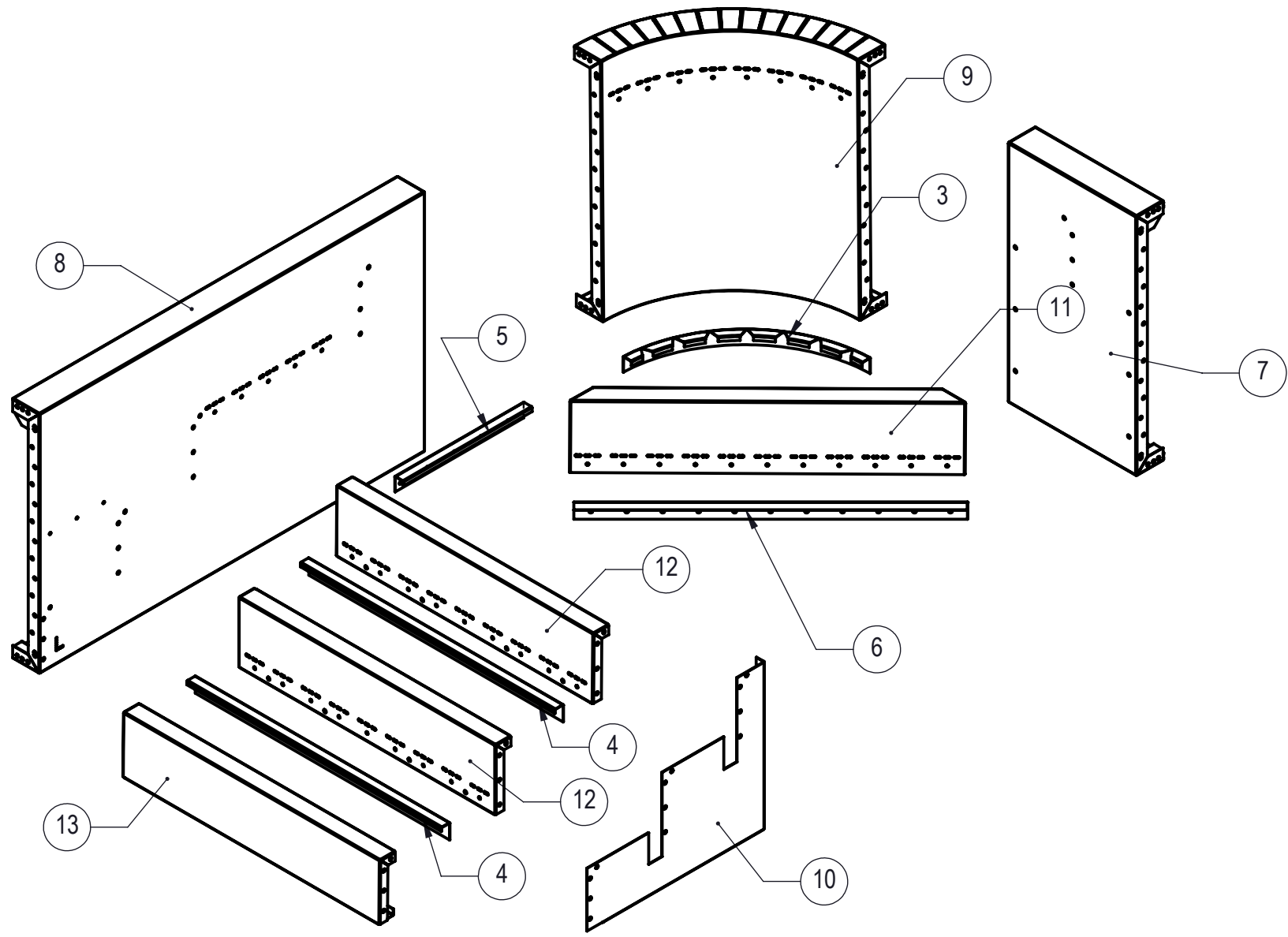
IMPORTANT NOTES:

THIS DOCUMENT IS FOR ILLUSTRATIVE PURPOSES ONLY. THE DEALER OR CONTRACTOR WHO SELLS OR INSTALLS YOUR POOL IS AN INDEPENDENT CONTRACTOR AND IS NOT AN AGENT OF THE MANUFACTURER. THE CONSTRUCTION METHODS ILLUSTRATED HERE ARE SUGGESTIONS AND APPLY ONLY TO NORMAL GROUND CONDITIONS. THERE MAY BE ADDITIONAL PRECAUTIONS AND/OR METHODS OF CONSTRUCTION. PROPER INSTALLATION IS THE RESPONSIBILITY OF THE DEALER/BUILDER/CONTRACTOR.

ITEM	FILE NAME	DESCRIPTION	CUSTOMER DRAWING #	VENDOR PART #	QTY.
1	HPSFOB		HPSFOB		5
2	BOLT_PACK	BOLT, FLANGE, 3/8-16 X 1", PACK (50)	HPS1916	HPS1916	5
3	00034582	STEP, CORNER TOP TREAD, 2" X 8", 6" RADIUS, 4 TREAD, 4 SECTION, OPEN POUR, TANNING LEDGE, SUB ASSEMBLY	HSSM34582	00034582	1
4	00034950	STEP, CORNER TOP TREAD, 4" X 8", 2" RADIUS, 4 TREAD, LEFT, OPEN POUR, TANNING LEDGE, SUB ASSEMBLY	HSSM34950	HSSM34950	1
5	00034990	STEP, CORNER TOP TREAD, 4" X 8", 2" RADIUS, 4 TREAD, RIGHT, OPEN POUR, TANNING LEDGE, SUB ASSEMBLY	HSSM34990	00034990	1
6	00034420	STEP, CORNER TOP TREAD, 4" X 8", 6" RADIUS, 4 TREAD, 4 SECTION, OPEN POUR, TANNING LEDGE, SUB ASSEMBLY	HSSM34420	00034420	3

ENGINEERING DRAWING NUMBER 00035014	WEIGHT: lbs	UNLESS OTHERWISE SPECIFIED DIMENSIONS ARE IN INCHES TOLERANCES DECIMALS: X ± XX ± XXX ± XXXX ± ANGULAR: X ± 0.5 THIRD ANGLE PROJECTION	DESIGNED BY: ADOLD	CREATION DATE: 2/1/2021	SAMSON STEEL
	VOLUME: Inch ³		DETAILED BY: adold	DETAILED DATE: 2/2/2021	
	COLOR:		LAST REVISED BY: adold	LAST REVISED DATE: 2/2/2021	
	HEAT TREAT:		MATERIAL:		
FINISH:				HSS35014	
TEXTURE:					
			PART NUMBER:		SCALE: 1:32 SHEET: 1 OF 5
					B

REVISION HISTORY				
REV.	DESCRIPTION	DATE	ECO	BY
A	RELEASED FOR PRODUCTION	12/22/2020		adold



NOTES:

- THESE ARE FINISHED DIMENSIONS READY FOR THE LINER.
- DIMENSIONS ARE FROM INSIDE POOL PANELS.
- ROPE AND FLOAT ASSEMBLY SHOULD BE INSTALLED IN ACCORDANCE WITH CURRENT ANSI/ASPS/ICC REGULATIONS
- HYDRA LINER TRACK FOR STEPS IS INSTALLED WITH THE BARB FACING THE RISER WALL ON THE STEP.

EXCAVATION NOTES:

- ROUGH EXCAVATION SHOULD BE 2" DEEPER IN EACH INSTANCE.
- SOIL TO HAVE MINIMUM BEARING CAPACITY OF 1500 PSF.
- LOCATE TOP OF POOL AT LEAST 6" ABOVE THE SURROUNDING LAND ELEVATION.
- SEE "OVER DIG DETAIL" FOR EXCAVATION AROUND POOL.
- FILL VOIDS UNDER BASE OF PANELS AND TAMP WELL.
- BACK FILL WITH NON-EXPANSIVE MATERIAL.
- FOLLOW ALL CURRENT ANSI / A/SPS / ICC GUIDELINES FOR RESIDENTIAL POOLS

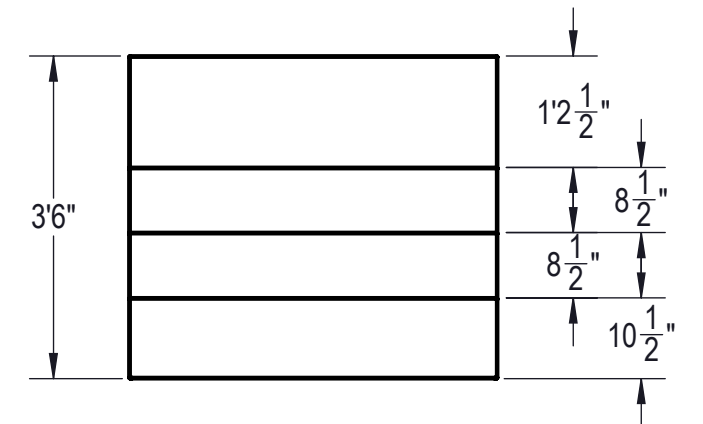
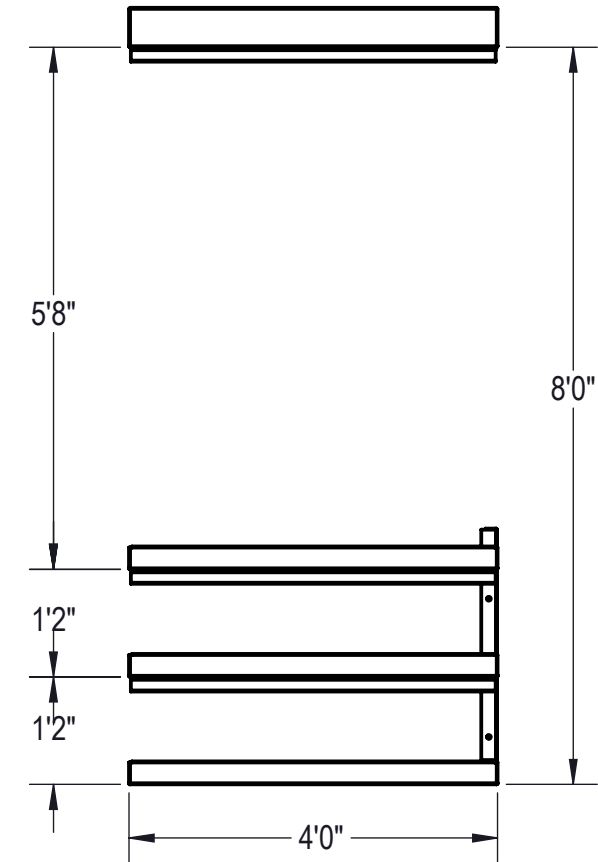
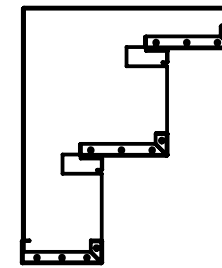
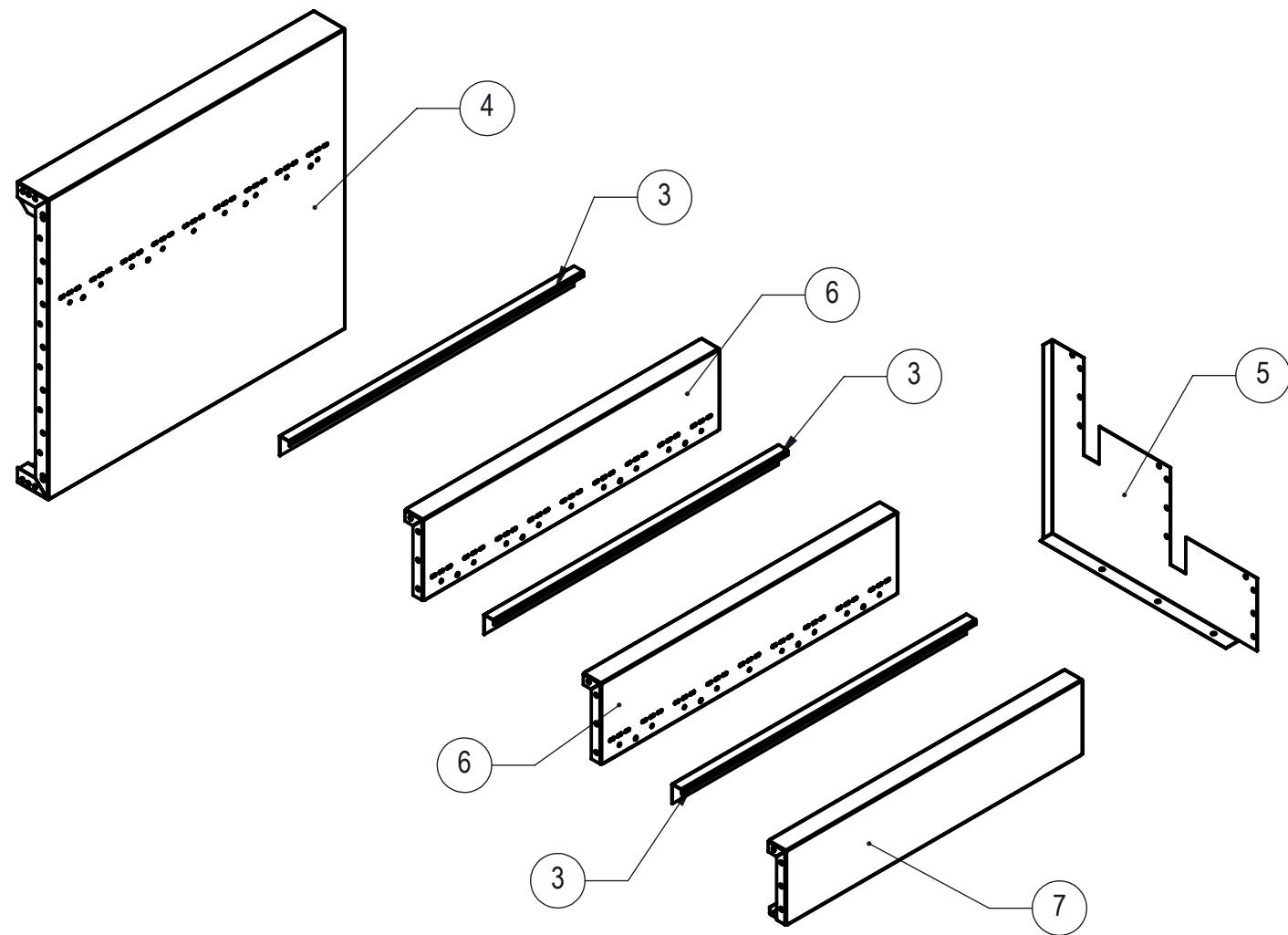
IMPORTANT NOTES:

THIS DOCUMENT IS FOR ILLUSTRATIVE PURPOSES ONLY. THE DEALER OR CONTRACTOR WHO SELLS OR INSTALLS YOUR POOL IS AN INDEPENDENT CONTRACTOR AND IS NOT AN AGENT OF THE MANUFACTURER. THE CONSTRUCTION METHODS ILLUSTRATED HERE ARE SUGGESTIONS AND APPLY ONLY TO NORMAL GROUND CONDITIONS. THERE MAY BE ADDITIONAL PRECAUTIONS AND/OR METHODS OF CONSTRUCTION. PROPER INSTALLATION IS THE RESPONSIBILITY OF THE DEALER/BUILDER/CONTRACTOR.

ITEM	FILE NAME	DESCRIPTION	CUSTOMER DRAWING #	VENDOR PART #	QTY.
1	BOLT, PACK	BOLT, FLANGE, 3/8-16 X 1", PACK (50)	HPS1916	HPS1916	2
2	SBRACE	BRACE, FOLD OVER WITH TURNBUCKLE, STEEL, HPSFOB	HPSFOB	HPSFOB	1
3	00017208	LINER TRACK, 2' RADIUS, RIGHT OR LEFT	00017208	00017208	1
4	00017122	LINER TRACK, OPEN POUR	00017122	00017122	2
5	00034424	LINER TRACK, RIGHT OR LEFT, 28"	00034434	00034434	1
6	00028269	LINER TRACK, TREAD "B"	00028269	00028269	1
7	00034953	PANEL BACK, 2' LONG, 4' TREAD, OPEN POUR, TANNING LEDGE, LEFT ASSEMBLY	00034953	00034953	1
8	00034948	PANEL, STEP, 4' TREAD, CORNER TOP TREAD, TANNING LEDGE, LEFT SIDE, OPEN POUR, ASSEMBLY	00034948	00034948	1
9	00034952	PANEL, 2' RADIUS, 4' TREAD, OPEN POUR, TANNING LEDGE	00034952	00034952	1
10	00034413	SUPPORT, CENTER, 4' TREAD, OPEN POUR	00034413	00034413	1
11	00034425	TREAD, STEP, 4' TREAD, CORNER, TREAD "A", OPEN POUR	00034425	00034425	1
12	00034411	TREAD, STEP, 4' TREAD, OPEN POUR, "B", 4"	00034411	00034411	2
13	00034412	TREAD, STEP, 4' TREAD, OPEN POUR, "C", 4' LONG	00034412	00034412	1

REVISIONS DRAWING NUMBER 00034950	WEIGHT: lbs	UNLESS OTHERWISE SPECIFIED DIMENSIONS ARE IN INCHES TOLERANCES DECIMALS: X ± XX ± XXX ± XXXX ± ANGLAR: X ± 0.5 THIRD ANGLE PROJECTION 	DESIGNED BY: ADOLD	CREATION DATE: 1/9/2018	SAMSON STEEL	
	VOLUME: Inch ³		DETAILED DATE: 2/2/2021			
	COLOR: NA		LAST REVISED DATE: 2/2/2021			
	HEAT TREAT: NA		MATERIAL:			
FINISH: NA	TITLE: STEP, CORNER TOP TREAD, 4' X 8', 2' RADIUS, 4 TREAD, LEFT, OPEN POUR, TANNING LEDGE, SUB ASSEMBLY		PART NUMBER: HSSM34950		SCALE: 1:32	SIZE: B
TEXTURE: 576			SHEET: 2 OF 5			

REVISION HISTORY				
REV.	DESCRIPTION	DATE	ECO	BY
A	RELEASED FOR PRODUCTION	12/22/2020		adold



NOTES:

- THESE ARE FINISHED DIMENSIONS READY FOR THE LINER.
- DIMENSIONS ARE FROM INSIDE POOL PANELS.
- ROPE AND FLOAT ASSEMBLY SHOULD BE INSTALLED IN ACCORDANCE WITH CURRENT ANSI/ASPS/ICC REGULATIONS
- HYDRA LINER TRACK FOR STEPS IS INSTALLED WITH THE BARB FACING THE RISER WALL ON THE STEP.

EXCAVATION NOTES:

- ROUGH EXCAVATION SHOULD BE 2" DEEPER IN EACH INSTANCE.
- SOIL TO HAVE MINIMUM BEARING CAPACITY OF 1500 PSF.
- LOCATE TOP OF POOL AT LEAST 6" ABOVE THE SURROUNDING LAND ELEVATION.
- SEE "OVER DIG DETAIL", IN INSTALLATION MANUAL, FOR EXCAVATION AROUND POOL.
- FILL VOIDS UNDER BASE OF PANELS AND TAMP WELL.
- BACK FILL WITH NON-EXPANSIVE MATERIAL.
- FOLLOW ALL CURRENT ANSI / APSP / ICC GUIDELINES FOR RESIDENTIAL POOLS

IMPORTANT NOTES:

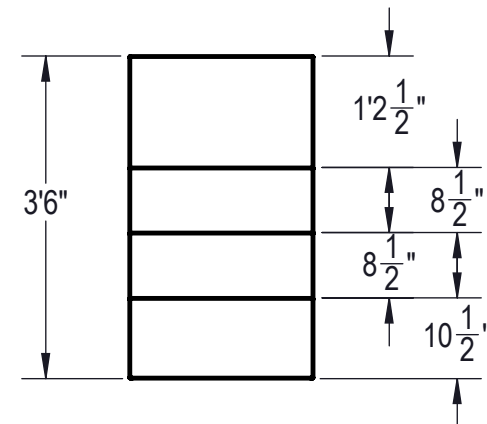
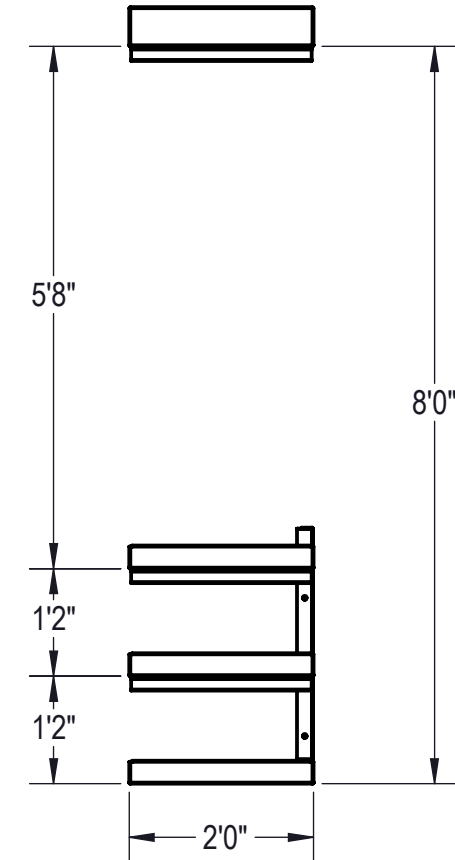
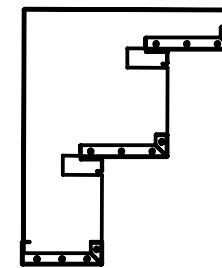
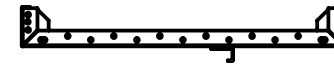
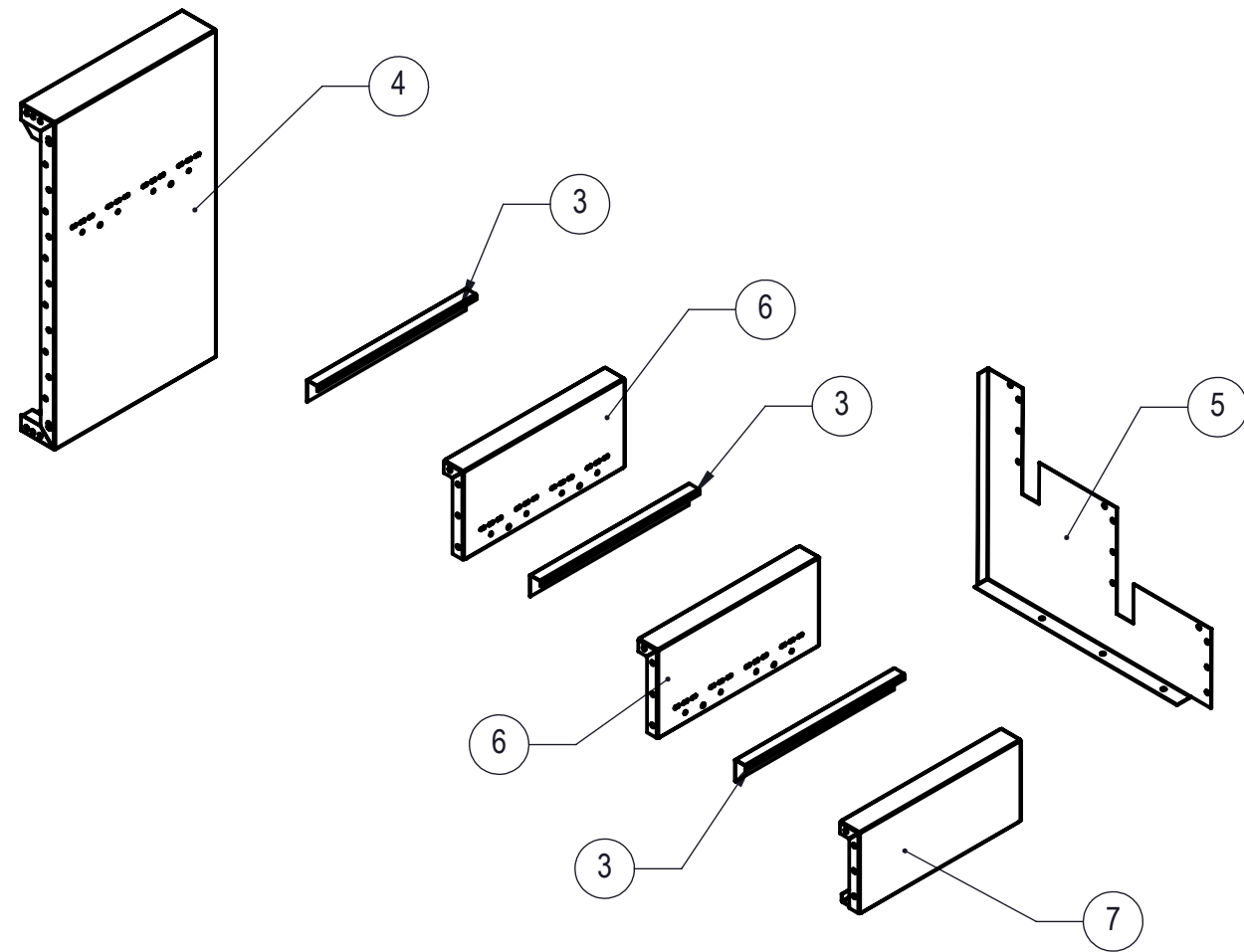
THIS DOCUMENT IS FOR ILLUSTRATIVE PURPOSES ONLY. THE DEALER OR CONTRACTOR WHO SELLS OR INSTALLS YOUR POOL IS AN INDEPENDENT CONTRACTOR AND IS NOT AN AGENT OF THE MANUFACTURER. THE CONSTRUCTION METHODS ILLUSTRATED HERE ARE SUGGESTIONS AND APPLY ONLY TO NORMAL GROUND CONDITIONS. THERE MAY BE ADDITIONAL PRECAUTIONS AND/OR METHODS OF CONSTRUCTION. PROPER INSTALLATION IS THE RESPONSIBILITY OF THE DEALER/BUILDER/CONTRACTOR.

ITEM	FILE NAME	DESCRIPTION	CUSTOMER DRAWING #	VENDOR PART #	QTY.
1	BOLT, PACK	BOLT, FLANGE, 3/8-16 X 1", PACK (50)	HPS1916	HPS1916	2
2	SBRACE	BRACE, FOLD OVER WITH TURNBUCKLE, STEEL, HPSFOB	HPSFOB	HPSFOB	1
3	00017122	LINER TRACK, OPEN POUR	00017122	00017122	3
4	00034441	PANEL BACK, 4' LONG, 4 TREAD, OPEN POUR, TANNING LEDGE ASSEMBLY	00034441	00034418	1
5	00034413	SUPPORT, CENTER, 4 TREAD, OPEN POUR	00034413	00034413	1
6	00034411	TREAD, STEP, 4 TREAD, OPEN POUR, "B", 4'	00034411	00034411	2
7	00034412	TREAD, STEP, 4 TREAD, OPEN POUR, "C", 4' LONG	00034412	00034412	1

ENGINEERING DRAWING NUMBER 00034420	WEIGHT: lbs	UNLESS OTHERWISE SPECIFIED DIMENSIONS ARE IN INCHES TOLERANCES DECIMALS: X ± XX ± XXX ± XXXX ± ANGULAR: X ± 0.5 THIRD ANGLE PROJECTION	DESIGNED BY: ADOLD	CREATION DATE: 1/9/2018	SAMSON STEEL
	VOLUME: Inch ³		DETAILED BY: adold	DETAILED DATE: 2/2/2021	
	COLOR: NA		LAST REVISED BY: adold	LAST REVISED DATE: 1/8/2021	
	HEAT TREAT: NA		MATERIAL:		
FINISH: NA					TITLE: STEP, CORNER TOP TREAD, 4' X 8', 6" RADIUS, 4 TREAD, 4' SECTION, OPEN POUR, TANNING LEDGE, SUB ASSEMBLY
TEXTURE: 576					PART NUMBER: HSSM34420
					SCALE: 1:32 SHEET: 3 OF 5 SIZE: B

CHECK IN DATE/TIME: Friday, January 08, 2021 11:02:51 AM

REVISION HISTORY				
REV.	DESCRIPTION	DATE	ECO	BY
A	RELEASED FOR PRODUCTION	1/8/2021		adold



NOTES:

- THESE ARE FINISHED DIMENSIONS READY FOR THE LINER.
- DIMENSIONS ARE FROM INSIDE POOL PANELS.
- ROPE AND FLOAT ASSEMBLY SHOULD BE INSTALLED IN ACCORDANCE WITH CURRENT ANSI/APSP/ICC REGULATIONS
- HYDRA LINER TRACK FOR STEPS IS INSTALLED WITH THE BARB FACING THE RISER WALL ON THE STEP.

EXCAVATION NOTES:

- ROUGH EXCAVATION SHOULD BE 2" DEEPER IN EACH INSTANCE.
- SOIL TO HAVE MINIMUM BEARING CAPACITY OF 1500 PSF.
- LOCATE TOP OF POOL AT LEAST 6" ABOVE THE SURROUNDING LAND ELEVATION.
- SEE "OVER DIG DETAIL", IN INSTALLATION MANUAL, FOR EXCAVATION AROUND POOL.
- FILL VOIDS UNDER BASE OF PANELS AND TAMP WELL.
- BACK FILL WITH NON-EXPANSIVE MATERIAL.
- FOLLOW ALL CURRENT ANSI / APSP / ICC GUIDELINES FOR RESIDENTIAL POOLS

IMPORTANT NOTES:

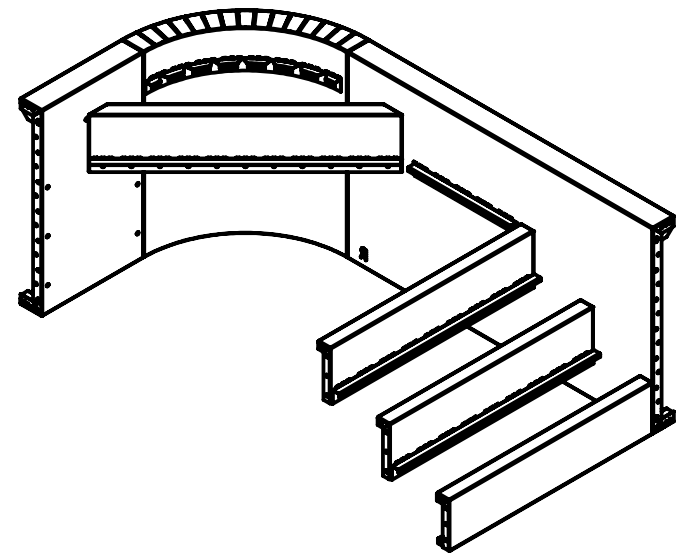
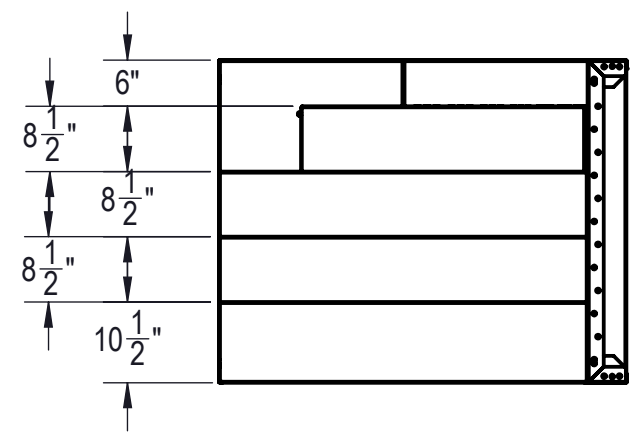
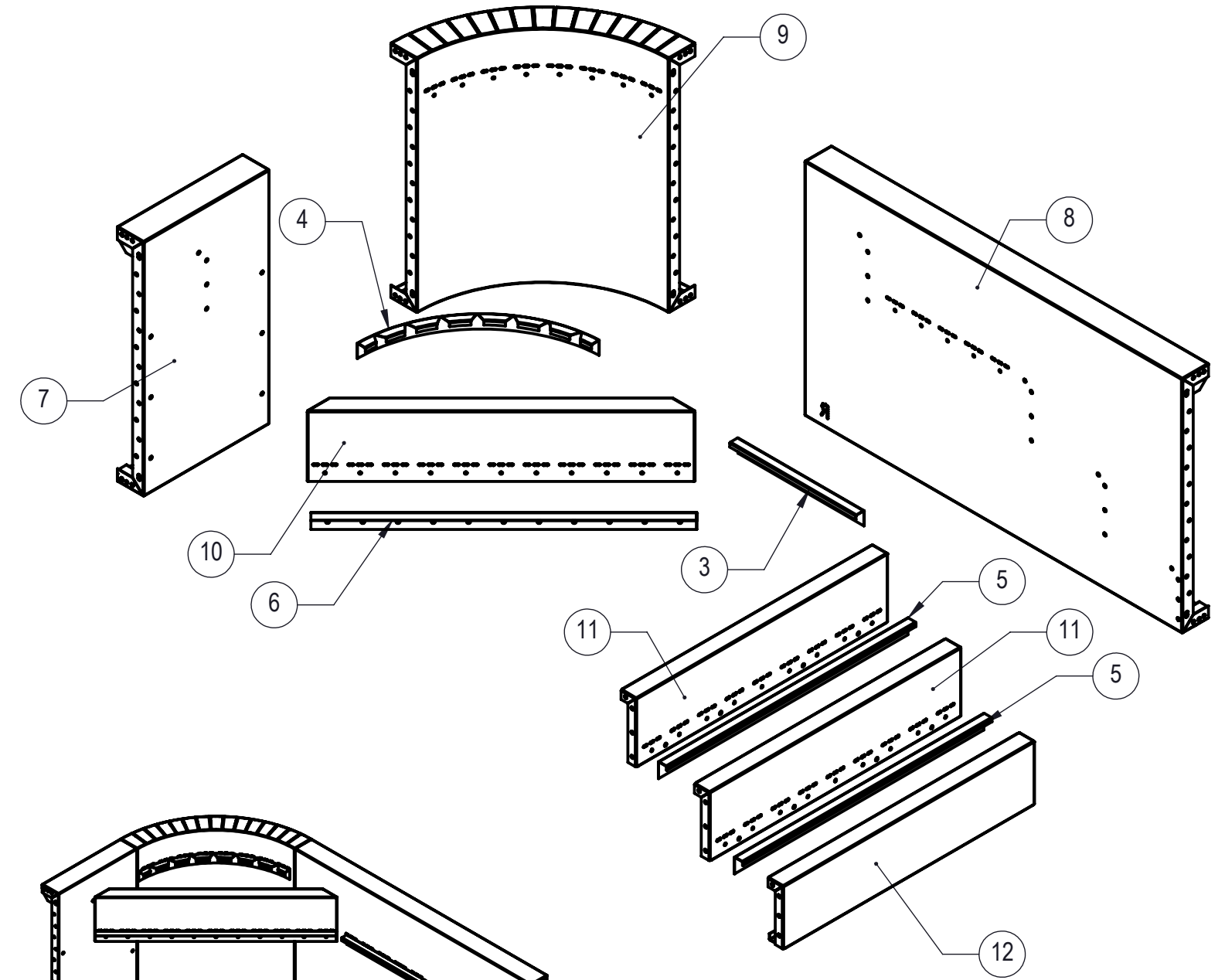
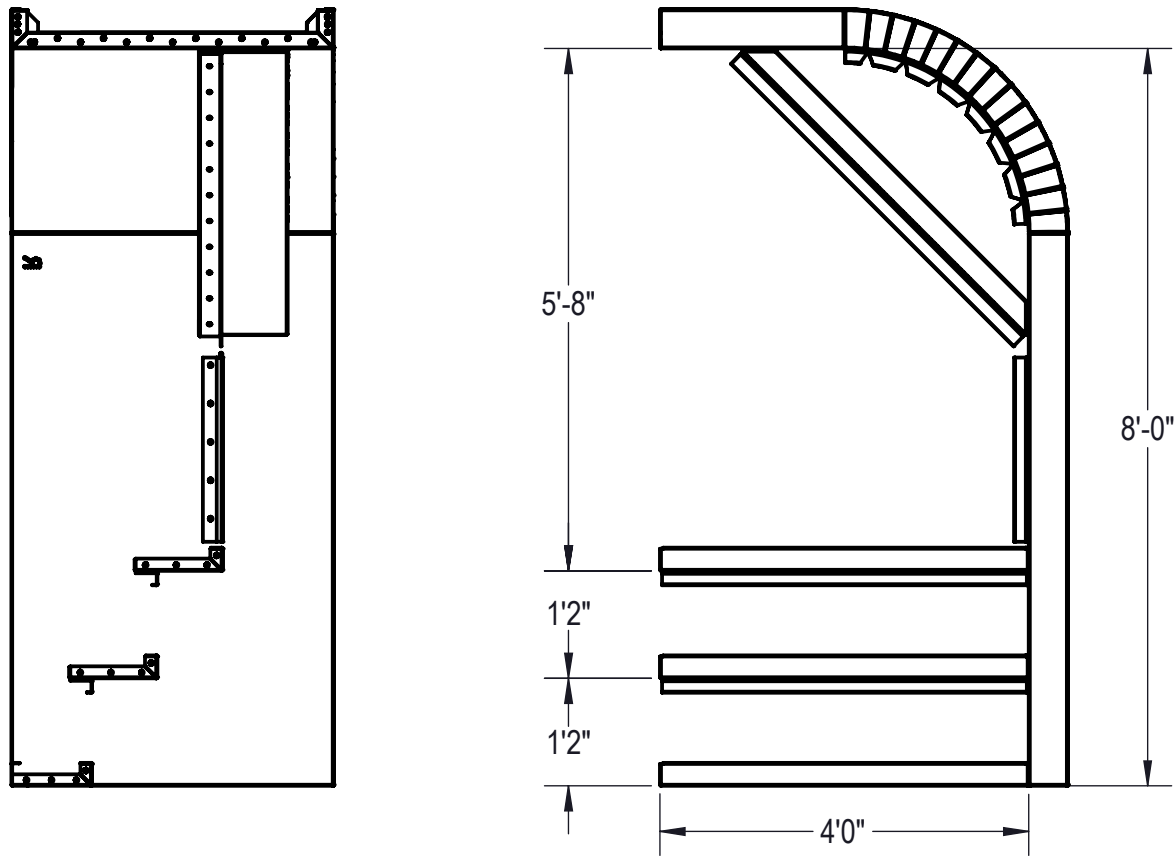
THIS DOCUMENT IS FOR ILLUSTRATIVE PURPOSES ONLY. THE DEALER OR CONTRACTOR WHO SELLS OR INSTALLS YOUR POOL IS AN INDEPENDENT CONTRACTOR AND IS NOT AN AGENT OF THE MANUFACTURER. THE CONSTRUCTION METHODS ILLUSTRATED HERE ARE SUGGESTIONS AND APPLY ONLY TO NORMAL GROUND CONDITIONS. THERE MAY BE ADDITIONAL PRECAUTIONS AND/OR METHODS OF CONSTRUCTION. PROPER INSTALLATION IS THE RESPONSIBILITY OF THE DEALER/BUILDER/CONTRACTOR.

ITEM	FILE NAME	DESCRIPTION	CUSTOMER DRAWING #	VENDOR PART #	QTY.
1	BOLT, PACK	BOLT, FLANGE, 3/8-16 X 1", PACK (50)	HPS1916	HPS1916	2
2	SBRACE	BRACE, FOLD OVER WITH TURNBUCKLE, STEEL, HPSFOB	HPSFOB	HPSFOB	1
3	00013551	LINER TRACK, BACK, FITS 13547	00013551	00013551	3
4	00034577	PANEL BACK, 2' LONG, 4' TREAD, OPEN POUR, CORNER FIRST TREAD, TANNING LEDGE, ASSEMBLY			1
5	00034413	SUPPORT, CENTER, 4 TREAD, OPEN POUR	00034413	00034413	1
6	00034579	TREAD, STEP, 4 TREAD, OPEN POUR, "B", 2'	00034579	00034579	2
7	00034581	TREAD, STEP, 4 TREAD, OPEN POUR, "C", 2' LONG	00034581	00034581	1

ENGINEERING DRAWING NUMBER 00034582	WEIGHT: lbs	UNLESS OTHERWISE SPECIFIED DIMENSIONS ARE IN INCHES TOLERANCES DECIMALS: X ± XX ± XXX ± XXXX ± ANGULAR: X ± 0.5 THIRD ANGLE PROJECTION 	DESIGNED BY: ADOLD	CREATION DATE: 1/9/2018	SAMSON STEEL
	VOLUME: Inch ³		DETAILED BY: adold	DETAILED DATE: 2/2/2021	
	COLOR: NA		LAST REVISED BY: adold	LAST REVISED DATE: 1/8/2021	
	HEAT TREAT: NA		MATERIAL:		
FINISH: NA	PART NUMBER: HSSM34582		SCALE: 1:32	SIZE: B	
TEXTURE: 576	SHEET: 4 OF 5				

REVISION HISTORY				
REV.	DESCRIPTION	DATE	ECO	BY
A	RELEASED FOR PRODUCTION	1/5/2021		adold

DRAWING NUMBER: 00034990
DATE: 1/5/2021
TIME: 11:18:22 AM



- NOTES:**
- THESE ARE FINISHED DIMENSIONS READY FOR THE LINER.
 - DIMENSIONS ARE FROM INSIDE POOL PANELS.
 - ROPE AND FLOAT ASSEMBLY SHOULD BE INSTALLED IN ACCORDANCE WITH CURRENT ANSI/ASPS/ICC REGULATIONS
 - HYDRA LINER TRACK FOR STEPS IS INSTALLED WITH THE BARB FACING THE RISER WALL ON THE STEP.
- EXCAVATION NOTES:**
- ROUGH EXCAVATION SHOULD BE 2" DEEPER IN EACH INSTANCE.
 - SOIL TO HAVE MINIMUM BEARING CAPACITY OF 1500 PSF.
 - LOCATE TOP OF POOL AT LEAST 6" ABOVE THE SURROUNDING LAND ELEVATION.
 - SEE "OVER DIG DETAIL" FOR EXCAVATION AROUND POOL.
 - FILL VOIDS UNDER BASE OF PANELS AND TAMP WELL.
 - BACK FILL WITH NON-EXPANSIVE MATERIAL.
 - FOLLOW ALL CURRENT ANSI / APSP / ICC GUIDELINES FOR RESIDENTIAL POOLS

IMPORTANT NOTES:

THIS DOCUMENT IS FOR ILLUSTRATIVE PURPOSES ONLY. THE DEALER OR CONTRACTOR WHO SELLS OR INSTALLS YOUR POOL IS AN INDEPENDENT CONTRACTOR AND IS NOT AN AGENT OF THE MANUFACTURER. THE CONSTRUCTION METHODS ILLUSTRATED HERE ARE SUGGESTIONS AND APPLY ONLY TO NORMAL GROUND CONDITIONS. THERE MAY BE ADDITIONAL PRECAUTIONS AND/OR METHODS OF CONSTRUCTION. PROPER INSTALLATION IS THE RESPONSIBILITY OF THE DEALER/BUILDER/CONTRACTOR.

ITEM	FILE NAME	DESCRIPTION	CUSTOMER DRAWING #	VENDOR PART #	QTY.
1		BOLT, FLANGE, 3/8-16 X 1", PACK (50)	HPS1916	HPS1916	2
2		SBRACE	HPSFOB	HPSFOB	1
3	00034424	LINER TRACK, RIGHT OR LEFT, 28"	00034434	00034434	1
4	00017208	LINER TRACK, 2' RADIUS, RIGHT OR LEFT	00017208	00017208	1
5	00017122	LINER TRACK, OPEN POUR	00017122	00017122	2
6	00028269	LINER TRACK, TREAD "B"	00028269	00028269	1
7	00034987	PANEL BACK, 4' TREAD, 4' TREAD, OPEN POUR, TANNING LEDGE ASSEMBLY	00034987	00034953	1
8	00034988	PANEL STEP, 4' TREAD, CORNER TOP TREAD, TANNING LEDGE, RIGHT SIDE, OPEN POUR ASSEMBLY	00034988	00034988	1
9	00034952	PANEL, 2' RADIUS, 4' TREAD, OPEN POUR, TANNING LEDGE	00034952	00034952	1
10	00034425	TREAD, STEP, 4' TREAD, CORNER, TREAD "A", OPEN POUR	00034425	00034425	1
11	00034411	TREAD, STEP, 4' TREAD, OPEN POUR, "B", 4'	00034411	00034411	2
12	00034412	TREAD, STEP, 4' TREAD, OPEN POUR, "C", 4' LONG	00034412	00034412	1

DRAWING NUMBER: 00034990	WEIGHT: lbs	UNLESS OTHERWISE SPECIFIED	DESIGNED BY: ADOLD	CREATION DATE: 1/9/2018	SAMSON STEEL	
	VOLUME: Inch ³		DIMENSIONS ARE IN INCHES	DETAILED DATE: 2/2/2021		
	COLOR: NA		TOLERANCES DECIMALS: X ±, XX ±, XXX ±, XXXX ±	LAST REVISED BY: adold		LAST REVISED DATE: 2/2/2021
	HEAT TREAT: NA		ANGULAR: X ± 0.5	MATERIAL:		
FINISH: NA	THIRD ANGLE PROJECTION			HSSM34990		
TEXTURE: 576						
				PART NUMBER:	SCALE: 1:32	
				SHEET: 5 OF 5		
				B		