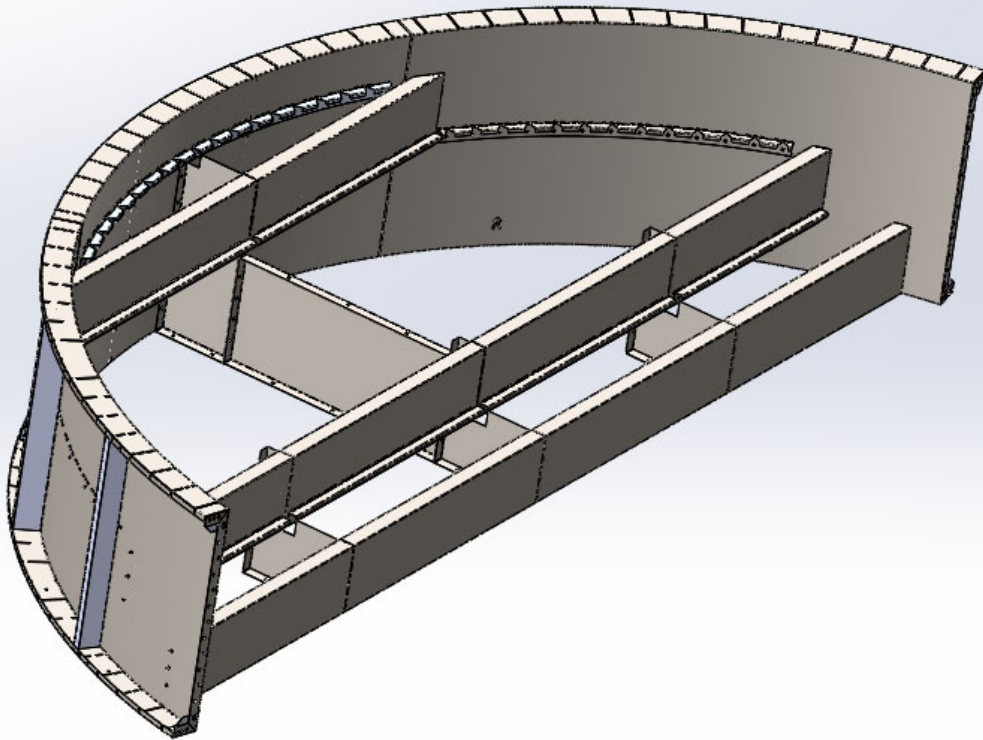
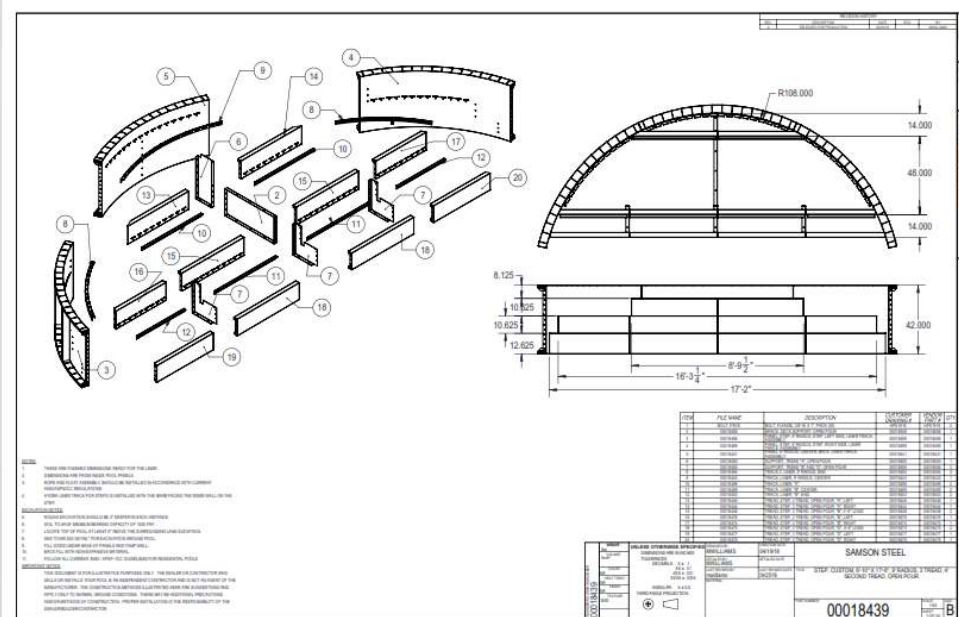


# HYDRA POOLS

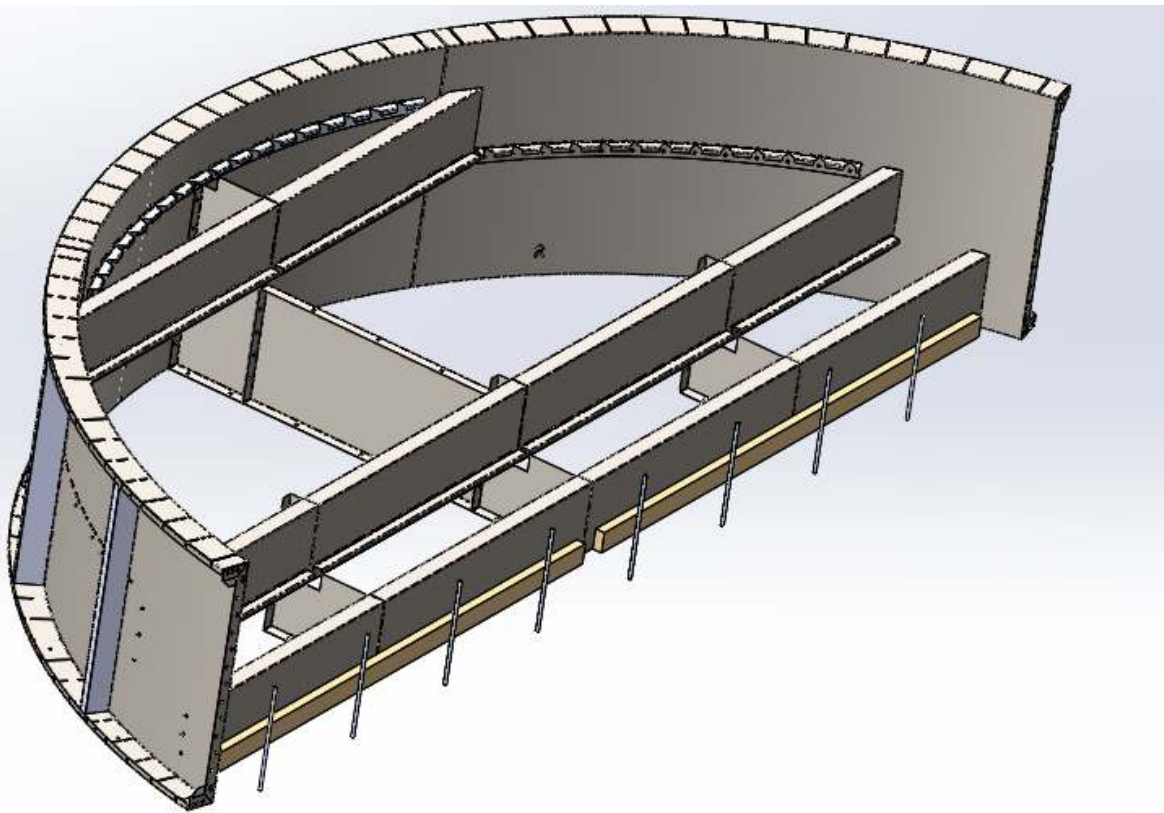
## OPEN POUR STEP AND BENCH INSTALLATION MANUAL



Check your step drawing to make sure you have all the components and it has been assembled to the listed dimensions.

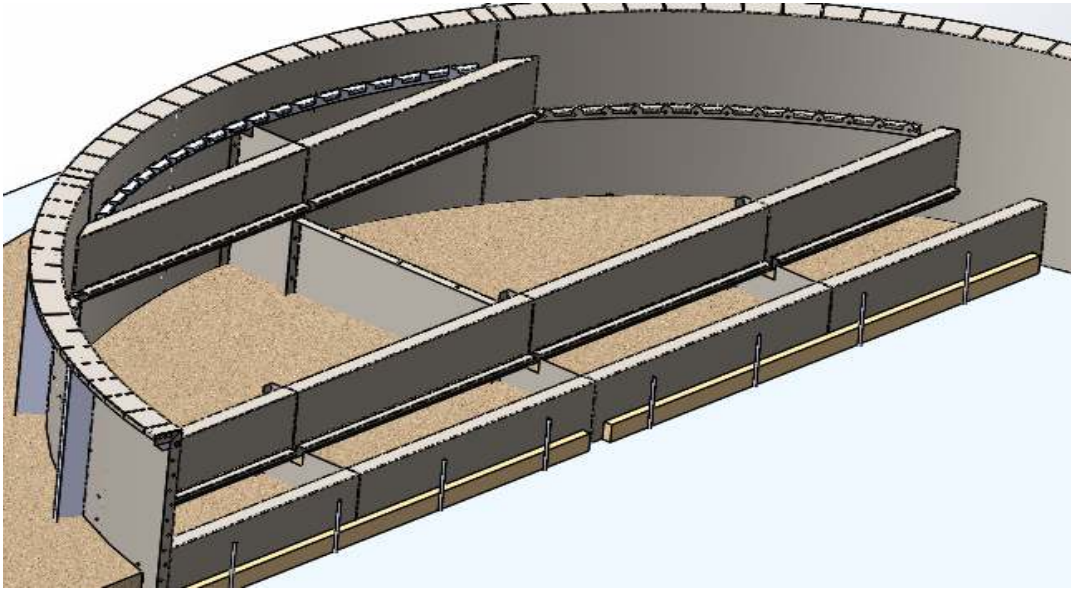


Before pouring concrete in the base of the step place 2 x 4's across the face of the bottom riser and stake with rebar.

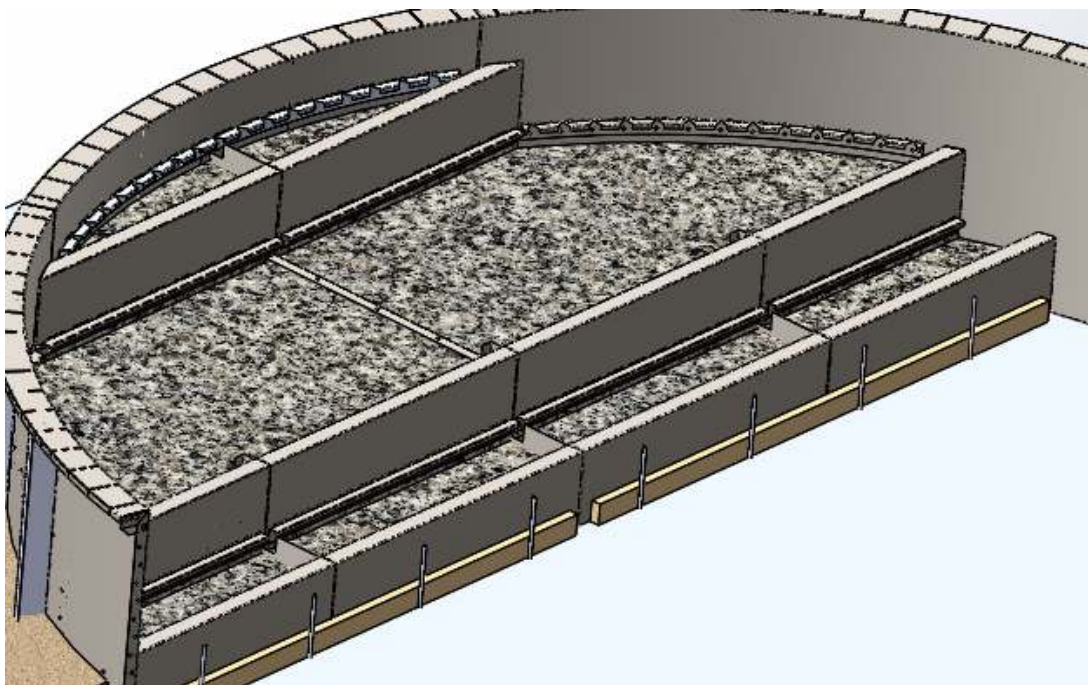


At this point it is best to tape the top and bottom of the liner track to prevent fines or concrete from entering the gap.

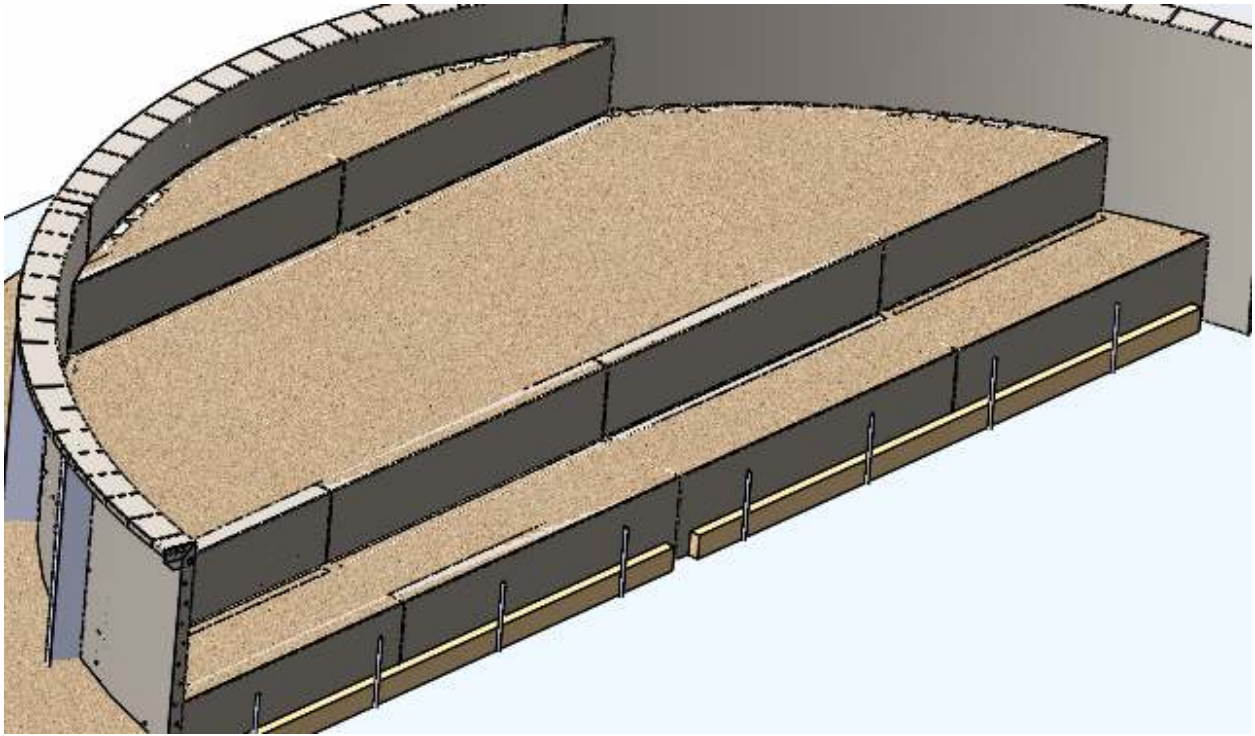
It is easiest to pour the inside of the step at the same time as you pour your collar around the entire pool. The concrete in the bottom of the step should be 4" ±. You can add reinforcing wire or rebar if your soil conditions require it.



Once the concrete base is hardened add #57 gravel (or other non-compressible backfill) up to within 4" ± of each tread.



Pour 4" of concrete on each level tread. Screed it off level with the liner tracks and top of treads.



When the concrete is hardened peel off the tape that was placed on the top side of the liner track and make sure everything is smooth.

