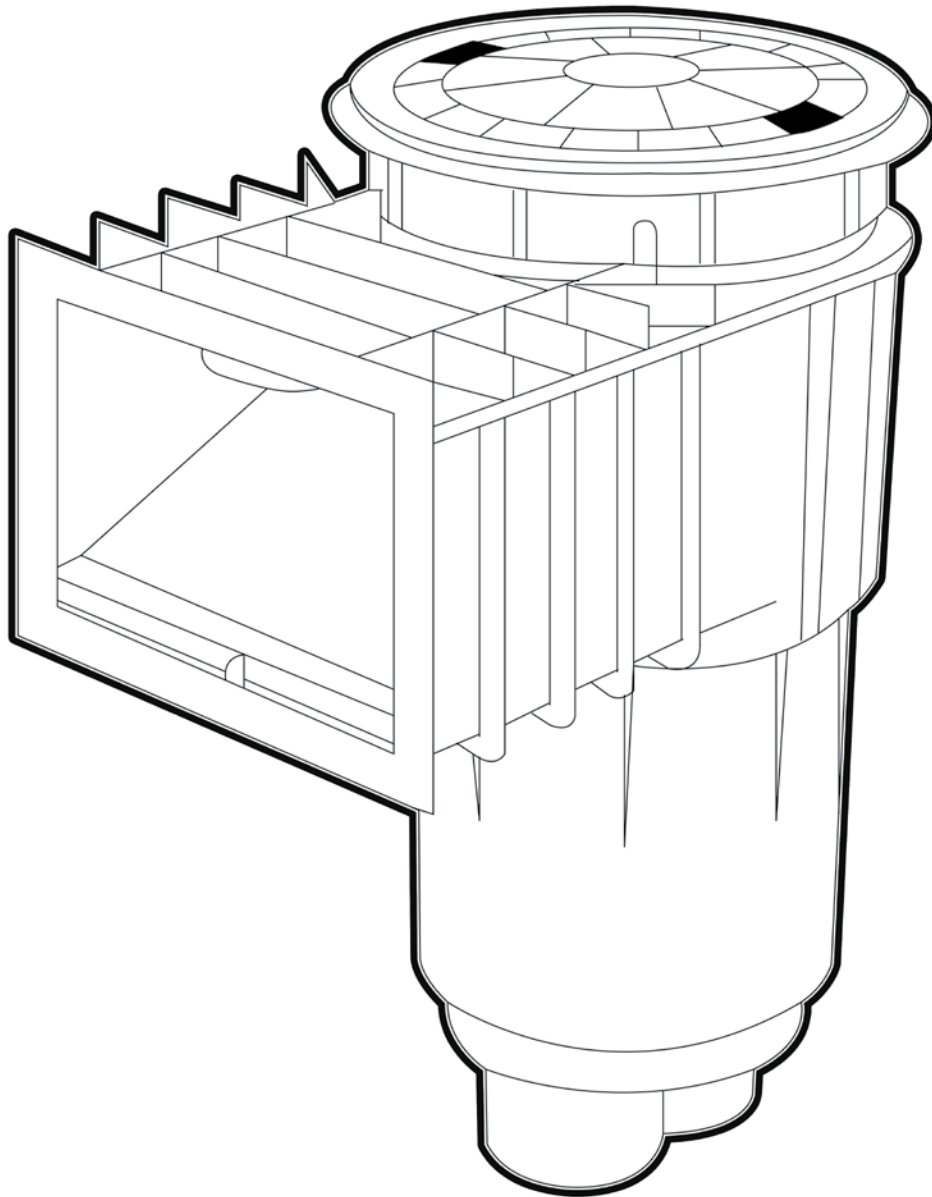




# INGROUND POOL SKIMMER INSTRUCTIONS

## INSTALLATION INSTRUCTIONS & PRODUCT MANUAL

25100-XXX-XXX  
25120-XXX-XXX  
25140-XXX-XXX



# SAFETY INSTRUCTIONS & PRECAUTIONS

## IMPORTANT SAFETY INSTRUCTIONS. READ AND FOLLOW ALL INSTRUCTIONS

### NOTICE

For residential use.



### CAUTION

Follow all applicable local and national regulations (e.g. NEC, CEC whichever is applicable) during installation of the skimmer.



### CAUTION

Plug equalizer line with plug using NSF listed pvc cement



### DANGER

Do not stick hand into the skimmer pipe below the basket while the pump is running.



### DANGER

Risk of hair or body entrapment, drowning or disembowelment. Equalizer fittings can trap hair or body parts causing severe injury or death.



### DANGER

Follow all necessary precautions when connecting a vacuum pump and cleaning the skimmer. Avoid using a cracked or damaged skimmer. Do not step on cracked skimmer plate. Max weight 300 lbs.



### WARNING

Provide more than one suction source in pool system at all times.



### WARNING

If rusting is visible on Water Bond Kit, replace kit immediately.

**SAVE THESE INSTRUCTIONS**

# OPERATION

## Operation For All Skimmers

Water is pulled through the skimmer by the suction of the pump. Water flow carries floating debris into the skimmer where it is collected in the skimmer basket. The floating weir creates a better water flow and increases efficiency. The water level of the pool should be kept at least 2" above the bottom of the mouth of the skimmer to ensure proper operation. To adjust the skimmer flow rotate the diverter plate on the float valve or in the skimmer until the desired flow is achieved. In the instance of multiple skimmers, rotate the diverter plate in each skimmer over the pump port to restrict and balance the flow from each skimmer. To vacuum the pool, remove the float valve and close the diverter plate over the main drain. Install the skimmer vacuum in the skimmer and connect to vacuum hose.

## Operation with Diverter Plate

For full flow, rotate diverter plate completely open. To adjust flow, rotate over the pump port until desired flow is achieved. To vacuum, either remove cover and basket. Screw the hose adapter into the pump port. Fill hose with water and insert over the hose adapter OR insert the skimmer vacuum into skimmer on top of the basket.

## Operation with Float Valve

If the water level drops below the mouth of the skimmer or if the basket is clogged and no water can flow through it, then the float valve will automatically close over the flow ports. This diverts all water flow to the pump from the main drain line. It prevents possible air lock. When the pump is shut off the float valve will float back to the top of the cavity, allowing normal operation to resume.

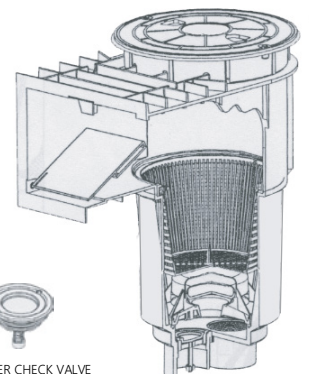
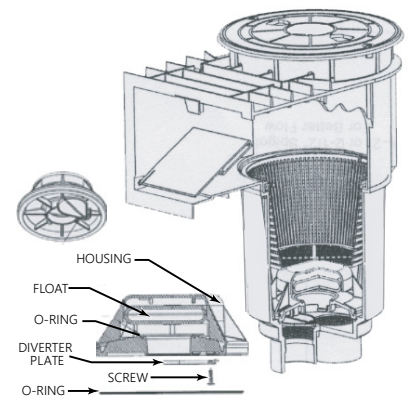
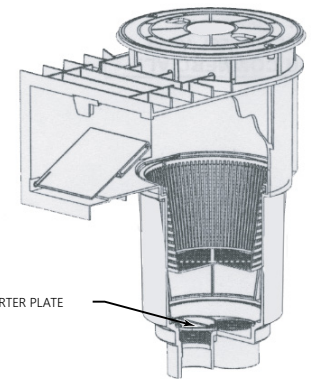
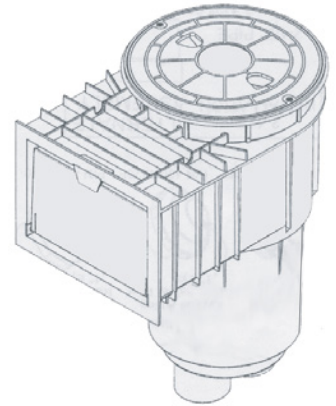
**To Sweep/Brush:** Divert all suction to the main drain by holding the weir above normal operating level and allowing the float to snap shut. Or remove the float valve assembly, close the diverter plate, and replace. To reset the float valve assembly, turn off the pump for 10-15 seconds. The float valve will rise to the top of the skimmer cavity.

**To Vacuum:** Remove cover, basket and float valve assembly. Screw the hose adapter into the pump port, fill the hose with water, and insert over adapter. OR insert the skimmer vacuum into skimmer on top of the basket.

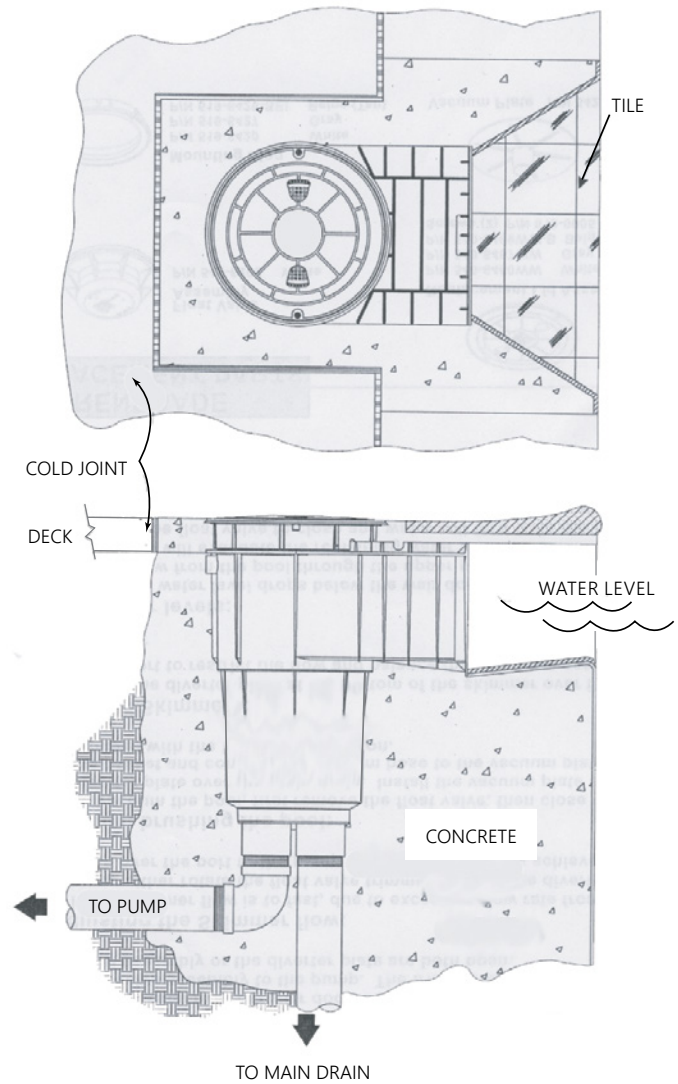
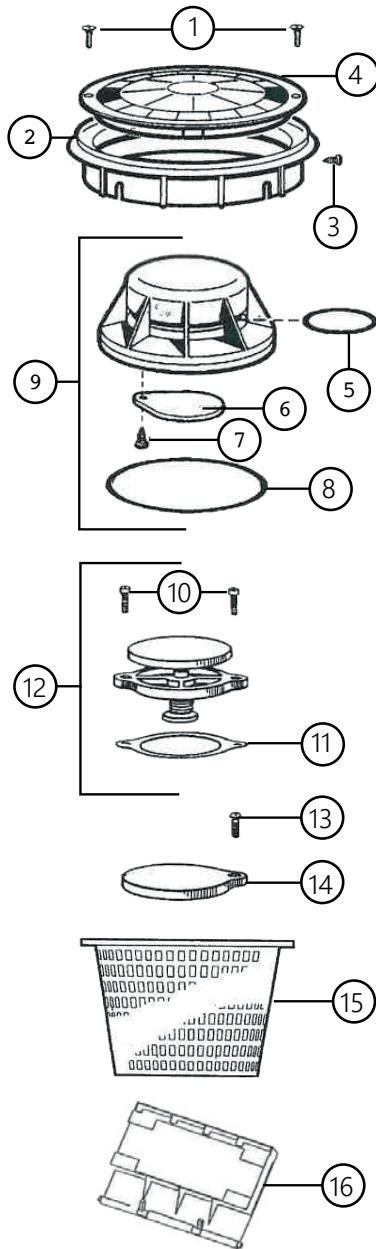
## Operation with Float Valve & Equalizer Check Valve

The Equalizer Check Valve Assembly screws into the main drain port and is used in tandem with the float valve assembly. If the water level drops or if flow is restricted, the float valve will snap down and the equalizer valve will open. This diverts all flow to the pump from the equalizer line and prevent airlock in the pump. When the pump is turned off, and the problem is corrected, the float valve will rise to the top of the skimmer cavity and the equalizer will close, allowing for normal operation to resume.

**To Vacuum:** Remove cover and float valve from the selected skimmer. Place the vacuum plate over the basket. Fill the hose with water and insert over the hose adapter. Adjust the flow from the other skimmers until desired suction is achieved through the vacuum.



# REPLACEMENT PARTS



1- Cover Retaining Screw	9- Float Valve Assembly
2- Adjusting Collar	10- Retaining Screw
3- Collar Screw	11- Equalizer Gasket
4- Cover	12- Equalizer Check Valve
5- Float Valve O-Ring	13- Retaining Screw
6- Diverter Plate	14- Diverter Plate
7- Retaining Screw	15- Basket
8- Float Valve Assembly O-Ring	16- Floating Weir

# WATER BOND GUIDE

Replacement part numbers:

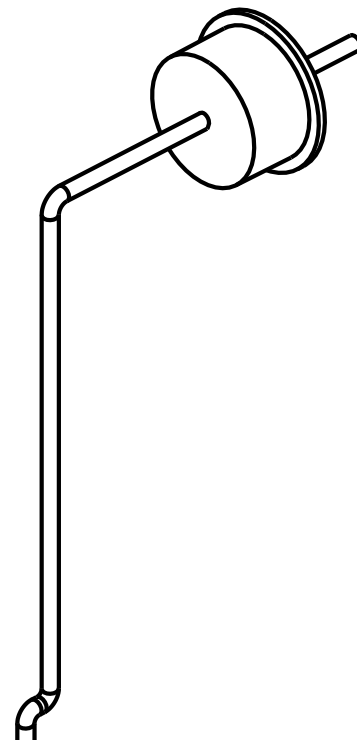
25140-500-120- 1/2" plug

25140-500-100- 1" plug

## Water Bond Kit Replacement

**⚠ WARNING** Turn off power to entire pool system before servicing or replacing the Water Bond Kit.

1. Remove basket and float valve from skimmer.
2. Disassemble Water Bond Plate. Remove and discard old Water Bond Plate.
3. Insert the Water Bond Plate between two ribs inside the skimmer body.
4. Connect new stainless steel plate to copper wire using the provided nut and bolt using an 8 mm socket driver.
5. Replace basket and float valve. Check and make sure basket fits correctly



Split bolt connector

## **CMP Customer Service & Tech Support**

Toll Free: 1-800-733-9060

FAX: 770-632-7115

[support@c-m-p.com](mailto:support@c-m-p.com)

## **Warranty Questions**

[RMA@c-m-p.com](mailto:RMA@c-m-p.com)

## **Support Resource & Videos Online**

[c-m-p.com/resourcecenter](http://c-m-p.com/resourcecenter)

CMP, LLC  
36 HERRING ROAD, NEWNAN, GA 30265  
[WWW.C-M-PCOM](http://WWW.C-M-PCOM)

062020ab