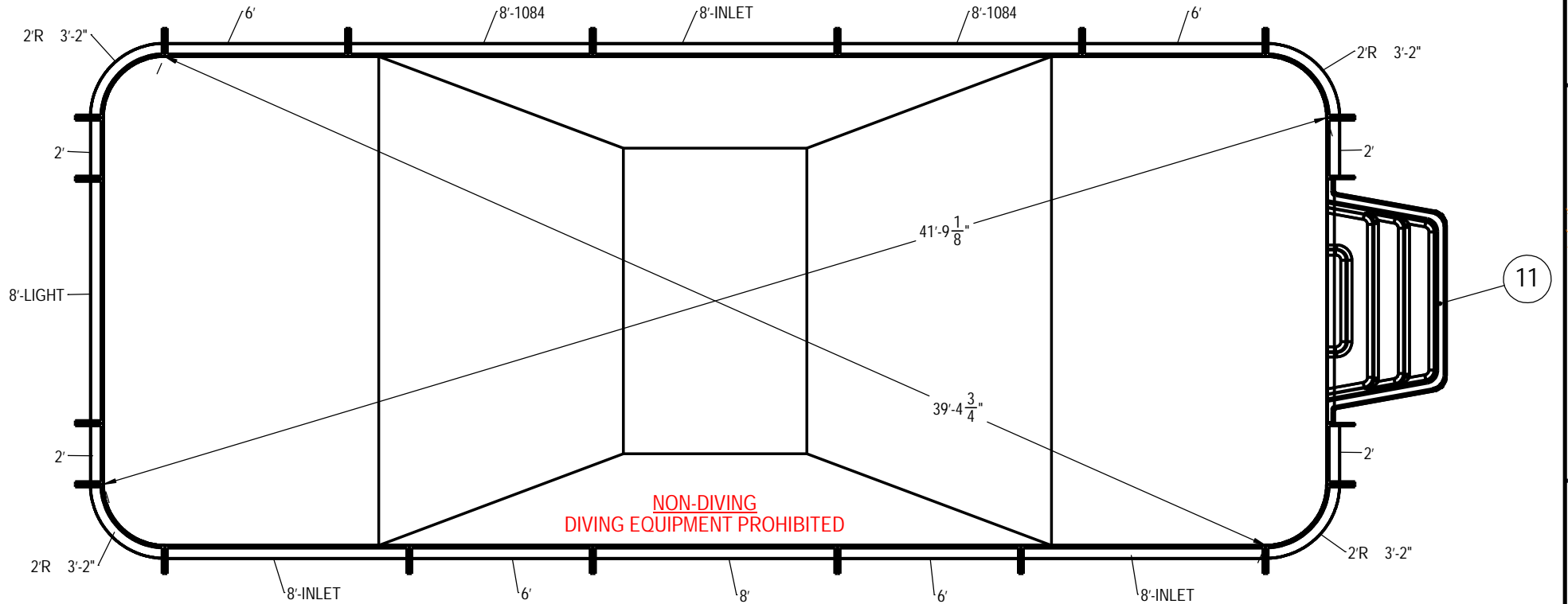


REVISION HISTORY				
REV	DESCRIPTION	DATE	ECO	BY
A	RELEASED FOR QUOTE	5/3/2021		RMILLER



#### NOTES:

- THESE ARE FINISHED DIMENSIONS READY FOR THE LINER.
- DIMENSIONS ARE FROM INSIDE POOL PANELS.
- ROPE AND FLOAT ASSEMBLY SHOULD BE INSTALLED IN ACCORDANCE WITH CURRENT ANSI/APSP/ICC REGULATIONS
- HYDRA LINER TRACK FOR STEPS IS INSTALLED WITH THE BARB FACING THE RISER WALL ON THE STEP.


#### EXCAVATION NOTES:

- ROUGH EXCAVATION SHOULD BE 2" DEEPER IN EACH INSTANCE.
- SOIL TO HAVE MINIMUM BEARING CAPACITY OF 1500 PSF.
- LOCATE TOP OF POOL AT LEAST 6" ABOVE THE SURROUNDING LAND ELEVATION.
- SEE "OVER DIG DETAIL", IN INSTALLATION MANUAL, FOR EXCAVATION AROUND POOL.
- FILL VOIDS UNDER BASE OF PANELS AND TAMP WELL.
- BACK FILL WITH NON-EXPANSIVE MATERIAL.
- FOLLOW ALL CURRENT ANSI / APSP / ICC GUIDELINES FOR RESIDENTIAL POOLS

#### IMPORTANT NOTES:

THIS DOCUMENT IS FOR ILLUSTRATIVE PURPOSES ONLY. THE DEALER OR CONTRACTOR WHO SELLS OR INSTALLS YOUR POOL IS AN INDEPENDENT CONTRACTOR AND IS NOT AN AGENT OF THE MANUFACTURER. THE CONSTRUCTION METHODS ILLUSTRATED HERE ARE SUGGESTIONS AND APPLY ONLY TO NORMAL GROUND CONDITIONS. THERE MAY BE ADDITIONAL PRECAUTIONS AND/OR METHODS OF CONSTRUCTION. PROPER INSTALLATION IS THE RESPONSIBILITY OF THE DEALER/BUILDER/CONTRACTOR.

ITEM	FILE NAME	DESCRIPTION	CUSTOMER DRAWING #	VENDOR PART #	QTY.
1	BOLT, PACK	BOLT, FLANGE, 3/8-16 X 1", PACK (50)	HPST1916	HPST1916	8
2	SBRACE	BRACE, FOLD OVER WITH TURNBUCKLE, STEEL, HPSFOB	HPST1916	HPST1916	20
3	PANEL, STRAIGHT	PANEL, 2' LONG, 700 SERIES	HPSE1084	00005483	4
4	PANEL, RADIUS	PANEL, 2' RADIUS, 3'-2" LONG, 700 SERIES	HPSE1084	00002451	4
5	PANEL, STRAIGHT	PANEL, 6' LONG, 700 SERIES	HPSE1084	00002731	4
6	PANEL, STRAIGHT	PANEL, 8' LONG, 1084, 700 SERIES	HPSE1084	00004966	2
7	PANEL, STRAIGHT	PANEL, 8' LONG, 700 SERIES	HPSE1084	00004961	1
8	PANEL, STRAIGHT	PANEL, 8' LONG, INLET, 700 SERIES	HPSE1084	00004969	3
9	PANEL, STRAIGHT	PANEL, 8' LONG, LIGHT, 700 SERIES	HPSE1084	00004962	1
10	STAKE	STAKE, 14 GA	HPST1084	00003484	20
11	HS110N	STEP, 8" TWIN SEAT, 4 TREAD	HS110N	HS110N	1

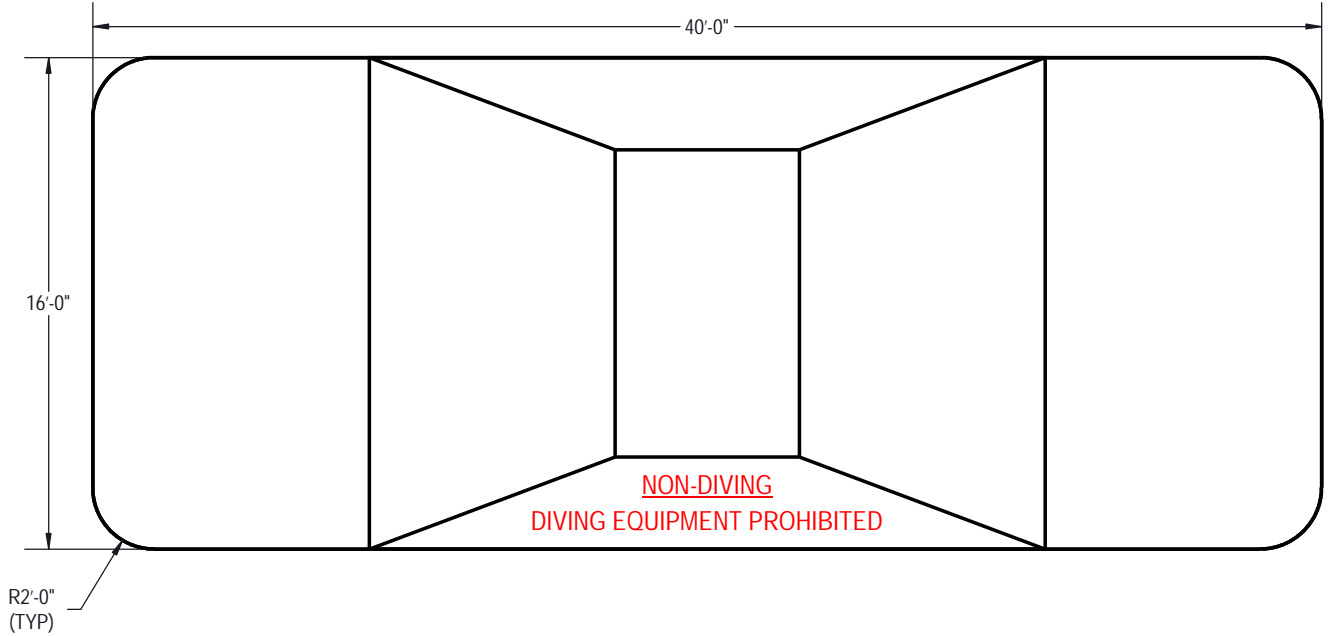
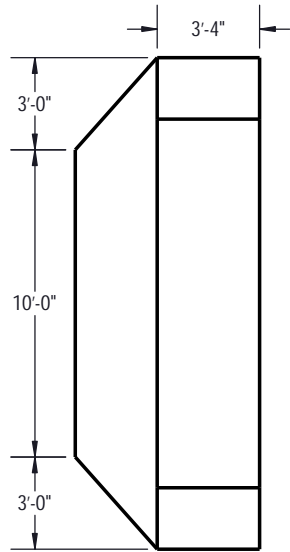
ENGINEERING DRAWING NUMBER: <b>00037019</b>	WEIGHT:	<b>UNLESS OTHERWISE SPECIFIED</b>  DIMENSIONS ARE IN INCHES TOLERANCES DECIMALS: X ± .1 XX ± .01 XXX ± .001 XXXX ± .0005  ANGULAR: X ± 0.5  THIRD ANGLE PROJECTION  
	lbs	
	VOLUME:	
	Inch³	
	COLOR:	
	HEAT TREAT:	
	FINISH:	
	TEXTURE:	

DESIGNED BY:	RMILLER
CREATION DATE:	5/16/2013
DETAILED BY:	RMILLER
DETAILED DATE:	5/3/2021
LAST REVISED BY:	rmiller
LAST REVISED DATE:	5/3/2021
MATERIAL:	

**ATLAS STEEL**

TITLE: LAYOUT, 16' X 40', RECTANGLE, 2' RADIUS, SPORT BOTTOM, 6' DEEP, HS110N, 1- LIGHT, 2- 1084, 3- INLETS, 700 SERIES

PART NUMBER:	SCALE:	SIZE:
<b>00037019</b>	1:96	<b>A</b>
	SHEET:	
	1 OF 3	



AREA	PERIMETER	VOLUME
SQ. FT.	FT.	U.S. GALLONS
636.57	108.57	19662.95

**NOTES:**

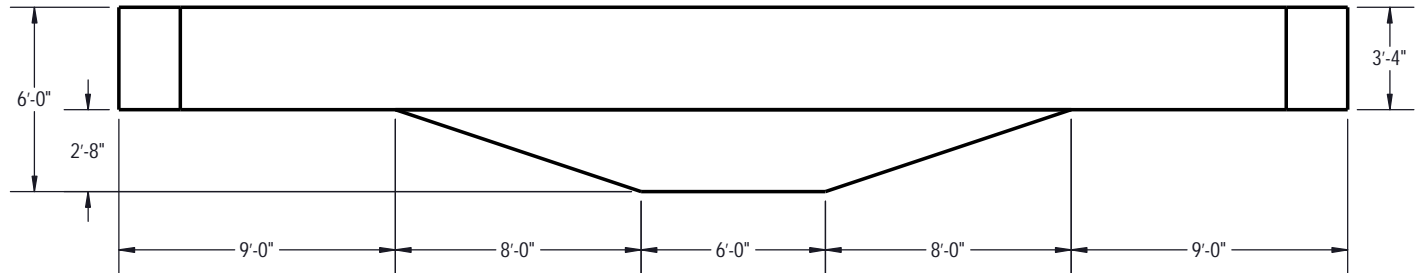
- THESE ARE FINISHED DIMENSIONS READY FOR THE LINER.
- DIMENSIONS ARE FROM INSIDE POOL PANELS.
- ROPE AND FLOAT ASSEMBLY SHOULD BE INSTALLED IN ACCORDANCE WITH CURRENT ANSI/APSP/ICC REGULATIONS
- HYDRA LINER TRACK FOR STEPS IS INSTALLED WITH THE BARB FACING THE RISER WALL ON THE STEP.

**EXCAVATION NOTES:**

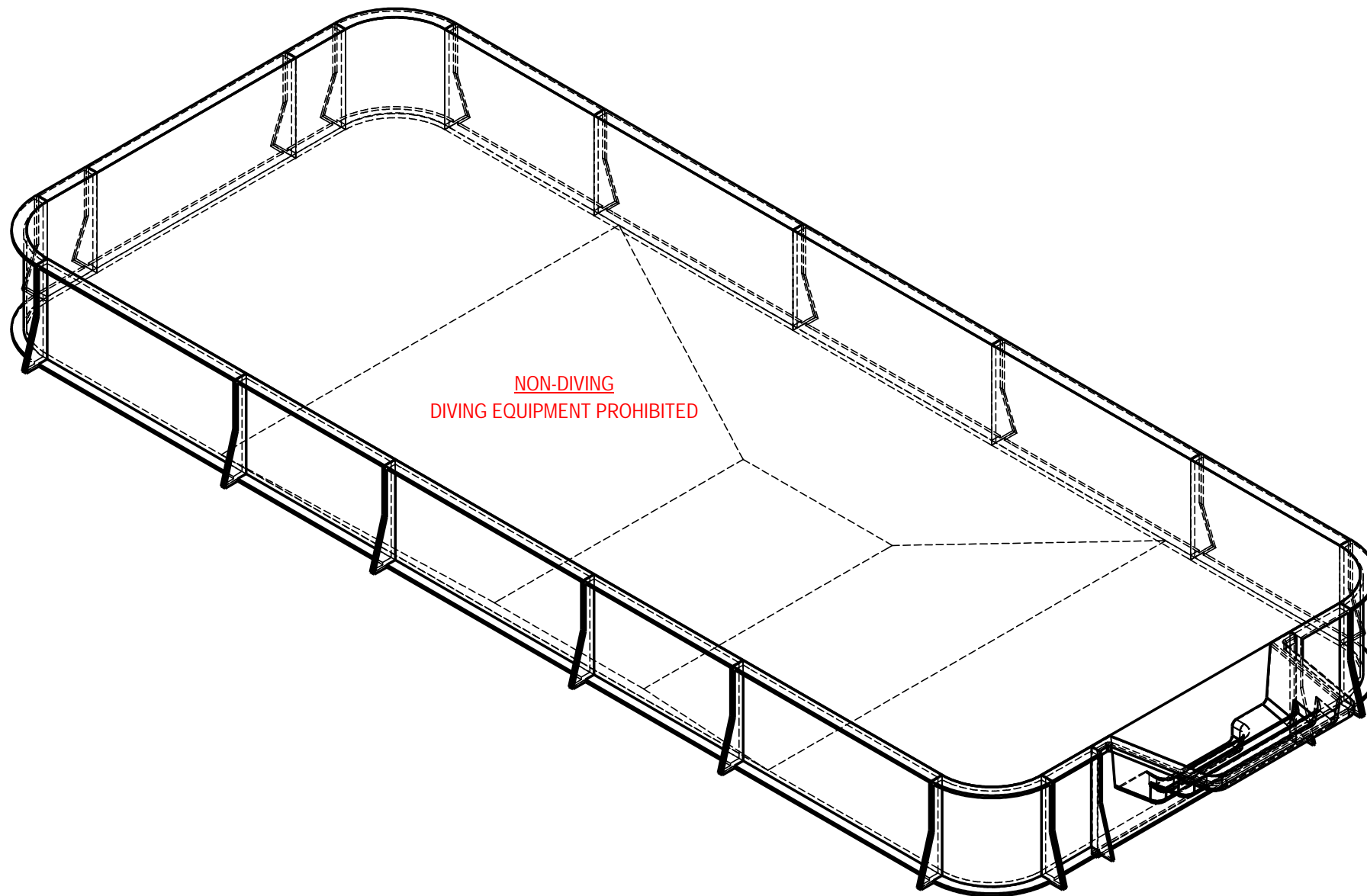
- ROUGH EXCAVATION SHOULD BE 2" DEEPER IN EACH INSTANCE.
- SOIL TO HAVE MINIMUM BEARING CAPACITY OF 1500 PSF.
- LOCATE TOP OF POOL AT LEAST 6" ABOVE THE SURROUNDING LAND ELEVATION.
- SEE "OVER DIG DETAIL", IN INSTALLATION MANUAL, FOR EXCAVATION AROUND POOL.
- FILL VOIDS UNDER BASE OF PANELS AND TAMP WELL.
- BACK FILL WITH NON-EXPANSIVE MATERIAL.
- FOLLOW ALL CURRENT ANSI / APSP / ICC GUIDELINES FOR RESIDENTIAL POOLS

**IMPORTANT NOTES:**


THIS DOCUMENT IS FOR ILLUSTRATIVE PURPOSES ONLY. THE DEALER OR CONTRACTOR WHO SELLS OR INSTALLS YOUR POOL IS AN INDEPENDENT CONTRACTOR AND IS NOT AN AGENT OF THE MANUFACTURER. THE CONSTRUCTION METHODS ILLUSTRATED HERE ARE SUGGESTIONS AND APPLY ONLY TO NORMAL GROUND CONDITIONS. THERE MAY BE ADDITIONAL PRECAUTIONS AND/OR METHODS OF CONSTRUCTION. PROPER INSTALLATION IS THE RESPONSIBILITY OF THE DEALER/BUILDER/CONTRACTOR.



ENGINEERING DRAWING NUMBER: <b>00037019</b>	WEIGHT: lbs	<b>UNLESS OTHERWISE SPECIFIED</b> DIMENSIONS ARE IN INCHES TOLERANCES DECIMALS: X ± .1 XX ± .01 XXX ± .001 XXXX ± .0005  ANGULAR: X ± 0.5 THIRD ANGLE PROJECTION 	DESIGNED BY: RMILLER	CREATION DATE: 6/4/2013	ATLAS STEEL	
	VOLUME: 19662.95 Inch³		DETAILED BY: RMILLER	DETAILED DATE: 5/3/2021		
	COLOR:		LAST REVISED BY: rmiller	LAST REVISED DATE: 5/3/2021	TITLE: LAYOUT, 16' X 40'; RECTANGLE, 2" RADIUS, SPORT BOTTOM, 6' DEEP, HS110N, 1- LIGHT, 2- 1084, 3- INLETS, 700 SERIES	
	HEAT TREAT:		MATERIAL:			
	FINISH:				PART NUMBER:	00037019
	TEXTURE:				SCALE: 1:96	SIZE: A
					SHEET: 2 OF 3	



NON-DIVING  
DIVING EQUIPMENT PROHIBITED

ENGINEERING DRAWING NUMBER: <b>00037019</b>	WEIGHT: lbs	<b>UNLESS OTHERWISE SPECIFIED</b> DIMENSIONS ARE IN INCHES TOLERANCES DECIMALS: X ± .1 XX ± .01 XXX ± .001 XXXX ± .0005 ANGULAR: X ± 0.5 THIRD ANGLE PROJECTION 	DESIGNED BY: RMILLER	CREATION DATE: 5/16/2013	ATLAS STEEL	
	VOLUME: Inch³		DETAILED BY: RMILLER	DETAILED DATE: 5/3/2021		
	COLOR:		LAST REVISED BY: rmiller	LAST REVISED DATE: 5/3/2021	TITLE: LAYOUT, 16' X 40', RECTANGLE, 2" RADIUS, SPORT BOTTOM, 6' DEEP, HS110N, 1- LIGHT, 2- 1084, 3- INLETS, 700 SERIES	
	HEAT TREAT:		MATERIAL:			
	FINISH:				PART NUMBER:	00037019
	TEXTURE:				SCALE: 1:96 SHEET: 3 OF 3	SIZE: <b>A</b>