

Installation Manual

For



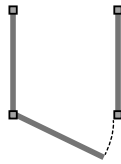
Contact us at (732) 286-9496 or E-mail info@avcon.com with questions during the installation process.
Our service team is available Mon-Fri 7:30am-4pm.

Rev. 6-1-21

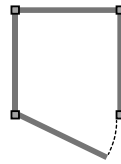
Floor Model Options

Single Models Size: 46" d x 46" w x 88" h, 36" d x 36" w x 88" h - 89 1/2" h with roof

Model S-1

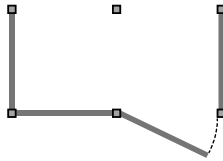


Model S-2

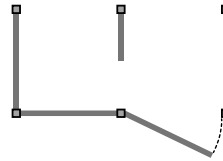


Double Models Size: 46" d x 88" w x 88" h, 36" d x 68" w x 88" h - 89 1/2" h with roof

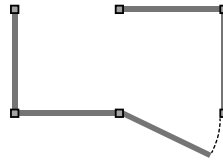
Model D-1



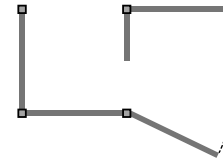
Model D-2



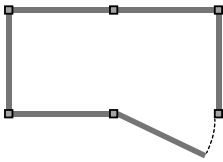
Model D-3



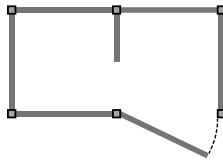
Model D-4



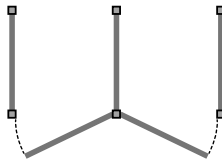
Model D-5



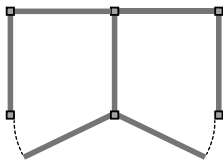
Model D-6



Model D-7

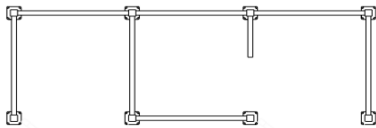


Model D-8

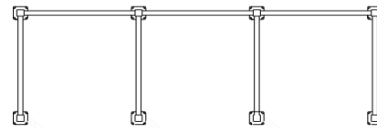


Cabana Models Size: 46" d x 130" w x 88" h, 36" d x 100" w x 88" h - 89 1/2" h with roof

MODEL
C-1



MODEL
C-2



Tools Required:

Tape Measure, Screw Gun, Level, Pencil, 1/2" Socket Wrench and Silicone.

***Hardware for shower parts is included in each part box. #2 Square tip bit is included in door hardware box.**

Before beginning installation determine what the unit is to be mounted onto. There are 3 options:

- 1. Directly onto a concrete surface, pavers or decking using with AVCON base frame(s).**
 - a. See install instructions "A" below (page 3).**
- 2. Directly onto concrete, pavers, or decking without using the AVCON base frame(s)**
 - a. See install instructions "B" below (page 3).**
- 3. Directly onto the ground, sand, or any similar surface, using the AVCON Base Frame(s).**
 - a. See install instruction "C" below (page 3).**

Install Instruction "A"

1. Position Base Frame in desired location and position. Ensure sufficient clearance behind unit for plumbing fixtures, hose bibs, water lines, etc.
2. Using a level, ensure frame is level and square to any adjacent structure. Shim as needed.
3. If a double or triple unit is being installed, attach base expander frame(s) ensuring support members run parallel with each other. Attachment is made with 2 Stainless self-drilling hex head screws provided.
4. Use appropriate masonry anchors to fasten the base frame into the concrete base or lags if mounting onto decking.
 - a. Note: If mounting onto pavers, ensure there is sufficient base material beneath the pavers to support unit and to prevent wind loads from toppling or moving unit.
 - b. It is necessary to install blocking when mounting onto decking.
5. Proceed to "Post Bracket Installation (Page 4)".
6. Once post brackets are installed, each post can be attached "finger tight" to the base and expander frame.

Install Instructions "B"

1. **Note:** It is important for spacing between posts to be as specified below in General Information to ensure wall panels and door fits correctly in opening. This step will require post brackets to be installed.
 - a. **Note:** A 36" single, double or Cabana the spacing from inside edge to inside edge between all posts is 29.75". For a 46" single, double or Cabana unit the spacing from inside edge to inside edge of all posts is 39.75".
 - b. It is recommended that wall panels be joined to posts before mounting onto pad or pavers. This will require completion of the installation of all post brackets. **(See Post Bracket Installation (Page 4))**. There are four posts for a single and six posts for a double unit. These can be installed onto the wall panels.
 - c. The section chosen for the door opening and the section chosen for shower and faucets will require a single "U" channel header to be placed between adjoining posts at the top. This will assist in maintaining proper spacing.
 - d. Before anchoring ensure all posts are plumb vertically and spaced identically apart between posts.
 - e. Anchor posts using the appropriate anchors or lags in each of the holes in the base plate. Shim as required to keep posts level and plumb.
2. Proceed with installing wall panels onto posts. (See instructions: **Installing wall Panels**.)

Install Instructions "C"

1. Note: You will need a 6"x6" base to mount the AVCON Frame onto. This will require 2"x6" treated lumber (for ground contact) stacked on top of each other creating a

2. nominal 6" x 6" support foundation. Deck screws will be used to screw the 2x6 boards together. See figure illustrations below.
3. The finish perimeter of the base foundation will be 1" less than the AVCON Aluminum Frame. See list below:

a. 36" Single:	35" x 35"	46" Single	45" x 45"
b. 36" Double	35" x 66.75"	46" Double	45" x 86.75"
c. 36" Cabana	35" x 98.5"	46" Cabana	45" x 128.5"
4. It is recommended that corners be staggered creating an overlap between boards. Prior to final screwing of board use a carpenter square to ensure corners are 90 degrees.
5. Once wood base is finished position exactly where unit is to be installed. Trace perimeter of wood base.
6. Move base aside and excavate ground approximately 5" deep so that top of wood base is flush with surrounding ground. Use excess dirt removed to grade around outside perimeter of wood base.
7. Using "stakes" cut from excess lumber or other materials, drive stakes into ground at least 24" at each inside corner. Top of stakes should be flush or slightly below top of wood frame.
8. Using level and shovel or pry bar, lift or lower each corner of base one at a time until level. Use deck screws through stakes into wood base to keep frame level.
9. It is recommended an additional hole above 1' deep be dug inside area directly beneath where shower is to be installed.
10. Fill the interior with 3/8" stone for a French drain. * 6x6 base should be **FLUSH/LEVEL** to pavers or grade.
11. Position AVCON aluminum frame on top of wood base. There should be an approximately 1/2" - 1" overlap of the aluminum frame over the wood base frame.
12. Secure the aluminum base frame to the wood foundation frame using wood lags through holes provided in base frame.
13. Proceed with Post Bracket Installation.



Post Bracket Installation

Note: The Post each bracket, it is location of the panel section).



Figure 1 Post Bracket

Brackets support the wall panels. To determine location of important to know your door location, door swing, and containing the shower Head (assuming the unit has a shower

Flange Cover on each post before installing any of the brackets.

1. Install support
2. From top of the bottom where all shower head) should face down. The two brackets in the sections where the removable shower head panel will be installed should have the opening in the brackets facing up. There will be 2 brackets at the door posts with opening facing up.
3. Center the bracket on post and install with $\frac{3}{4}$ " stainless steel self-drilling screw provided.
4. Measure from the bottom of the top bracket down the post 71" and mark. This is the bottom of the lower bracket. Install with the bracket open end facing up. **Note: if a Cabana wall is being installed bottom measurement will be 79".**
5. Determine how many outside corner posts are needed in the unit you are installing.
 - a. Note: The section where the door is to be installed will not have lower brackets.
 - b. Also, at this time do not install the lower bracket on the posts where the shower panel is to be installed. See items 7d and 7e below for removable shower panel installation.
6. Corner posts brackets should be attached at 90 degrees to each other

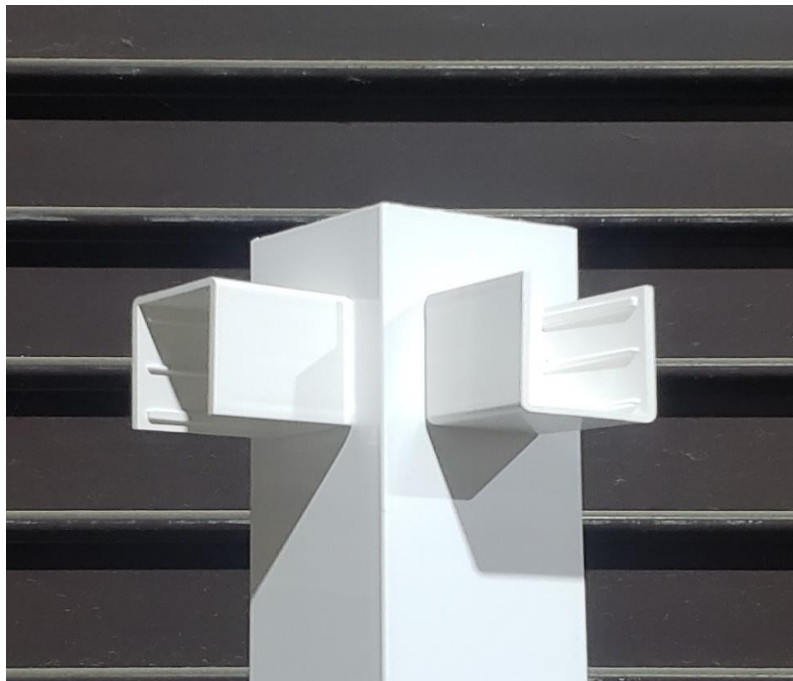


Figure 3 Corner Brackets installed

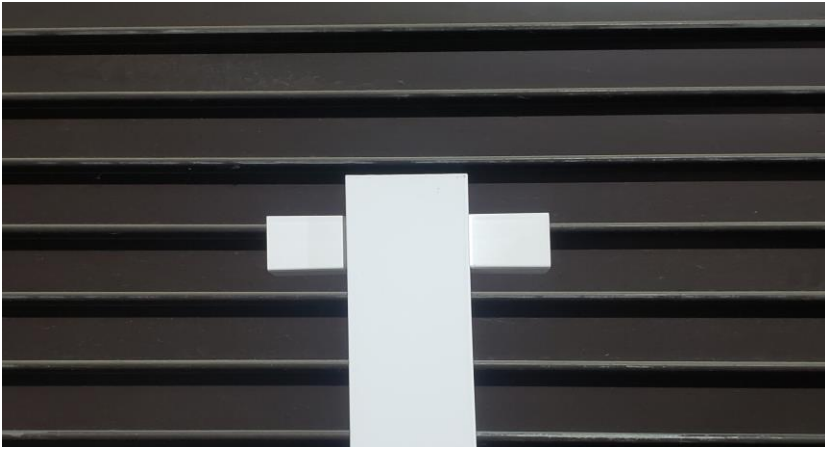


Figure 4 In-Line Top Brackets

7. In-Line post brackets should be attached at 180 degrees to each other.
8. The posts where the door will be hung will not have a lower bracket on the door side.



Figure 5 Bracket one side-door on opposite side

9. The wall panel containing the shower is designed to be removable. This wall panel is shorter than the others and requires a second “header” channel, open end facing down and directly beneath the top two previously installed brackets. The uppermost 2 brackets on each post should have the open side facing up. Immediately below the top brackets, install 2 more with the opening facing down.
10. The lower brackets supporting the removable panel will have one side of the brackets removed. Using snips or a box knife, remove one side of the 2 lower brackets. Install bracket with open end up and open side facing into the interior of the unit. (See Fig 6)

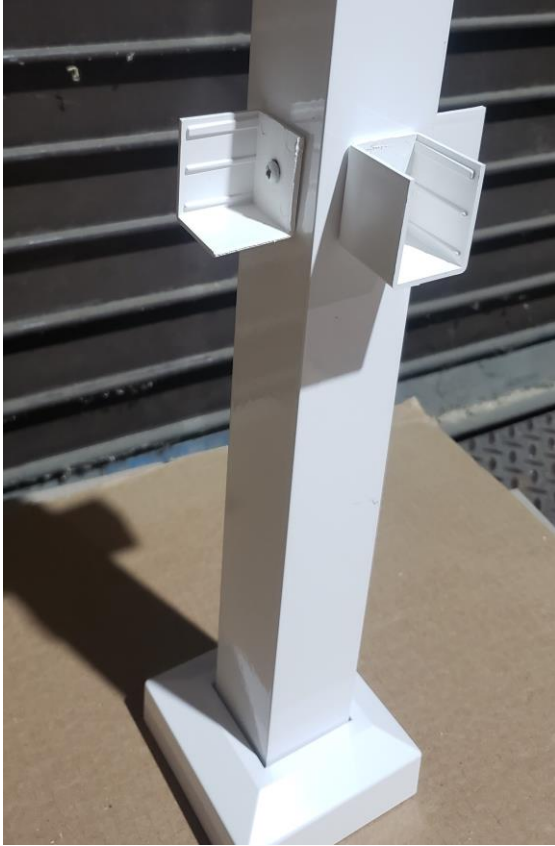
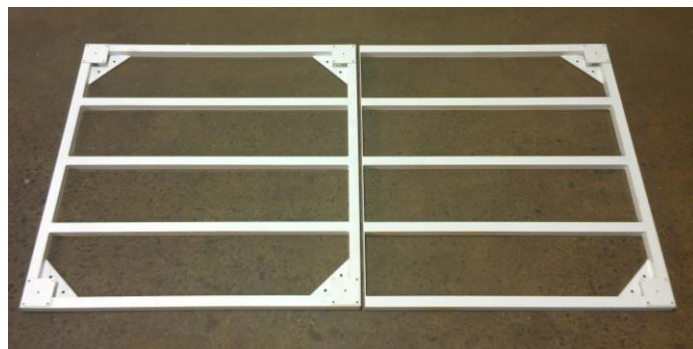
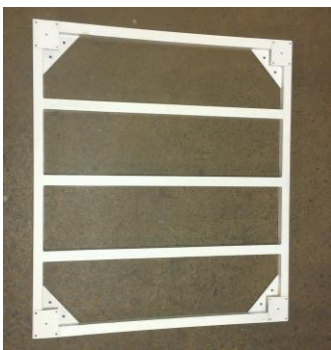


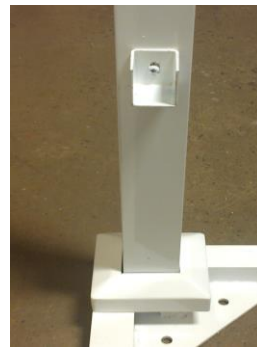
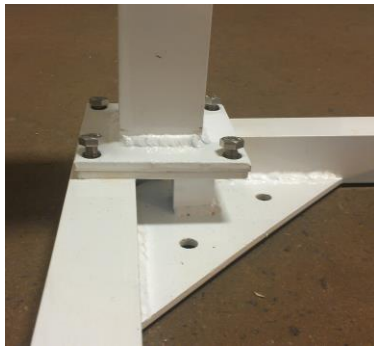
Figure 6 Bracket for removable shower panel

11. Units with Floor Frame:

- a. For a single unit proceed with place frame into position.
- b. For a double or cabana units proceed with attaching expander frame to main frame. The expander frame will have a flat bar on one side rather than square tubing.
- c. Using self-drilling tex shrews provided join the frames together.
- d. Ensure the floor support member run parallel to each other. See below



- e. Install all posts. Finger tighten bolts at this time. **The elongated holes at the base of the post must be parallel with the shower door opening.** Lift flange cover to access the pre-drilled and pre-tapped holes.
- f. Using 5/16" x 3/4" stainless steel bolts (4 per post) secure post to frame by screwing in bolts halfway. ***Do NOT over tighten!** Allow room to move the post slightly this is important to be able to set the wall panels. (See PIC 1c)



Follow same process for cabana unit installation

2) Installing Wall Panels:

***If you purchased Shower Valve Trim Set with removable wall panel, see 2e for instructions to install the removable panel. ***

- a. Set the wall panel into the bottom brackets first, and then pull the posts away at the top. You will see tape on the side or the panel edge U channel. Remove the protective cover before fully engaging the panel into post brackets. The top of the wall panel should fit snug in the upper brackets. If not, simply loosen the base plate bolts until you can position the wall panel into the bracket.
- b. Next, fasten the wall panel to the brackets using the self-drilling $\frac{3}{4}$ " stainless steel screws on all four corners of the wall panel. ***All screws must be facing the interior of the shower & centered on bracket.** (See picture below)
- c. Continue this process until all wall panels are installed. If there is any part of the shower where the existing structure is used as the rear wall, and a wall panel is not being installed, a header will be provided for you to secure the two posts. A header will also be installed on the top of the door opening and above the removable panel section. Attach the header (**OPEN SIDE UP**) to the brackets using self-drilling $\frac{3}{4}$ " stainless steel screws. (See PIC 2h)
- d. Tighten the bottom bolts of each post to secure the unit. The post must be tightened evenly to ensure unit will be level.



e. Removable panel installation

- a. Install panel, top first, into the upper downward facing U channel/header which was previously installed directly below the main header in step 9 above. You will have two headers, one over the other. Top will have open end up and the 2nd header immediately below the first will be open end down.
- b. Install bottom removable panel into the lower brackets. These brackets will have one side open. Rest panel into these brackets.
- c. Drill ¼" hole on bottom of the panel and brackets far side of the brackets.
- d. Install clevis pins. This will be done on both sides. See pictures below.



Figure 9 Double Header (U channel)



Figure 8 Hole for Clevis Pin and Clevis pin installed

Installing Half Wall Panel (Double Units):

- a. Install post brackets on both center posts, each facing toward center of unit. As in original brackets installation, mark a line 2.5" from top of post. This will be the bottom of the brackets.
- b. Install a header channel between the center posts connecting the two.
- c. Install a third post bracket on bottom of rear post only (71.5" below the top bracket).
- d. Install the half wall panel up into the header.
- e. Fasten a self-drilling screw through the header into the top of the half wall.
- f. Position the divider panel into the bottom bracket and fasten.



Figure 10 Half wall divided installation

3) Installing Door:

- a. A header should have been previously installed between posts in door opening. If not, you should do so now.
- b. Determine door swing and proper side for hinge attachment.

- c. Enlist help to align bottom of door flush with adjoining panel or cut blocking (i.e. 2 x 4" wood) so that the door, when resting on the blocking, is flush with the bottom of the adjoining panel.
- d. Position door so the hinge barrel pin (attached to the door) is evenly aligned with post edge and on the outside corner edge of the post. This will ensure that the door will be flush when fully closed.
- e. Hinge flange should lay flat on door opening side of the post.
- f. Install self-drilling screws in each pre-drilled hole on the hinge ensuring that the hinge is straight on the post. ***The bottom of the door should align with the bottom of adjacent wall panels.**



Installing the Lock: (If not factory installed)

- a. Remove the lock from the door hardware box and ensure deadbolt is in the closed position. ***Important***
- b. Separate the door lock and place spacer over door lock so that the flat side of the spacer is against rubber seal while positioning the notched end of the spacer toward the dead bolt. (See PIC 6b) **Do not remove spacer.**
- c. Insert spacer on the inside of the door (See PIC 6c-1). Attach the other half by matching the notched pin into the opening of the red leaver. Secure to the door by using the four 3/4" stainless steel screws provided. (See PIC 6c-2) Use the two 1/4" stainless steel screws provided to secure the lock to the side of the door. (See PIC 6c-3)



***TIP-Install the (2) Flat Head Screws in the strike side as per PIC 6c-3. Start the screws as seen**

in PIC. 6c-2 in a diagonal pattern ¼ turn only and repeat in all four corners. Then start again & tighten.

- d. Hold the door in the closed position and mark the proper location to attach the strike plate. (See PIC 6d)
- e. Attach the strike plate using the self-drilling ¾" stainless steel screws. Make sure edge is flush with front edge of post and the beveled edge is on the outside so the door closes properly. (See PIC 7e)
- f. Attach the door stop to the post behind the strike plate. It is important to have the **center hole of doorstop align with the middle of the strike plate.** (See PIC 7f)



***IMPORTANT: YOU ARE READY TO ADJUST POSTS FOR EQUAL REVEAL AND TIGHTEN THE POST BOLTS TO THE FRAME**

7) Installing the Roof:

***2 people are recommended for this step. If unit is being Installed against a structure, install post caps prior to Installing roof. See Step 10. ***

- a. Assemble the roof on the ground by sliding the louvers (See PIC 7a.) For privacy purposes determine the direction you would like the louvers to go prior to sliding them on.
- b. If you are using the pergola end caps it is important to use silicone or PVC cement to secure them to the cross beams in the front of the shower (door side). (See PIC 7b-1) Secure the end caps (flat) with silicone to the back side of the cross beams. (See PIC 7b-2)
- c. Dependent on unit size, space cross beams evenly: With one person standing inside the shower to guide and support the roof, lift the roof and slide it into place. Make sure the back of the cross beams are flush with the base frame (PIC 1a) before proceeding. The end cross beams should sit just inside your top brackets. (See PIC 7c). Dependent on unit size, space the cross beams evenly. (See PIC 7d)



- d. Use the L brackets and self-drilling $\frac{3}{4}$ " stainless steel screws to attach each cross beam to the inside of a wall panel or header on both the front and rear of the shower. (See PIC 7d)



- e. It is time to secure the privacy bracket on either side of the roof. Place the drilled holes against cross beams. Center it to where it should be (approximately 5" on either side). Use self-drilling $\frac{3}{4}$ " stainless steel screws in the pre-drilled holes to secure the privacy bracket to the louvered roof. (See PIC 7e)



8) Installing the Towel Bar/Hook Bar:

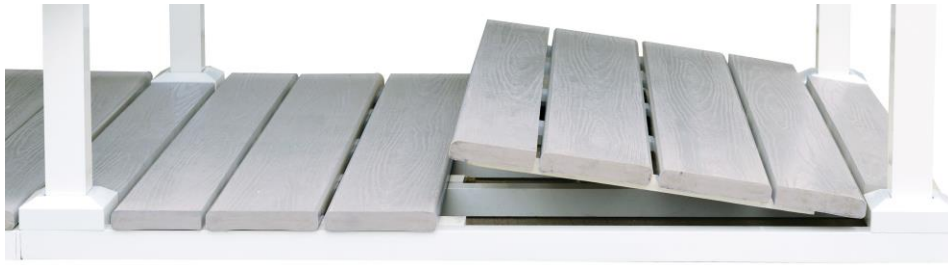
- a. Towel Bar: Measure 54" off finished floor (or as desired) and mark 2 adjacent posts (the desired Posts on the side where the towel bar will be placed.)
Use stainless steel screws provided. (See PIC 8a.)
- b. Hook bar should be installed at the same height as
The top of door hinge (or as desired). (See PIC 8b)



9) Installing the Floor:

- a. For a single base frame start at either edge of the frame, lay one of the pre-assembled floor panels in place; followed by the matching interlocking panel. Note the floor planks should run perpendicular to the frame joists. (See PIC 9a)
- b. For the expander frame the floor panel with the smaller plank is to go on the side away from the single base floor with the floor planks perpendicular to the frame joists. Install the remaining floor panel in the open space next to the single base floor frame.

PIC 9a



10) Install the Post Caps:

- a. Use silicone to secure post cap to the top of each post. (See Pic 10a)



Cleaning/Maintenance:

1. It is recommended to use any multi-purpose cleaner with a soft rag and/or soft brush when cleaning the unit walls, base frame, and posts. This should be done at least three times a year.
2. Use a brush with mild cleaner to clean soap scum/mold from floor decking. If that does not work use a power washer with a fan tip approximately 10" away from surface.