

REVISION HISTORY				
REV.	DESCRIPTION	DATE	ECO	BY
A	RELEASED FOR QUOTE	4/07/22		RCOLBOCH

NOTES:

- THESE ARE FINISHED DIMENSIONS READY FOR THE LINER.
- DIMENSIONS ARE FROM INSIDE POOL PANELS.
- ROPE AND FLOAT ASSEMBLY SHOULD BE INSTALLED IN ACCORDANCE WITH CURRENT ANSI/ASPS/ICC REGULATIONS
- HYDRA LINER TRACK FOR STEPS IS INSTALLED WITH THE BARB FACING THE RISER WALL ON THE STEP.

EXCAVATION NOTES:

- ROUGH EXCAVATION SHOULD BE 2" DEEPER IN EACH INSTANCE.
- SOIL TO HAVE MINIMUM BEARING CAPACITY OF 1500 PSF.
- LOCATE TOP OF POOL AT LEAST 6" ABOVE THE SURROUNDING LAND ELEVATION.
- SEE "OVER DIG DETAIL" FOR EXCAVATION AROUND POOL.
- FILL VOIDS UNDER BASE OF PANELS AND TAMP WELL.
- BACK FILL WITH NON-EXPANSIVE MATERIAL.
- FOLLOW ALL CURRENT ANSI / APSP / ICC GUIDELINES FOR RESIDENTIAL POOLS

IMPORTANT NOTES:

THIS DOCUMENT IS FOR ILLUSTRATIVE PURPOSES ONLY. THE DEALER OR CONTRACTOR WHO SELLS OR INSTALLS YOUR POOL IS AN INDEPENDENT CONTRACTOR AND IS NOT AN AGENT OF THE MANUFACTURER. THE CONSTRUCTION METHODS ILLUSTRATED HERE ARE SUGGESTIONS AND APPLY ONLY TO NORMAL GROUND CONDITIONS. THERE MAY BE ADDITIONAL PRECAUTIONS AND/OR METHODS OF CONSTRUCTION. PROPER INSTALLATION IS THE RESPONSIBILITY OF THE DEALER/BUILDER/CONTRACTOR.

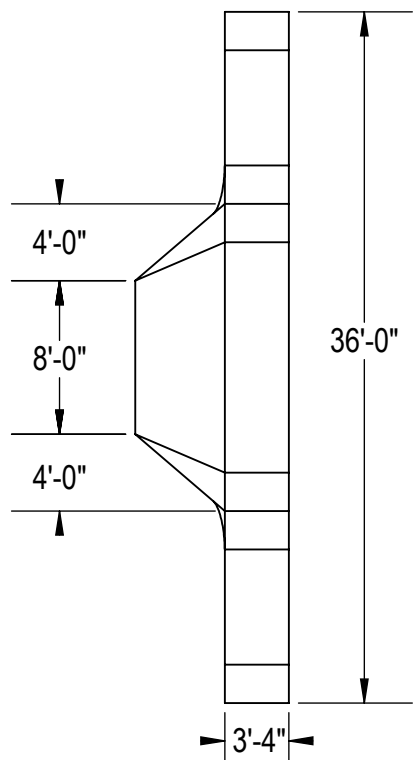
ITEM	FILE NAME	DESCRIPTION	CUSTOMER DRAWING #	VENDOR PART #	QTY.
1	BOLT, PACK	BOLT, FLANGE, 3/8-16 X 1", PACK (50)	HPS1916	HPS1916	7
2	HS110N	STEP, 8", TWIN SEAT, 4 TREAD	HS110N	HS110N	1
3	PANEL, RADIUS	PANEL, 2' RADIUS, 3-2" LONG, 700 SERIES	HPSE2R	00002451	6
4	PANEL, RR	PANEL, 2' REVERSE RADIUS, 3'-1 3/4" LONG, 700 SERIES	HPSE2RR	00037303	2
5	PANEL, STRAIGHT	PANEL, 2' LONG, 700 SERIES	HPSE102P	00002472	2
6	PANEL, STRAIGHT	PANEL, 4' LONG, 700 SERIES	HPSE104P	00002723	6
7	PANEL, STRAIGHT	PANEL, 8' LONG, 1084, 700 SERIES	HPSE10884	00004966	3
8	PANEL, STRAIGHT	PANEL, 8' LONG, INLET, 700 SERIES	HPSE108I	00004969	2
9	PANEL, STRAIGHT	PANEL, 6' LONG, INLET, 700 SERIES	HPSE106I	00006322	2
10	SBRACE	BRACE, FOLD OVER WITH TURNBUCKLE, STEEL, HPSFOB	HPSFOB	HPSFOB	28
11	STAKE	STAKE, 14 GA	HPSSTAKE	00003484	28
12	PANEL, STRAIGHT	PANEL, 8' LONG, 700 SERIES	HPSE108P	00004961	4

WEIGHT: 373051.5 lbs  
VOLUME: Inch³  
COLOR:  
HEAT TREAT:  
FINISH:  
TEXTURE:

UNLESS OTHERWISE SPECIFIED  
DIMENSIONS ARE IN INCHES  
TOLERANCES  
DECIMALS: X ± .1  
XX ± .01  
XXX ± .001  
XXXX ± .0005  
ANGULAR: X ± 0.5  
THIRD ANGLE PROJECTION

DESIGNED BY: BUMPHREY  
CREATION DATE: 03/24/17  
DETAILED BY: BUMPHREY  
DETAILED DATE: 01/08/18  
LAST REVISED BY: rcolboch  
LAST REVISED DATE: 04/07/22  
MATERIAL:

HYDRA POOLS  
TITLE: LAYOUT, 16' X 40' X 36', TEE, 2' RADIUS, 8" DEEP, HS110N, 3-1084, 4-INLET, 700 SERIES  
PART NUMBER:  
SCALE: 1:192  
SHEET: 1 OF 4  
SIZE: A



AREA	PERIMETER	VOLUME
SQ. FT.	FT.	U.S. GALLONS
956.58	145.13	30536.23

**NOTES:**

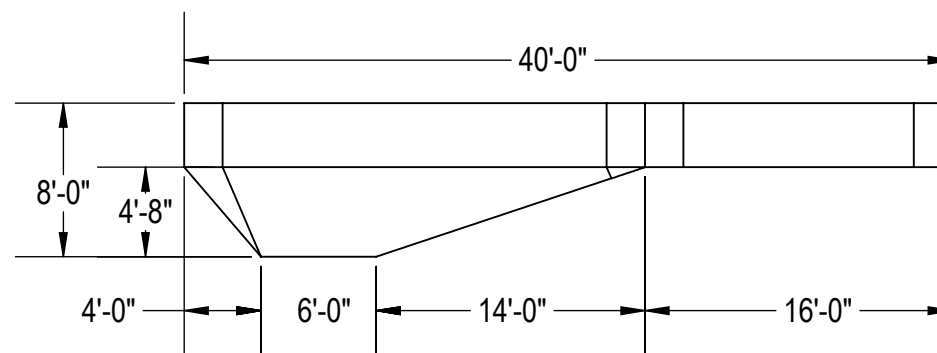
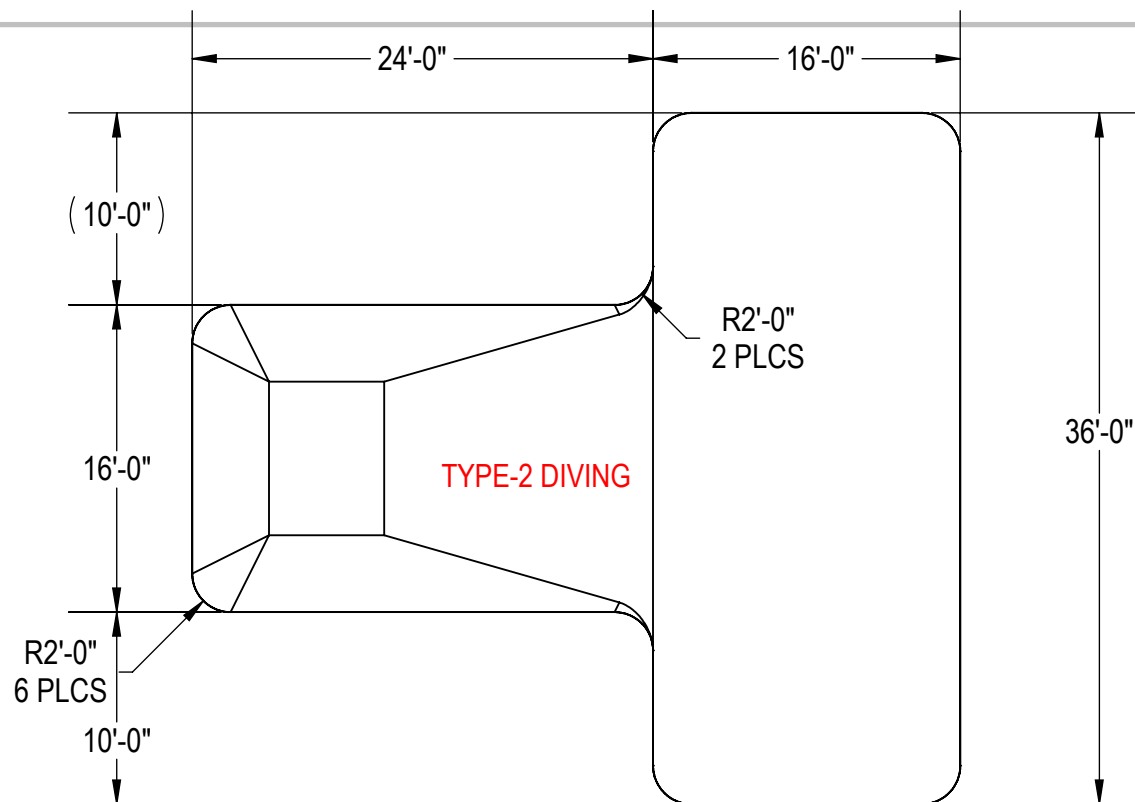
1. THESE ARE FINISHED DIMENSIONS READY FOR THE LINER.
2. DIMENSIONS ARE FROM INSIDE POOL PANELS.
3. ROPE AND FLOAT ASSEMBLY SHOULD BE INSTALLED IN ACCORDANCE WITH CURRENT ANSI/ASPS/ICC REGULATIONS
4. HYDRA LINER TRACK FOR STEPS IS INSTALLED WITH THE BARB FACING THE RISER WALL ON THE STEP.

**EXCAVATION NOTES:**

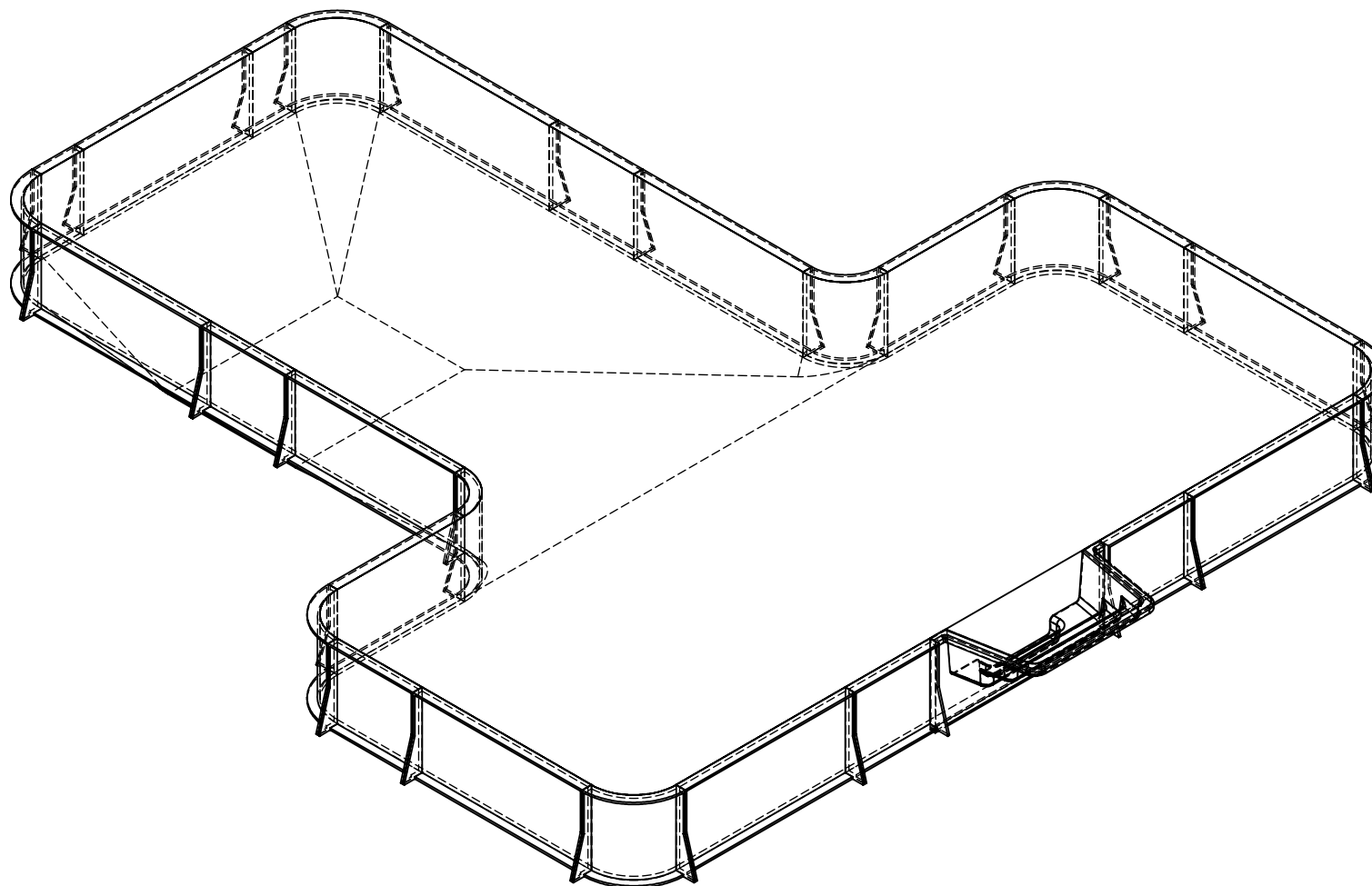
5. ROUGH EXCAVATION SHOULD BE 2" DEEPER IN EACH INSTANCE.
6. SOIL TO HAVE MINIMUM BEARING CAPACITY OF 1500 PSF.
7. LOCATE TOP OF POOL AT LEAST 6" ABOVE THE SURROUNDING LAND ELEVATION.
8. SEE "OVER DIG DETAIL" FOR EXCAVATION AROUND POOL.
9. FILL VOIDS UNDER BASE OF PANELS AND TAMP WELL.
10. BACK FILL WITH NON-EXPANSIVE MATERIAL.
11. FOLLOW ALL CURRENT ANSI / ASPS / ICC GUIDELINES FOR RESIDENTIAL POOLS

**IMPORTANT NOTES:**

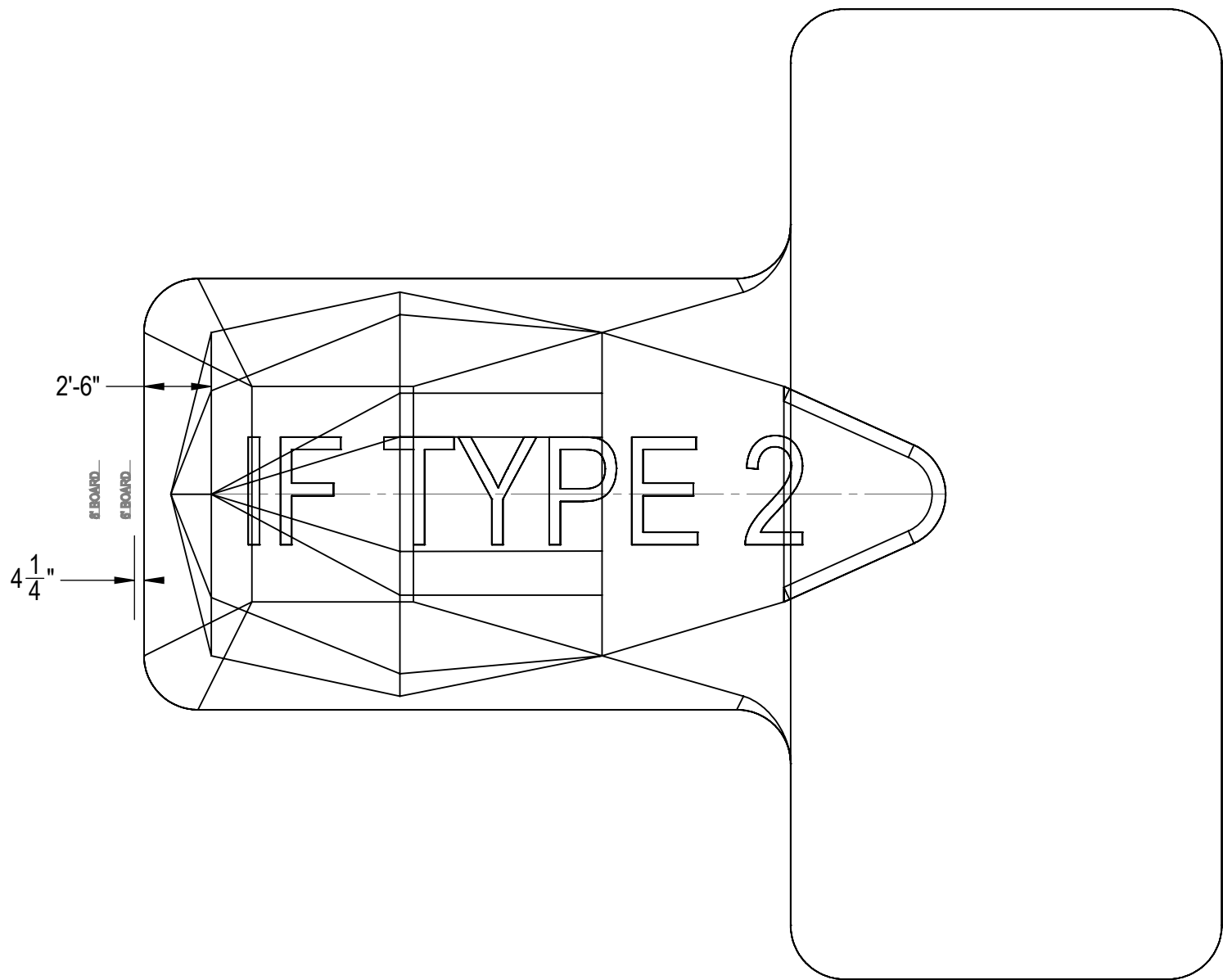
THIS DOCUMENT IS FOR ILLUSTRATIVE PURPOSES ONLY. THE DEALER OR CONTRACTOR WHO SELLS OR INSTALLS YOUR POOL IS AN INDEPENDENT CONTRACTOR AND IS NOT AN AGENT OF THE MANUFACTURER. THE CONSTRUCTION METHODS ILLUSTRATED HERE ARE SUGGESTIONS AND APPLY ONLY TO NORMAL GROUND CONDITIONS. THERE MAY BE ADDITIONAL PRECAUTIONS AND/OR METHODS OF CONSTRUCTION. PROPER INSTALLATION IS THE RESPONSIBILITY OF THE DEALER/BUILDER/CONTRACTOR.



<b>ENGINEERING DRAWING NUMBER:</b> <b>00042400</b>	<b>WEIGHT:</b> 254837.900 lbs <b>VOLUME:</b> 7053890.781 Inch <sup>3</sup> <b>COLOR:</b> NA <b>HEAT TREAT:</b> NA <b>FINISH:</b> NA <b>TEXTURE:</b> NA	<b>UNLESS OTHERWISE SPECIFIED</b> DIMENSIONS ARE IN INCHES TOLERANCES DECIMALS: X ± .1 XX ± .01 XXX ± .001 XXXX ± .0005 ANGULAR: X ± 0.5 THIRD ANGLE PROJECTION	<b>DESIGNED BY:</b> BUMPHREY <b>DETAILED BY:</b> BUMPHREY <b>LAST REVISED BY:</b> rcolboch <b>MATERIAL:</b> Material <not specified>	<b>CREATION DATE:</b> 03/24/17 <b>DETAILED DATE:</b> 01/08/18 <b>LAST REVISED DATE:</b> 04/07/22	<b>HYDRA POOLS</b> <b>TITLE:</b> LAYOUT, 16' X 40' X 36', TEE, 2" RADIUS, 8" DEEP, HS110N, 3-1084, 4-INLET, 700 SERIES
	<b>PART NUMBER:</b> <b>00042400</b>				<b>SCALE:</b> 1:192 <b>SHEET:</b> 2 OF 4
	<b>SIZE:</b> <b>A</b>				
	<b>REV. LEVEL:</b> A-REV. DATE: JULY 29, 2015-DOCUMENT ID: CF7308, ANSI A-LANDSCAPE				
	C:\PDM2020\Hydra Pools\Layouts, Pool, 18 Gauge\00042400				



ENGINEERING DRAWING NUMBER: <b>00042400</b>	WEIGHT: 373051.5 lbs	<b>UNLESS OTHERWISE SPECIFIED</b> DIMENSIONS ARE IN INCHES TOLERANCES DECIMALS: X ± .1 XX ± .01 XXX ± .001 XXXX ± .0005  ANGULAR: X ± 0.5 THIRD ANGLE PROJECTION 	DESIGNED BY: <b>BUMPHREY</b>	CREATION DATE: <b>03/24/17</b>	<b>HYDRA POOLS</b>	
	VOLUME: Inch³		DETAILED BY: <b>BUMPHREY</b>	DETAILED DATE: <b>01/08/18</b>		
	COLOR:		LAST REVISED BY: <b>rcolboch</b>	LAST REVISED DATE: <b>04/07/22</b>	TITLE: LAYOUT, 16' X 40' X 36', TEE, 2' RADIUS, 8" DEEP, HS110N, 3-1084, 4-INLET, 700 SERIES	
	HEAT TREAT:		MATERIAL:			
	FINISH: TEXTURE:				PART NUMBER:	
					<b>00042400</b>	SCALE: 1:192 SHEET: 3 OF 4
						SIZE: <b>A</b>



ENGINEERING DRAWING NUMBER: <b>00042400</b>	WEIGHT: 373051.5 lbs	<b>UNLESS OTHERWISE SPECIFIED</b> DIMENSIONS ARE IN INCHES TOLERANCES DECIMALS: X ± .1 XX ± .01 XXX ± .001 XXXX ± .0005  ANGULAR: X ± 0.5 THIRD ANGLE PROJECTION 	DESIGNED BY: <b>BUMPHREY</b>	CREATION DATE: <b>03/24/17</b>	<b>HYDRA POOLS</b>	
	VOLUME: Inch³		DETAILED BY: <b>BUMPHREY</b>	DETAILED DATE: <b>01/08/18</b>		
	COLOR:		LAST REVISED BY: <b>rcolboch</b>	LAST REVISED DATE: <b>04/07/22</b>	TITLE: LAYOUT, 16' X 40' X 36', TEE, 2' RADIUS, 8' DEEP, HS110N, 3-1084, 4-INLET, 700 SERIES	
	HEAT TREAT:		MATERIAL:			
	FINISH:				PART NUMBER: <b>00042400</b>	
	TEXTURE:					
					SCALE: 1:192 SHEET: 4 OF 4	SIZE: <b>A</b>