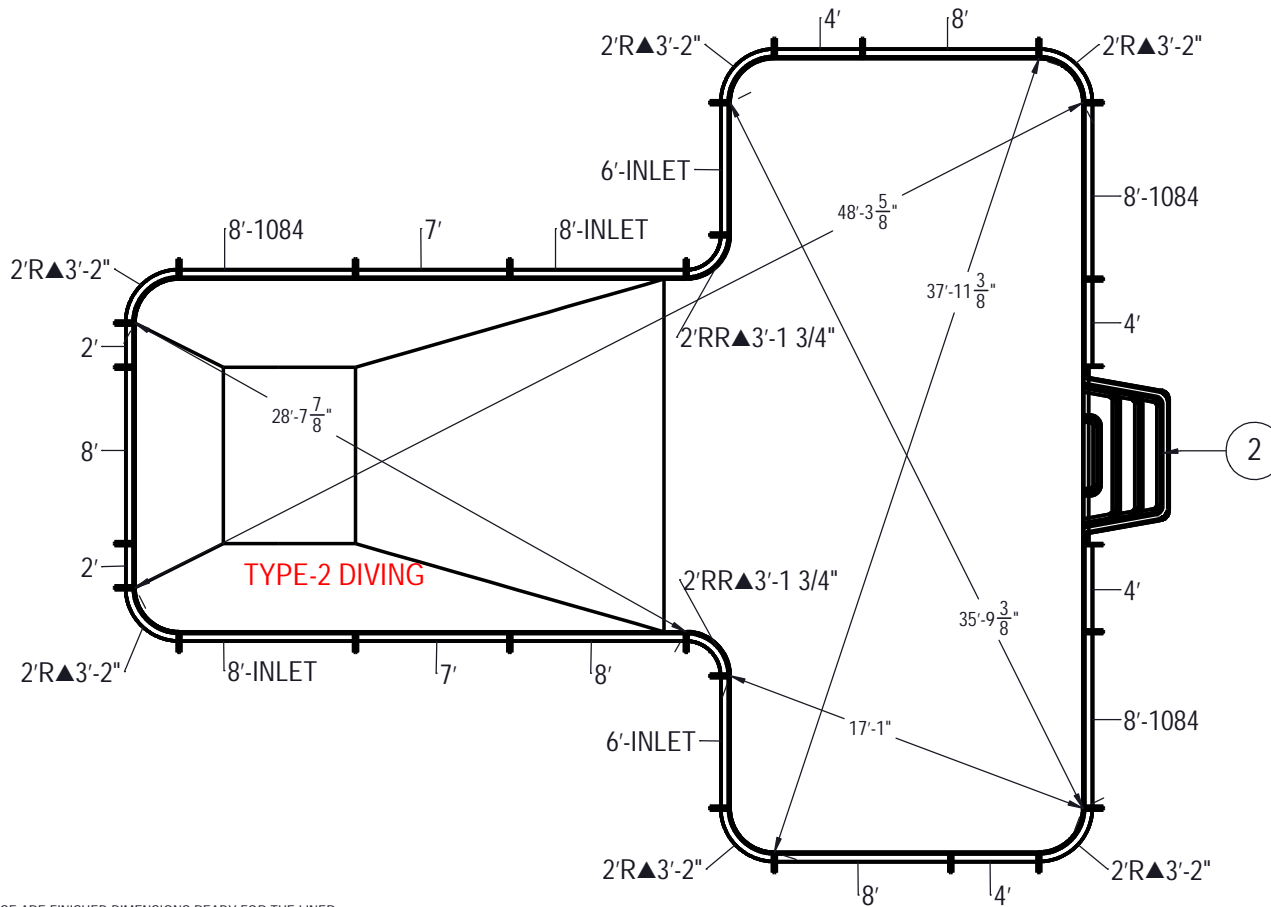


REVISION HISTORY				
REV.	DESCRIPTION	DATE	ECO	BY
A	RELEASED FOR QUOTE	4/7/2022		RLUPO

REVISION NUMBER

MADE FROM

CHECK IN DATE TIME: Thursday April 07, 2022 11:48:36 AM



#### NOTES:

1. THESE ARE FINISHED DIMENSIONS READY FOR THE LINER.
2. DIMENSIONS ARE FROM INSIDE POOL PANELS.
3. ROPE AND FLOAT ASSEMBLY SHOULD BE INSTALLED IN ACCORDANCE WITH CURRENT ANSI/ASPS/ICC REGULATIONS
4. HYDRA LINER TRACK FOR STEPS IS INSTALLED WITH THE BARB FACING THE RISER WALL ON THE STEP.

#### EXCAVATION NOTES:

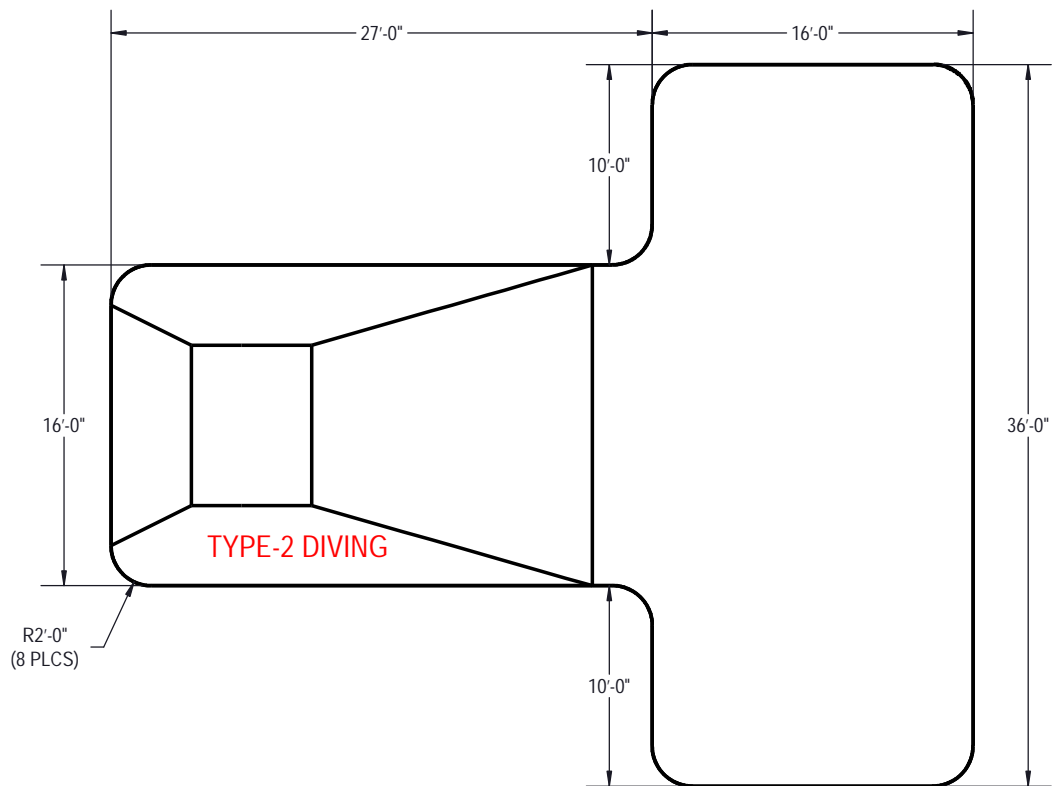
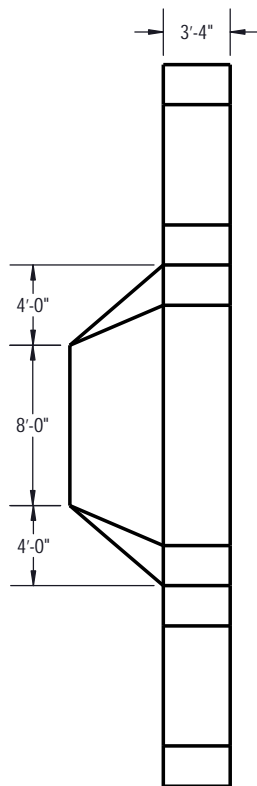
5. ROUGH EXCAVATION SHOULD BE 2" DEEPER IN EACH INSTANCE.
6. SOIL TO HAVE MINIMUM BEARING CAPACITY OF 1500 PSF.
7. LOCATE TOP OF POOL AT LEAST 6" ABOVE THE SURROUNDING LAND ELEVATION.
8. SEE "OVER DIG DETAIL", IN INSTALLATION MANUAL, FOR EXCAVATION AROUND POOL.
9. FILL VOIDS UNDER BASE OF PANELS AND TAMP WELL.
10. BACK FILL WITH NON-EXPANSIVE MATERIAL.
11. FOLLOW ALL CURRENT ANSI / APSP / ICC GUIDELINES FOR RESIDENTIAL POOLS

#### IMPORTANT NOTES:

THIS DOCUMENT IS FOR ILLUSTRATIVE PURPOSES ONLY. THE DEALER OR CONTRACTOR WHO SELLS OR INSTALLS YOUR POOL IS AN INDEPENDENT CONTRACTOR AND IS NOT AN AGENT OF THE MANUFACTURER. THE CONSTRUCTION METHODS ILLUSTRATED HERE ARE SUGGESTIONS AND APPLY ONLY TO NORMAL GROUND CONDITIONS. THERE MAY BE ADDITIONAL PRECAUTIONS AND/OR METHODS OF CONSTRUCTION. PROPER INSTALLATION IS THE RESPONSIBILITY OF THE DEALER/BUILDER/CONTRACTOR.

ITEM	FILE NAME	DESCRIPTION	CUSTOMER DRAWING #	VENDOR PART #	QTY.
1	BOLT, PACK	BOLT, FLANGE, 3/8-16 X 1", PACK (50)	HPST1916	HPST1916	11
2	HS110N	STEP, 8", TWIN SEAT, 4" TREAD	HS110N	HS110N	1
3	PANEL, RADIUS	PANEL, 2" RADIUS, 3'-2" LONG, 700 SERIES	HPSE2R	00002451	6
4	PANEL, RR	PANEL, 2" REVERSE RADIUS, 3'-1 3/4" LONG, 700 SERIES	HPSE2RR	00037303	2
5	PANEL, STRAIGHT	PANEL, 2" LONG, 700 SERIES	HPSE102P	00005483	2
6	PANEL, STRAIGHT	PANEL, 4" LONG, 700 SERIES	HPSE104P	00002723	4
7	PANEL, STRAIGHT	PANEL, 8" LONG, INLET, 700 SERIES	HPSE108I	00004969	2
8	PANEL, STRAIGHT	PANEL, 6" LONG, INLET, 700 SERIES	HPSE106I	00006322	2
9	PANEL, STRAIGHT	PANEL, 8" LONG, 700 SERIES	HPSE108P	00004961	4
10	PANEL, STRAIGHT	PANEL, 8" LONG, 1084, 700 SERIES	HPSE10884	00004966	3
11	PANEL, STRAIGHT	PANEL, 7" LONG, 700 SERIES	HPSE107P	00006045	2
12	SBRACE	BRACE, FOLD OVER WITH TURNBUCKLE, STEEL, HPSFOB	HPSFOB	HPSFOB	28
13	STAKE	STAKE, 14 GA	HPSSTAKE	00003484	28

ENGINEERING DRAWING NUMBER 00042397	WEIGHT: lbs	UNLESS OTHERWISE SPECIFIED DIMENSIONS ARE IN INCHES TOLERANCES DECIMALS: X ± .1 XX ± .01 XXX ± .001 XXXX ± .0005  ANGULAR: X ± 0.5 THIRD ANGLE PROJECTION	DESIGNED BY: RLUPO	CREATION DATE: 5/14/2013	ATLAS STEEL  TITLE: LAYOUT, 16' X 43' X 36', TEE, 2' RADIUS, 8' DEEP, HS110N, 4- INLET, 3- 1084, 700 SERIES  PART NUMBER:  00042397
	VOLUME: Inch <sup>3</sup>		DETAILED BY: RLUPO	DETAILED DATE: 4/7/2022	
	COLOR:		LAST REVISED BY: rlupo	LAST REVISED DATE: 4/7/2022	
	HEAT TREAT:		MATERIAL:		
	FINISH:				SCALE: 1:60
	TEXTURE:				SHEET: 1 OF 3
					SIZE: A



AREA	PERIMETER	VOLUME
SQ. FT.	FT.	U.S. GALLONS
1004.58	151.13	31709.52

#### NOTES:

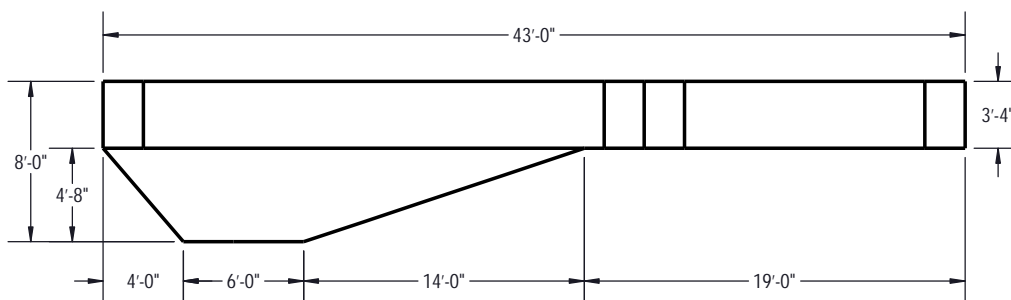
- THESE ARE FINISHED DIMENSIONS READY FOR THE LINER.
- DIMENSIONS ARE FROM INSIDE POOL PANELS.
- ROPE AND FLOAT ASSEMBLY SHOULD BE INSTALLED IN ACCORDANCE WITH CURRENT ANSI/APSP/ICC REGULATIONS
- HYDRA LINER TRACK FOR STEPS IS INSTALLED WITH THE BARB FACING THE RISER WALL ON THE STEP.

#### EXCAVATION NOTES:

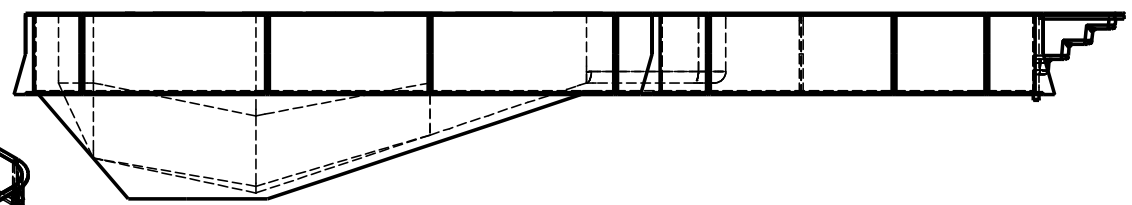
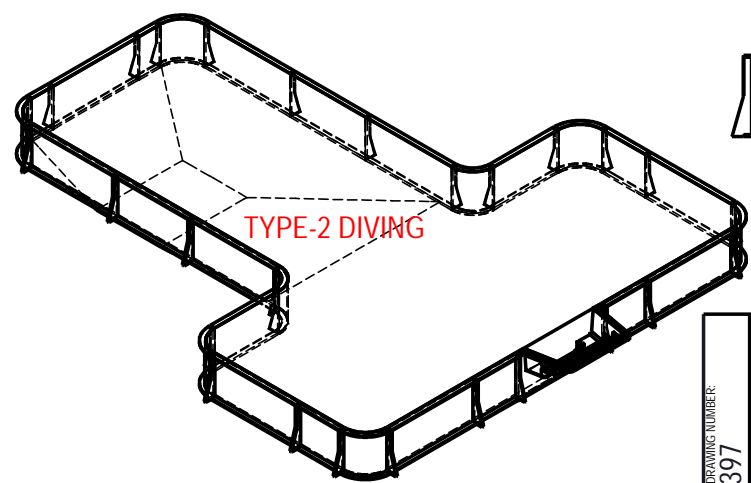
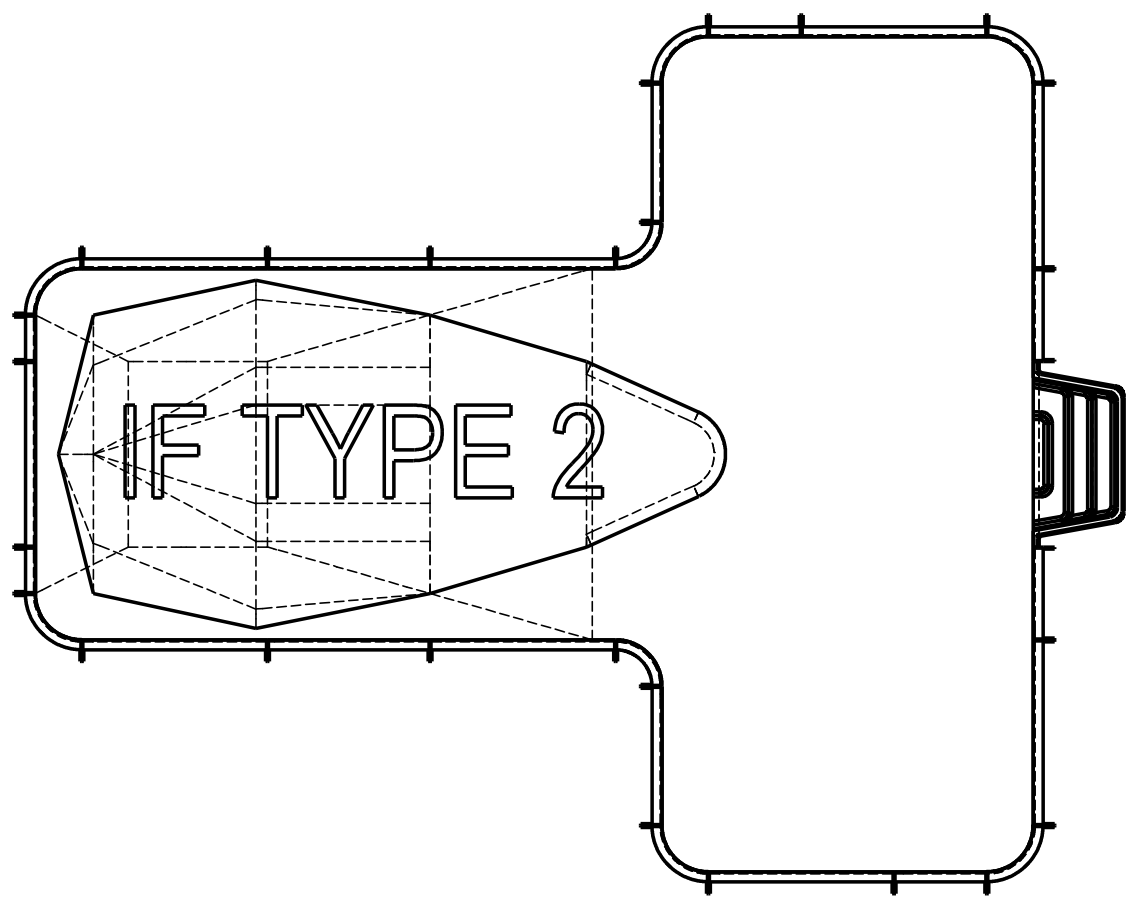
- ROUGH EXCAVATION SHOULD BE 2" DEEPER IN EACH INSTANCE.
- SOIL TO HAVE MINIMUM BEARING CAPACITY OF 1500 PSF.
- LOCATE TOP OF POOL AT LEAST 6" ABOVE THE SURROUNDING LAND ELEVATION.
- SEE "OVER DIG DETAIL", IN INSTALLATION MANUAL, FOR EXCAVATION AROUND POOL.
- FILL VOIDS UNDER BASE OF PANELS AND TAMP WELL.
- BACK FILL WITH NON-EXPANSIVE MATERIAL.
- FOLLOW ALL CURRENT ANSI / APSP / ICC GUIDELINES FOR RESIDENTIAL POOLS

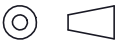
#### IMPORTANT NOTES:

THIS DOCUMENT IS FOR ILLUSTRATIVE PURPOSES ONLY. THE DEALER OR CONTRACTOR WHO SELLS OR INSTALLS YOUR POOL IS AN INDEPENDENT CONTRACTOR AND IS NOT AN AGENT OF THE MANUFACTURER. THE CONSTRUCTION METHODS ILLUSTRATED HERE ARE SUGGESTIONS AND APPLY ONLY TO NORMAL GROUND CONDITIONS. THERE MAY BE ADDITIONAL PRECAUTIONS AND/OR METHODS OF CONSTRUCTION. PROPER INSTALLATION IS THE RESPONSIBILITY OF THE DEALER/BUILDER/CONTRACTOR.



ENGINEERING DRAWING NUMBER: <b>00042397</b>	WEIGHT: lbs	UNLESS OTHERWISE SPECIFIED DIMENSIONS ARE IN INCHES TOLERANCES DECIMALS: X ± .1 XX ± .01 XXX ± .001 XXXX ± .0005 ANGULAR: X ± 0.5 THIRD ANGLE PROJECTION	DESIGNED BY: RLUPO	CREATION DATE: 5/14/2013	ATLAS STEEL  TITLE: LAYOUT, 16' X 43' X 36', TEE, 2' RADIUS, 8" DEEP, HS110N, 4- INLET, 3- 1084, 700 SERIES
	VOLUME: 31709.52 Inch <sup>3</sup>		DETAILED BY: RLUPO	DETAILED DATE: 4/7/2022	
	COLOR:		LAST REVISED BY: rlupo	LAST REVISED DATE: 4/7/2022	
	HEAT TREAT:		MATERIAL:		
	FINISH:				PART NUMBER: <b>00042397</b>
	TEXTURE:				SCALE: 1:72 SHEET: 2 OF 3
					SIZE: <b>A</b>



ENGINEERING DRAWING NUMBER: <b>00042397</b>	WEIGHT: lbs	<b>UNLESS OTHERWISE SPECIFIED</b> DIMENSIONS ARE IN INCHES TOLERANCES DECIMALS: X ± .1 XX ± .01 XXX ± .001 XXXX ± .0005  ANGULAR: X ± 0.5 THIRD ANGLE PROJECTION 	DESIGNED BY: RLUPO	CREATION DATE: 5/14/2013	<b>ATLAS STEEL</b>  TITLE: LAYOUT, 16' X 43' X 36', TEE, 2" RADIUS, 8' DEEP, HS110N, 4- INLET, 3- 1084, 700 SERIES
	VOLUME: Inch³		DETAILED BY: RLUPO	DETAILED DATE: 4/7/2022	
	COLOR:		LAST REVISED BY: rlupo	LAST REVISED DATE: 4/7/2022	
	HEAT TREAT:		MATERIAL:		
	FINISH:				
	TEXTURE:				PART NUMBER: <b>00042397</b>
					SCALE: 1:192 SHEET: 3 OF 3
					SIZE: <b>A</b>