

NOTES:

1. THESE ARE FINISHED DIMENSIONS READY FOR THE LINER.
2. DIMENSIONS ARE FROM INSIDE POOL PANELS.
3. ROPE AND FLOAT ASSEMBLY SHOULD BE INSTALLED IN ACCORDANCE WITH CURRENT ANSI/ASPS/ICC REGULATIONS
4. HYDRA LINER TRACK FOR STEPS IS INSTALLED WITH THE BARB FACING THE RISER WALL ON THE STEP.


EXCAVATION NOTES:

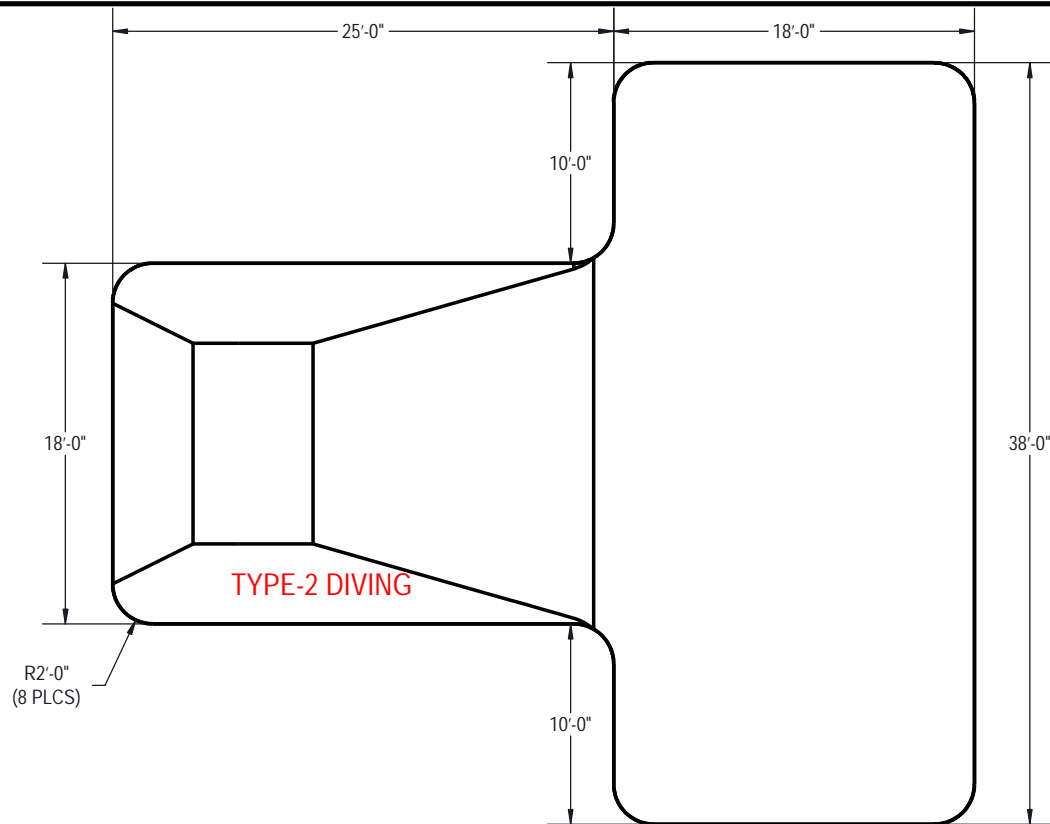
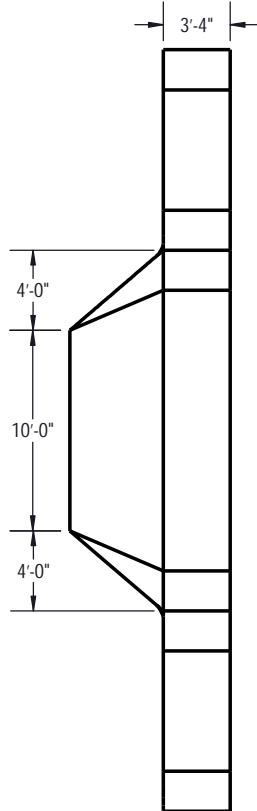
5. ROUGH EXCAVATION SHOULD BE 2" DEEPER IN EACH INSTANCE.
6. SOIL TO HAVE MINIMUM BEARING CAPACITY OF 1500 PSF.
7. LOCATE TOP OF POOL AT LEAST 6" ABOVE THE SURROUNDING LAND ELEVATION.
8. SEE "OVER DIG DETAIL", IN INSTALLATION MANUAL, FOR EXCAVATION AROUND POOL.
9. FILL VOIDS UNDER BASE OF PANELS AND TAMP WELL.
10. BACK FILL WITH NON-EXPANSIVE MATERIAL.
11. FOLLOW ALL CURRENT ANSI / APS / ICC GUIDELINES FOR RESIDENTIAL POOLS

IMPORTANT NOTES:

THIS DOCUMENT IS FOR ILLUSTRATIVE PURPOSES ONLY. THE DEALER OR CONTRACTOR WHO SELLS OR INSTALLS YOUR POOL IS AN INDEPENDENT CONTRACTOR AND IS NOT AN AGENT OF THE MANUFACTURER. THE CONSTRUCTION METHODS ILLUSTRATED HERE ARE SUGGESTIONS AND APPLY ONLY TO NORMAL GROUND CONDITIONS. THERE MAY BE ADDITIONAL PRECAUTIONS AND/OR METHODS OF CONSTRUCTION. PROPER INSTALLATION IS THE RESPONSIBILITY OF THE DEALER/BUILDER/CONTRACTOR.

ITEM	FILE NAME	DESCRIPTION	CUSTOMER DRAWING #	VENDOR PART #	QTY
1	BOLT, PACK	BOLT, FLANGE, 3/8-16 X 1" PACK (50)	HPS1916	HPS1916	11
2	HST10N	STEP, 8" TWIN SEAT, 4 TREAD	HST10N	HST10N	1
3	PANEL, RADIUS	PANEL, 2 RADIUS, 3-2" LONG, 700 SERIES	HPSE2R	00002451	6
4	PANEL, RR	PANEL, 2 REVERSE, 3-1 3/4" LONG, 700 SERIES	HPSE2RR	00037303	2
5	PANEL, STRAIGHT	PANEL, 3" LONG, 700 SERIES	HPSE103P	00002661	2
6	PANEL, STRAIGHT	PANEL, 6" LONG, 700 SERIES	HPSE106P	00002731	2
7	PANEL, STRAIGHT	PANEL, 8" LONG, INLET, 700 SERIES	HPSE108I	00004969	2
8	PANEL, STRAIGHT	PANEL, 8" LONG, INLET, 700 SERIES	HPSE106I	00006322	2
9	PANEL, STRAIGHT	PANEL, 8" LONG, 700 SERIES	HPSE108P	00004961	4
10	PANEL, STRAIGHT	PANEL, 8" LONG, 1084, 700 SERIES	HPSE108B4	00003966	3
11	PANEL, STRAIGHT	PANEL, 5" LONG, 700 SERIES	HPSE105P	00002732	2
12	BRACE	BRACE, FOLD OVER WITH TURNBUCKLE, STEEL, HPSFOB	HPSFOB	HPSFOB	28
13	STAKE	STAKE, 14 GA	HPSSTAKE	00003484	28

ENGINEERING DRAWING NUMBER: 00042404	WEIGHT:		UNLESS OTHERWISE SPECIFIED DIMENSIONS ARE IN INCHES TOLERANCES DECIMALS: X ± .1 XX ± .01 XXX ± .001 XXXX ± .0005 ANGULAR: X ± 0.5 THIRD ANGLE PROJECTION 	DESIGNED BY:	CREATION DATE:	ATLAS STEEL TITLE: LAYOUT, 18' X 43' X 38', TEE, 2' RADIUS, 8' DEEP, HS110N, 4- INLET, 3- 1084, 700 SERIES PART NUMBER: 00042404
	lbs			RLUPO	5/14/2013	
	VOLUME:			DETAILED BY:	DETAILED DATE:	
	Inch ³			RLUPO	4/7/2022	
	COLOR:			LAST REVISED BY:	LAST REVISED DATE:	
				rlupo	4/7/2022	
	HEAT TREAT:			MATERIAL:		
	FINISH:					
	TEXTURE:					



AREA	PERIMETER	VOLUME
SQ. FT.	FT.	U.S. GALLONS
1130.58	155.13	35901.00

NOTES:

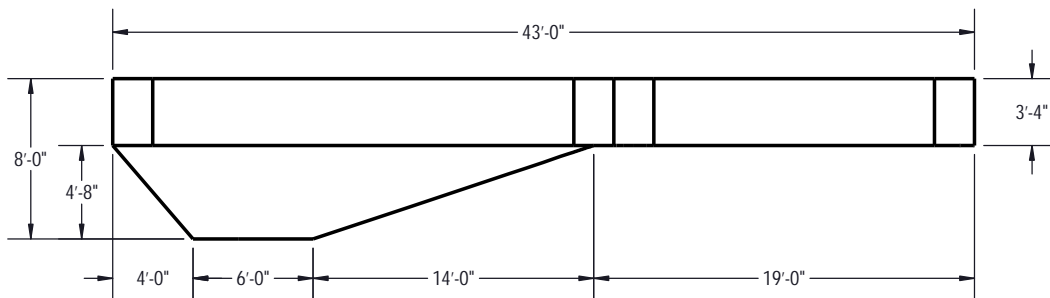
- THESE ARE FINISHED DIMENSIONS READY FOR THE LINER.
- DIMENSIONS ARE FROM INSIDE POOL PANELS.
- ROPE AND FLOAT ASSEMBLY SHOULD BE INSTALLED IN ACCORDANCE WITH CURRENT ANSI/APSP/ICC REGULATIONS
- HYDRA LINER TRACK FOR STEPS IS INSTALLED WITH THE BARB FACING THE RISER WALL ON THE STEP.

EXCAVATION NOTES:

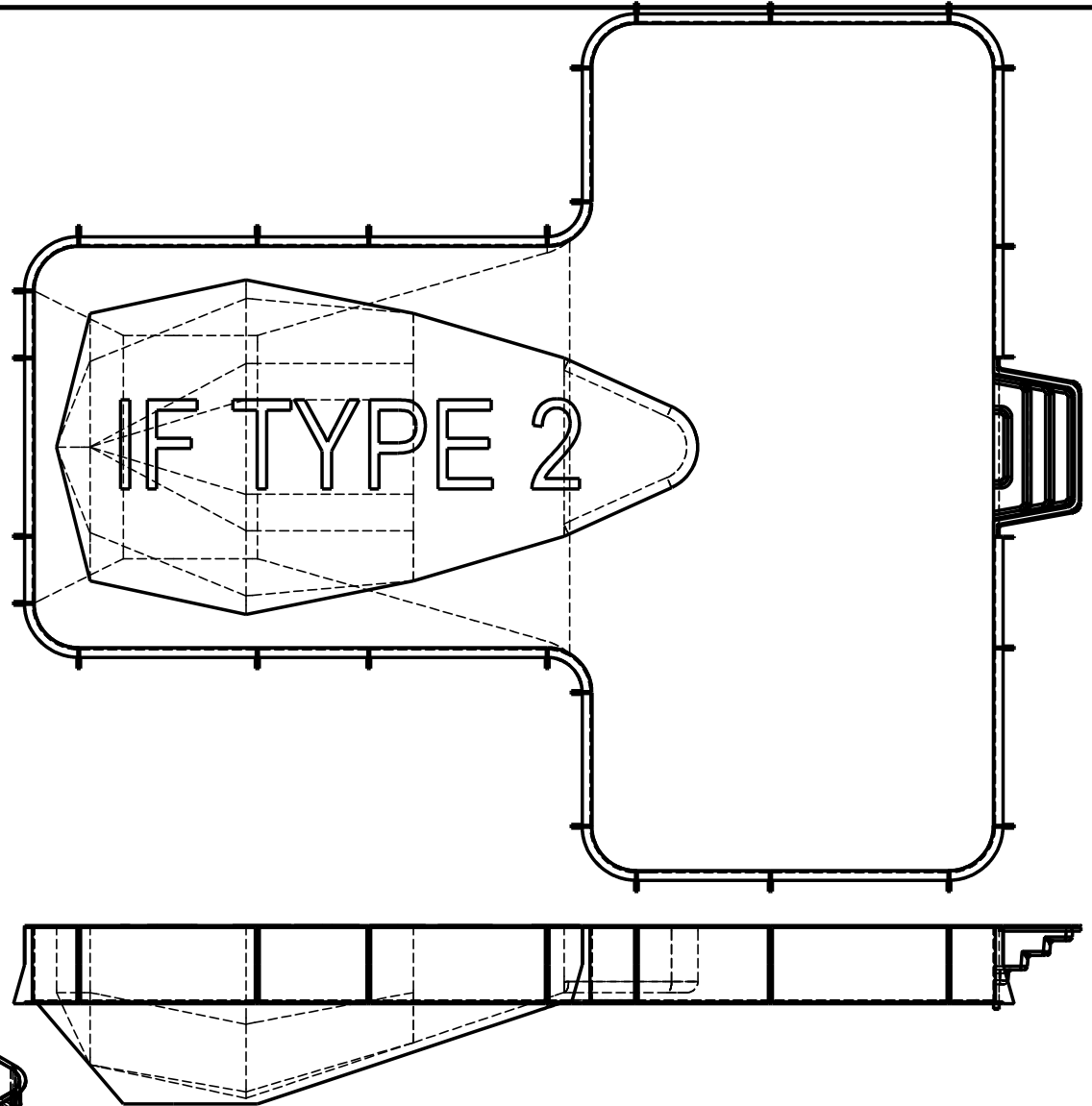
- ROUGH EXCAVATION SHOULD BE 2" DEEPER IN EACH INSTANCE.
- SOIL TO HAVE MINIMUM BEARING CAPACITY OF 1500 PSF.
- LOCATE TOP OF POOL AT LEAST 6" ABOVE THE SURROUNDING LAND ELEVATION.
- SEE "OVER DIG DETAIL", IN INSTALLATION MANUAL, FOR EXCAVATION AROUND POOL.
- FILL VOIDS UNDER BASE OF PANELS AND TAMP WELL.
- BACK FILL WITH NON-EXPANSIVE MATERIAL.
- FOLLOW ALL CURRENT ANSI / APSP / ICC GUIDELINES FOR RESIDENTIAL POOLS

IMPORTANT NOTES:

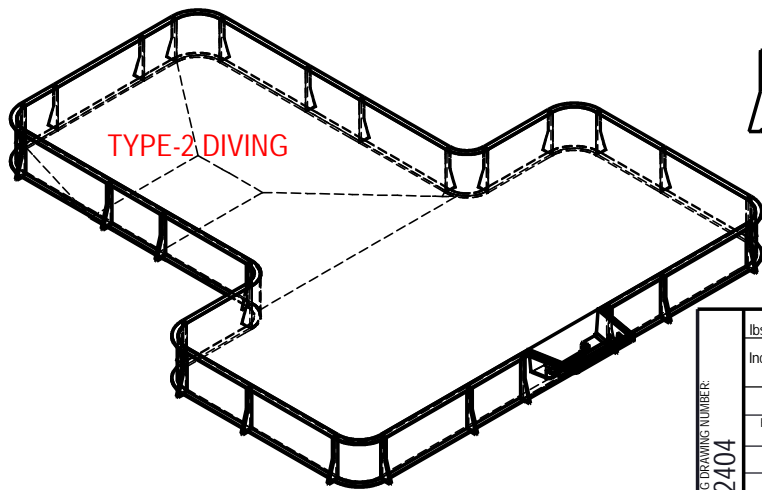
THIS DOCUMENT IS FOR ILLUSTRATIVE PURPOSES ONLY. THE DEALER OR CONTRACTOR WHO SELLS OR INSTALLS YOUR POOL IS AN INDEPENDENT CONTRACTOR AND IS NOT AN AGENT OF THE MANUFACTURER. THE CONSTRUCTION METHODS ILLUSTRATED HERE ARE SUGGESTIONS AND APPLY ONLY TO NORMAL GROUND CONDITIONS. THERE MAY BE ADDITIONAL PRECAUTIONS AND/OR METHODS OF CONSTRUCTION. PROPER INSTALLATION IS THE RESPONSIBILITY OF THE DEALER/BUILDER/CONTRACTOR.



ENGINEERING DRAWING NUMBER 00042404	WEIGHT: lbs	UNLESS OTHERWISE SPECIFIED DIMENSIONS ARE IN INCHES TOLERANCES DECIMALS: X ± .1 XX ± .01 XXX ± .001 XXXX ± .0005 ANGULAR: X ± 0.5 THIRD ANGLE PROJECTION 	DESIGNED BY: RLUPO	CREATION DATE: 5/14/2013	ATLAS STEEL TITLE: LAYOUT, 18' X 43' X 38', TEE, 2' RADIUS, 8' DEEP, HS110N, 4- INLET, 3- 1084, 700 SERIES
	VOLUME: 35901.00 Inch³		DETAILED BY: RLUPO	DETAILED DATE: 4/7/2022	
	COLOR:		LAST REVISED BY: rlupo	LAST REVISED DATE: 4/7/2022	
	HEAT TREAT:		MATERIAL:		
	FINISH:				PART NUMBER: 00042404
	TEXTURE:				SCALE: 1:72 SHEET: 2 OF 3
					SIZE: A



APPROVED NUMBER: 00042404
 MADE FROM: 00042404
 CHECK IN DATE TIME: Thursday, April 10, 2022 2:17:14 PM



ENGINEERING DRAWING NUMBER: 00042404	WEIGHT: lbs	UNLESS OTHERWISE SPECIFIED DIMENSIONS ARE IN INCHES TOLERANCES DECIMALS: X ± .1 XX ± .01 XXX ± .001 XXXX ± .0005 ANGULAR: X ± 0.5 THIRD ANGLE PROJECTION	DESIGNED BY: RLUPO	CREATION DATE: 5/14/2013	ATLAS STEEL TITLE: LAYOUT, 18' X 43' X 38', TEE, 2' RADIUS, 8' DEEP, HS110N, 4- INLET, 3- 1084, 700 SERIES
	VOLUME: Inch³		DETAILED BY: RLUPO	DETAILED DATE: 4/7/2022	
	COLOR:		LAST REVISED BY: rlupo	LAST REVISED DATE: 4/7/2022	
	HEAT TREAT:		MATERIAL:		
	FINISH:				
	TEXTURE:				PART NUMBER: 00042404
					SCALE: 1:192 SHEET: 3 OF 3
					SIZE: A